

JEANNEAU

54



S U M M A R Y

- > SPECIFICATIONS
- > KEY POINTS
- > EXTERIOR
- > INTERIOR
- > SAILS
- > CONSTRUCTION
- > UPHOLSTERY
- > PACKS
- > ELECTRONIC PACKAGES
- > AST OPTION



JEANNEAU
YACHTS



TECHNICAL INFORMATION

Overall length: 16,16 m / 53'
 Hull length: 15,75 m / 51' 8"
 Waterline length: 14,25 m / 46' 9"
 Beam: 4,92 m / 16' 1"

Displacement: 17.164 kg / 37.840 lbs
 Standard keel draft: 2,24 m / 7' 4"
 Shoal keel draft: 1,77 m / 5' 9"

Cabins: 2 / 3 / 4 / 5 / 6
 Berths: 4 / 6 / 8 / 10 (+3)

Engine power: Yanmar 80 Hp / 59 kW
 Yanmar 110 Hp / 81 kW

Fuel capacity:240 l / 63 US gal
 OPT 480 l / 127 US gal
 Water capacity: 724 l / 192 US gal
OPT 964 l / 255 US gal
 Cold capacity:..... 300 l / 79 US gal

Sail area:
 - Standard 111 m² / 1 194 Sq ft
 - Classic 123 m² / 1 323 Sq ft

CE Category: A13 / B15 / C16

Designers: Philippe Briand Yacht Design
 Winch Designs
 Jeanneau Design

VERSIONS • LAYOUTS

Fixed keel version
 Shoal draft version

2 cabins / 2 heads
 3 cabins / 2 heads
 3 cabins / 3 heads
 4 cabins / 4 heads
 5 cabins / 3 heads
 Skipper cabin

WELCOME ONBOARD JEANNEAU 54

Every aspect is innovative and designed to fit the way you live like no other boat in its class. Every detail and feature has been conceived to improve the life onboard and the cruising experience.

EXTERIOR

Arrangements very well thought-out with the aim of favoring ease of navigation:

- Spacious cockpit
- Innovative aft terrace
- Easy and discreet tender manipulation

Association of performance and design:

- Design by Philippe Briand
- Long waterline and the correct positioning of technical equipment ensure an unequalled speed in her class



INTERIOR

A new interior with contemporary design stemming from a long nautical experience

- Design by Andrew Winch
- The noblest materials were carefully selected: high-quality leather, choice of woodwork, stainless equipment, wide choice of fabrics
- Numerous hull ports let plenty of light coming in
- 2 choices of interior styles:



Superior level of comfort:

- VIP interior layout
- Spacious cabins with well-kept finishes, equipped galley, luxurious saloon convertible in relaxing space
- Large choice of layouts

WELCOME TO THE WORLD OF JEANNEAU YACHTS!

DESIGN

- 1 Single rudder: less drag and more sensation. Thanks to a good ratio between beam and length, the hull is perfectly balanced with a single rudder.
- 2 Modern rigging with 109% Genoa and furling mast as standard.
- 3 Hard chinned hull developing good inside volume and sailing stability.
- 4 Long and elegant roof with lot of window surface
- 5 Large hull ports.
- 6 L shaped Keel



DECK



Sunbed integrated into the deck with retractable bimini – option

The longest cockpit in her class, offering a true living space

Storage under cockpit floor

Deep aft lockers

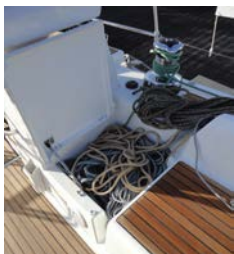


Big lockers for lines

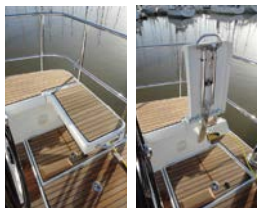
Wide side decks for secure, easy passage forward and lifeline gates

Forward sail storage locker or skipper cabin (1 or 2 people) – option

Deck access to anchor locker offering a supplementary storage and visual control when anchoring



DECK (continued)



Fold down seats – option

Inclined armchairs with cup holders offering an exceptional view and comfort with sun protection of the sprayhood



Large cockpit table with fridge – option

Sliding companionway hatch facilitating passage and storage

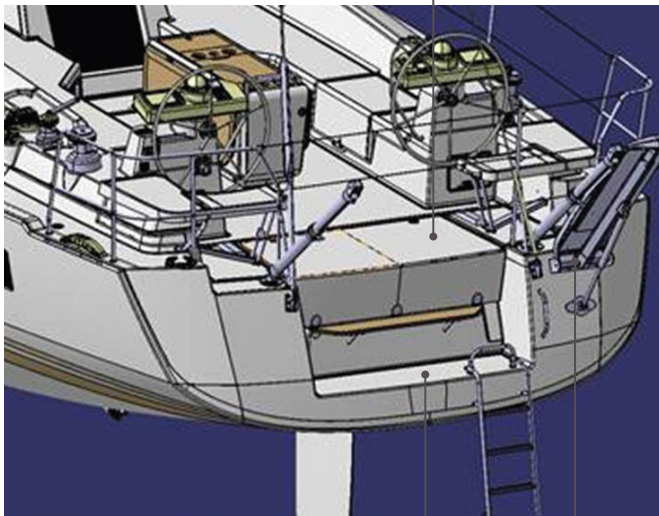
A “safety first” conception ensuring easy deployment of the liferaft at the end of the table without necessity of opening the transom



DECK (continued)

STANDARD TRANSOM

Large cockpit locker



Large transom with foldable ladder

Compatible with davits, passerelle
etc.

TERRACE – option

Innovative aft terrace with integrated sun lounge seats offering comfort and exceptional access to the water thanks to a large inclined bath ladder.



DECK (continued)

Twin steering wheels



Retractable davits allowing launching of a big dinghy without taking inside space. They disappear when are not in use (maximum weight 120kg)



All the winches are located ahead the helm stations in order to ensure easy sail handling and frees up the rest of the cockpit



GPS integrated into a pod

Raised engine throttle lever

INTERIOR LAYOUTS

2 cabins version / 2 heads / aft galley



3 cabins version / 2 heads and utility room



4 cabins version / 4 heads



3 cabins version / 3 heads



5 cabins version / 3 heads



3 cabins version / 3 heads / aft galley



SALOON



Lifting flat screen TV



STANDARD

OPTION



Alpi Teak Oak laminate Natural Oak Dark oak

Optional:
Bench seat
or 2 armchairs

Table on adjustable legs
transformable into coffee
table (option) or berth

Large sofa – seating for 8

CHART TABLE

Large chart table with storage under seat



Rotating GPS mount for viewability

LONG GALLEY TO PORT



Smart using of the space like the microwave oven coming out from the wall on a rail

3-burner stove with thermostatically controlled oven



Stainless steel galley blower with light (option)

Lots of storage for offshore cruising

High-quality countertop

Exceptional storage under the floor, long drawers and spaces for full-sized household appliances, comfort like at home for long-distance cruises



Soft return drawers

LONG GALLEY TO PORT – APPLIANCES

Washing-machine
integrated into furniture



Choice among fridge, dish-washer or
wine cellar



LARGE SALOON – 2 CABIN VERSION

Convivial saloon



Lifting flat screen TV

Lots of storage



2 CABINS VERSION

Lifting flat screen TV + plug



Lots of storage

Wine cellar space

Additional fridge or icemaker location



Sofa, relaxing space in the saloon

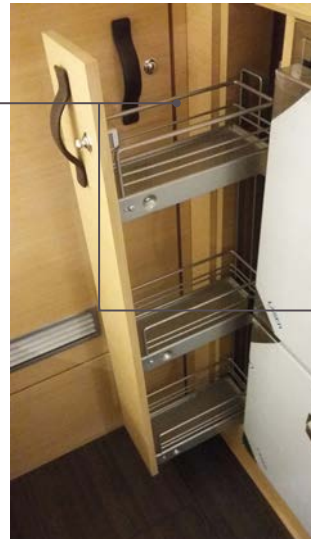


AFT GALLEY

Space dedicated to microwave, optimization of space



Lots of storage for offshore cruising



AFT GALLEY – APPLIANCES

Washing-machine incorporated to the galley



Dish-washer integrated to the galley



Fridge compartment drawer
A second drawer fridge



OWNER FORWARD CABIN

Spacious and comfortable owner cabin with large closets



Hull port favoring a sea view while seated

Night stands to each side of the berth with lamps

USB plugs in the cabins (option)

LED reading lights and wall lamps with lampshade

Upholstered bed skirting

Double bed with PREMIUM mattress (spring mattress in option)

OWNER FORWARD CABIN (continued)



Private head shower with the same flooring as the cabin (no plastic floor) and at the same level (no step)



Large and long wardrobe with lights inside

Soft-return drawers

VIP AFT CABIN – GUESTS

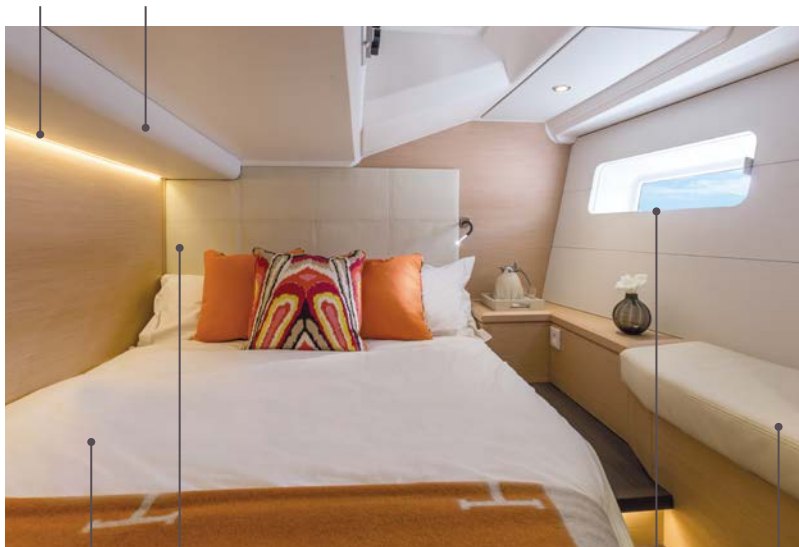
Private bathroom with separated shower cabin keeping WC and sink dry



Large bed : 150 cm x 205 cm with easy access on the side

Indirect LED lighting

Large owner's head above the bed allows to sleep in the "right direction", don't need to crawl to get in our out. Also possible to seat on the bed and read.



Upholstered headboard

View of the sea while seated on your bed thanks to the aft positioning of the large hull ports

Sitting

GUEST AFT CABIN

2 single berths with PREMIUM mattress
transformable in double berth

Indirect LED lighting



Wardrobe

SAIL AND RIG PLANS: Sails for every sailor

Select the sail plan that best fits your style:

- **A very balanced sail plan** for maximum performance while limiting the loads on the sheets.
- **Multiple sail plans** showing the yacht can adapt to every sailing area and program. Everything, from the self-tacking version to the Canoe boom is available.
- Furling mainsail available in Dacron or Mylar, as well as a classic or performance mast option



SPECIFICATIONS

FURLING MAINSAIL :

- Dacron®
- Horizontal panels
- UV-stabilised thread
- Radial reinforcements
- Draft stripe
- Adjustable leech line
- UV protection at sheet attachment
- **Area : 48 m²**



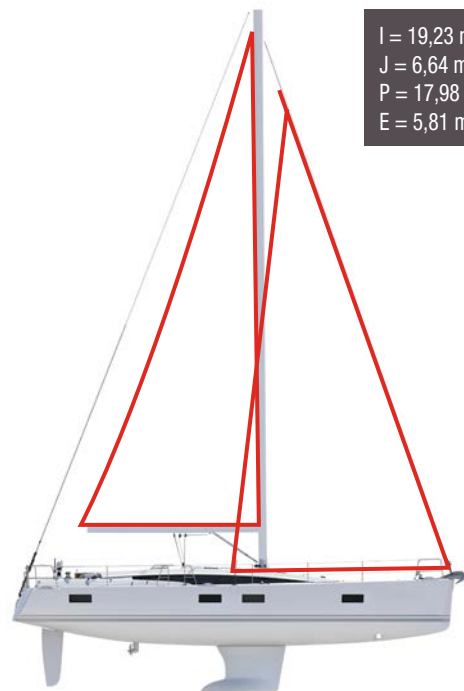
LARGE OVERLAPPING FURLING GENOA (109%) :

- Dacron®
- Horizontal panels
- UV-stabilised thread
- Webbing strap at head
- Bolt-rope for furler
- Anti-UV protection on foot and leech
- Draft stripe
- Webbing strap at tack
- Reefing marks
- Adjustable leech line
- **Area : 63 m²**



ADVANTAGES

- Easy to handle sail plan
- Versatile and balanced sail plan at all sailing angles

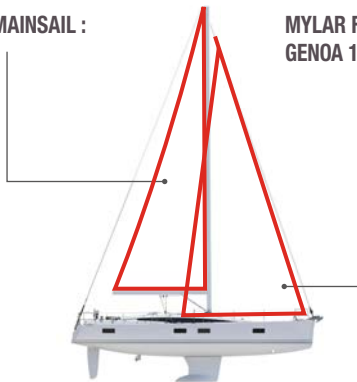


I = 19,23 m
J = 6,64 m
P = 17,98 m
E = 5,81 m

1- FURLING MAST – UPGRADE MYLAR SAILS

MYLAR FURLING MAINSAIL :
48 m²

MYLAR FURLING GENOA 109% : 63 m²



3- SELF-TACKING JIB

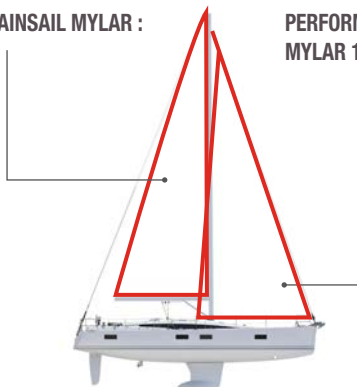
SELF-TACKING JIB:
49 m²



2- PERFORMANCE MAST – MYLAR SAILS

PERFORMANCE MAINSAIL MYLAR :
60 m²

PERFORMANCE GENOA MYLAR 109% : 63 m²



4- CODE 0

AREA : 108 m²



UPGRADE SAILS : MYLAR TAFFETA X-GRID

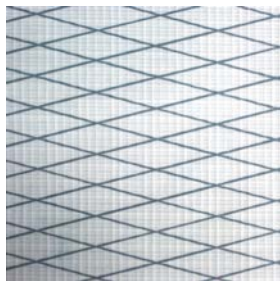
Working in collaboration with Dimension-Polyant and Technique Voiles, Jeanneau has developed a new Mylar Taffeta X-Grid fabric for the Performance range.

The triradial construction of the sail contributes to superior shape holding, but other forces can act on the individual panels. By using a specially-designed X-Grid® of fibres angled at 6° laminated into the fabric, better bias control can be achieved which makes the sail more resistant to deformation and aging.

The performance of these new fabrics provides a more stable sail cloth that is lighter, easier to handle, with better shape control over time.

These new Performance sails are easily recognisable; they include a taffeta laminate that is light grey that gives them a very “hi-tech” look.

- 1 - Protective taffeta
- 2 - Polyester film
- 3 - X-Grid® fibres
- 4 - Polyester scrim



SPECIFICATIONS

FURLING MAINSAIL

Mylar :

- Mylar/taffeta X-Grid fabric in grey colour
- Triradial cut
- UV-stabilised thread
- Radial reinforcements
- Draft stripe
- Adjustable leech line
- UV protection at sheet attachment
- Replaces the standard mainsail
- **Area : 48,2 m²**



SPECIFICATIONS

MYLAR OVERLAPPING FURLING GENOA (109 %) :

- Mylar/taffeta X-Grid fabric in grey colour
- Triradial cut
- UV-stabilised thread
- Webbing strap at head
- Bolt-rope for furler
- Anti-UV protection on foot and leech
- Radial reinforcements
- Draft stripe
- Webbing strap at tack
- Reefing marks
- Adjustable leech and foot lines
- Replaces the standard genoa
- **Area : 60 m²**



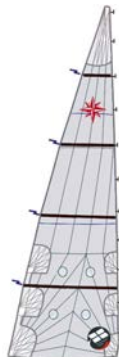
ADVANTAGES

- Sail plan geometry is identical to the standard sail plan providing the same balance, versatility and ease of handling
- High-end sail cloth material means less stretch and better performance
- Tri radial cut ensures better sail shape and improved resistance to wear.
- Balanced sail plan for all sailing angles
- Easy to use in all conditions

SPECIFICATIONS

MYLAR BATTENED MAINSAIL FULL-BATTEN PERFORMANCE:

- Mylar/taffeta X-Grid fabric in grey colour
- Triradial cut
- Stainless steel eyes
- UV-stabilised thread
- Draft stripe
- Radial reinforcements
- Adjustable leech and foot lines
- Loose-footed
- Fibreglass battens
- 2 reef points each with singleline reefing system.
(Third classic reef point)
- Replaces the standard mainsail
- Included in Tall mast option
- Lazy bag included
- **Area : 60 m²**



ADVANTAGES

- High-end sail cloth material means less stretch and better performance
- Tri radial cut ensures better sail shape and improved resistance to wear.

SPECIFICATIONS

MYLAR FURLING GENOA PERFORMANCE 109%:

- Mylar/taffeta X-Grid fabric in grey colour
- Triradial cut
- UV-stabilised thread
- Webbing strap at head
- Bolt-rope for furler
- Anti-UV protection on foot and leech
- Radial reinforcements
- Draft stripe
- Webbing strap at tack
- Reefing marks
- Adjustable leech line
- Replaces the standard genoa
- Included in Tall mast option
- **Area : 63 m²**



SPECIFICATIONS

SELF-TACKING FURLING JIB

- Mylar/taffeta X-Grid fabric in grey colour
- Triradial cut
- UV-stabilised thread
- Webbing strap at head
- Bolt-rope for furler
- Anti-UV protection on foot and leech
- Draft stripe
- Radial reinforcements
- Webbing strap at tack
- Adjustable sheet attachment
- Adjustable leech line
- Replaces the standard genoa
- Requires deck hardware for self-tacking jib
- **Area : 49 m²**



ADVANTAGES

- Hands-free tacking
- Great up-wind performance
- Perfect for short-handed sailing

PERFORMANCE SAILS: MYLAR TAFFETA X-GRID

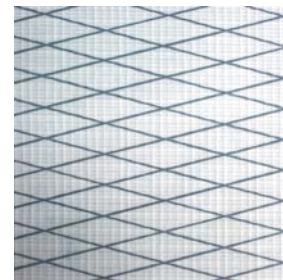
Working in collaboration with Dimension-Polyant and Technique Voiles, Jeanneau has developed a new Mylar Taffeta X-Grid fabric for the Performance range.

The triradial construction of the sail contributes to superior shape holding, but other forces can act on the individual panels. By using a specially-designed X-Grid® of fibres angled at 6° laminated into the fabric, better bias control can be achieved which makes the sail more resistant to deformation and aging.

The performance of these new fabrics provides a more stable sail cloth that is lighter, easier to handle, with better shape control over time.

These new Performance sails are easily recognizable; they include a taffeta laminate that is light grey that gives them a very “hi-tech” look.

- 1 - Protective taffeta
- 2 - Polyester film
- 3 - X-Grid® fibers
- 4 - Polyester scrim



SPECIFICATIONS

CODE 0

Selden continuous line furler :

- Laminate Mylar/Aramid X-Grid fabric in light grey
 - Translucent grey colour
 - Triradial cut
 - Anti twist luff cord
 - UV-stabilised thread
 - Straps for sheet attachment
 - Adjustable leech and foot lines
 - Requires rigging for asymmetrical spinnaker / Code 0
- **Area - furling mast : 108 m²**



ADVANTAGES

- A light wind sail designed for use between 60° and 120°
- Continue to sail when others have given up and turned on the motor
- Continuous line furler allows easy deployment and furling from the cockpit
- Ideal addition to boats with small overlapping jibs and self-tacking jibs



CODE 0: MYLAR ARAMID X-GRID

For the development of the new Code 0 sails on a continuous line furler, Jeanneau selected a sail cloth that is perfectly adapted for use in light airs. Highly resistant, light weight and able to be furled, the Mylar Aramid X-Grid has a light grey finish that is translucent.

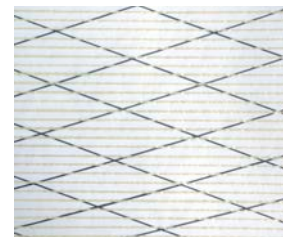
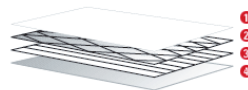
Unidirectional Aramid fibres, vacuum-bagged together between two polyester films, provide an unequalled resistance to weight ratio. This ultra light sail is easy to handle and fills with the slightest puff of wind.

Adding the X-Grid® polyester fibres at a 6° angle provides excellent bias control in all directions and improves sail shaping, as well as, resistance to tearing.

Lastly, a taffeta is added to the external laminate of the sail cloth to protect the sail from ultraviolet light and wear during furling or storage.

The Code 0 sails from Jeanneau integrate these high-performance materials to meet the exacting demands of our owners. In addition to these high-end materials, the look of these sails sets Jeanneau apart.

- 1 - Polyester film
- 2 - X-Grid® fibres
- 3 - Unidirectional Aramid fibres
- 4 - Protective taffeta



PRISMA PROCESS

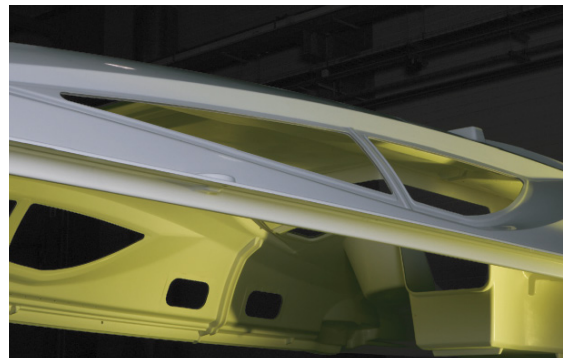


Leader in vacuum bagging technology for the construction of racing boats, JTA developed an resin injection process applicable to the construction of cruising boats. By using advanced engineering, precisely positioned layers of glass fabric and mat and specially developed core materials, Jeanneau is able to mould a deck to exacting tolerances. Jeanneau's leadership in this domain gives it a substantial advantage over its competitors and ensures unequalled quality to the customer.

This 21st century technology allows Jeanneau to manufacture complex fibreglass parts with:

- Perfect finish on both sides (no need for a counter mould)
- Reduced weight (providing the sailboat better stability/performance)
- Increased strength and rigidity of the piece (quality of lay-up)
- Reduction by 90% of VOC emissions (environmentally-friendly)
- Optimum working conditions for the production team (no contact with resins/catalysts)
- High quality parts (precise control of gelcoat, core materials and resin injection)

The deck of the Jeanneau 53 is the largest mass-produced injection fibreglass part in the world.



COUNTER-MOULDING

3rd generation hull structure

Jeanneau has long been known for strong and seaworthy boats. Today the technology of boatbuilding has evolved, but our commitment to this tradition has not wavered. The Jeanneau 3rd Generation Hull Structure combines the latest in fiberglass technology with modern yacht design to deliver a structural reinforcement perfectly adapted to the demands of the offshore sailor.

- ❶ High-load zones cut-out for access to the hull
- ❷ Integrated repair area at aft end of keel
- ❸ Structure is precisely placed in the hull
- ❹ Glued and relaminated to the hull for strength
- ❺ Acts as a support for the floorboards
- ❻ Keel bolts located near vertical members and through counter mould and hull
- ❼ Limber holes at hull level for efficient drainage
- ❽ Counter mould remains below level of floorboards and is not visible



ALPI WOOD

SALES POINTS:

Environmental:

- Ayous (*Triplochiton scleroxylon* - Sterculiacées) trees in managed forests of indigenous hardwoods are selected and cut, with a constant care given towards long term preservation of natural resources.
- Teak and other soft rainforest woods often come from geopolitically sensitive regions and are not managed in a sustainable way.

Quality:

- These ALPI wood panels are substantially more expensive and reliable than standard marine plywood. They are used by top of the line furniture manufacturers, as well as many exclusive super-yacht builders (for example Azimut and Ferretti only use ALPI wood).
- Consistency of finish and colors throughout the boat.
- Elimination of “defects” in wood panels.

Durability:

- Harder finish that is more resistant to humidity
- Better resistance to UV
- Easier repairs as veneer is tinted through and through so clear varnishes can be used



There are four elements of decoration on board that contribute to overall design harmony:

- 1- Saloon seating and seat backs
- 2- Cabin seating
- 3- Bed skirting
- 4- Headboards

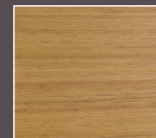


When a fabric or leather is selected, it is applied in these four areas throughout the boat.

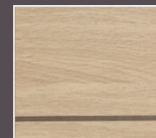
Interior upholstery	PVC IVORY	SEA SAND	STONE GREY	LINEN	LEATHER
	PVC Marlin Ivory	Alcantara Sea Sand	Alcantara Stone Grey	Libeco Souris	
Saloon seating					8 colour choices available (See the selection on the following page)
Cabin seating					
Bed skirting					
Headboards					

INTERIOR AMBIANCES

► STANDARD

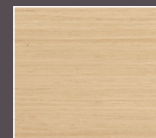


Alpi teak floorboards

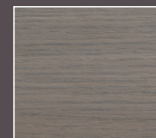


Interior woodwork
Oak laminate

► OPTION



Alpi Natural Oak
floorboards



Interior woodwork
Dark oak

BEDS

► PREMIUM MATTRESS

Ultra-Fresh® antimicrobial, anti-bacterial and hypoallergenic mattress cover

LEATHERETTE WRAP

► DEVON CHOCO LEATHER



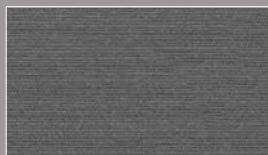


EXTERIOR UPHOLSTERY

SPRAYHOOD PROTECTION BIMINI / LAZY BAG



Sunbrella® Plus Charcoal Grey



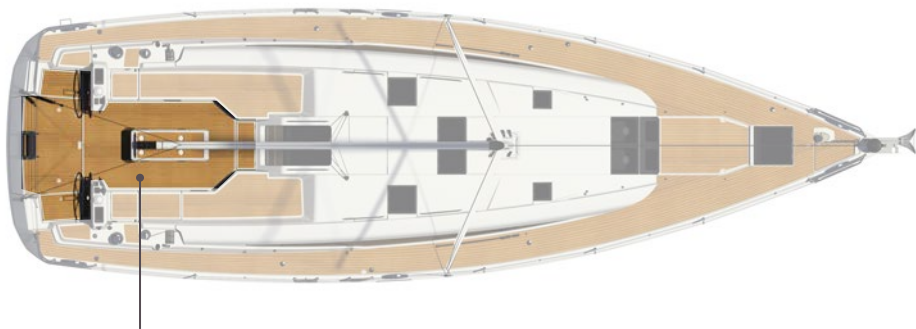
COCKPIT CUSHIONS (BACKRESTS & SEATS)



Sunbrella® Natté Cadet Grey



TERRACE PACK



Terrace teak floor

Teak floor in the rest of the cockpit

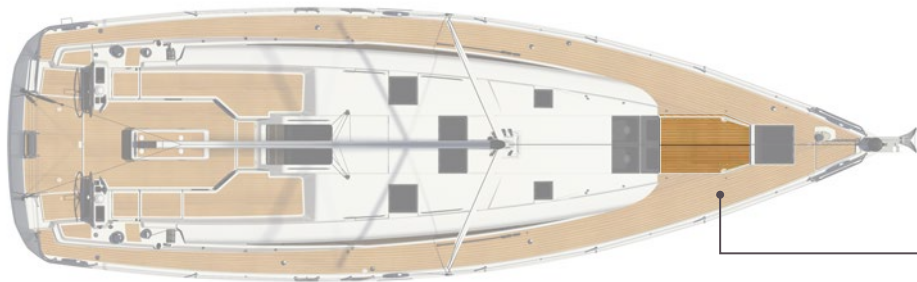
Electric foldable terrace

Wireless remote to open
and close the terrace

Large bathing ladder



FORWARD SUNDECK PACK



Teak flooring in the sunbathing area

Foldable Bimini in Sunbrella
Charcoal Grey

Forward sunbed mattress in Sunbrella
Cadet Grey
Tie-downs for mattress



INDIVIDUAL PACK (choice: Ivory, Alcantara, Devon, Nubuck)

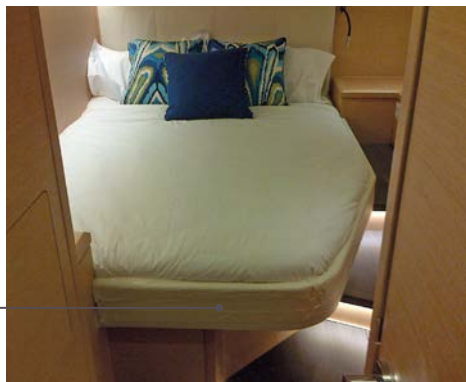
Bed head board in
VIP cabin



Door handle in leather
for forward cabin



Upholstered bed
skirting in VIP cabin



Upholstered sofa
skirting in saloon.
For layouts with aft
galley (DA and LA),
the sofa headband
is included in the
upholstery pack and
not in the individual
pack.



LITHIUM BATTERIES

EPSILON – TECHNOLOGIE LIFEPO4



GREAT AUTONOMY
100% of useable energy



LIGHTWEIGHT!
With equivalent energy:
More than 65% in weight gain
= reduced volume !



MAXIMUM SERVICE LIFE
≈ 5 000 cycles



TOLERANCE TO HIGH TEMPERATURES



OPTIMUM COMFORT
Compatible with powerful
230V AC/DC inverters!
NO NEED TO Compromise!



SUPER-FAST CHARGING
2 hours when under power
1 hour when charging with solar cells
in optimal conditions



PEACE OF MIND
Very low self-discharge;
store your battery safely
for several months

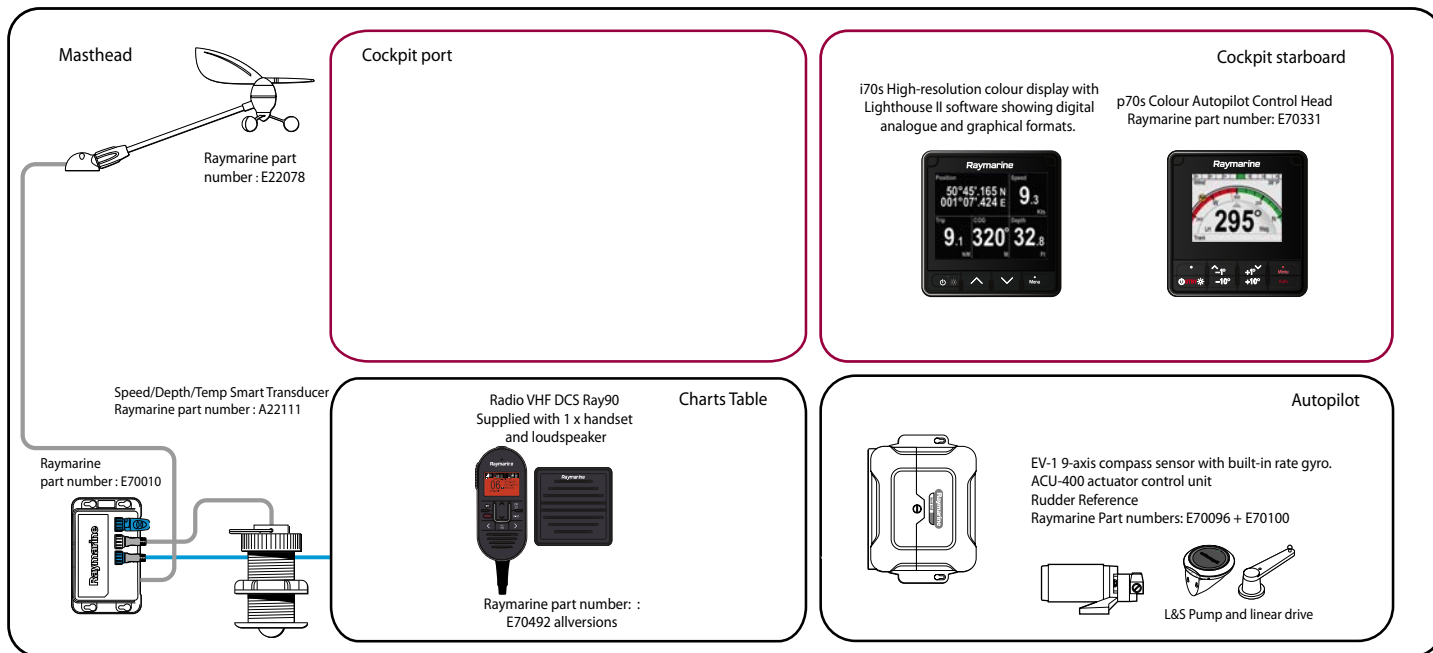
Number of domestic batteries 90Ah Lithium	
Sun Fast 3200	2
Sun Fast 3600	2

Sun Odyssey 349	1
Sun Odyssey 389	1
Sun Odyssey 410	2
Sun Odyssey 419	2
Sun Odyssey 440	2
Sun Odyssey 490	3

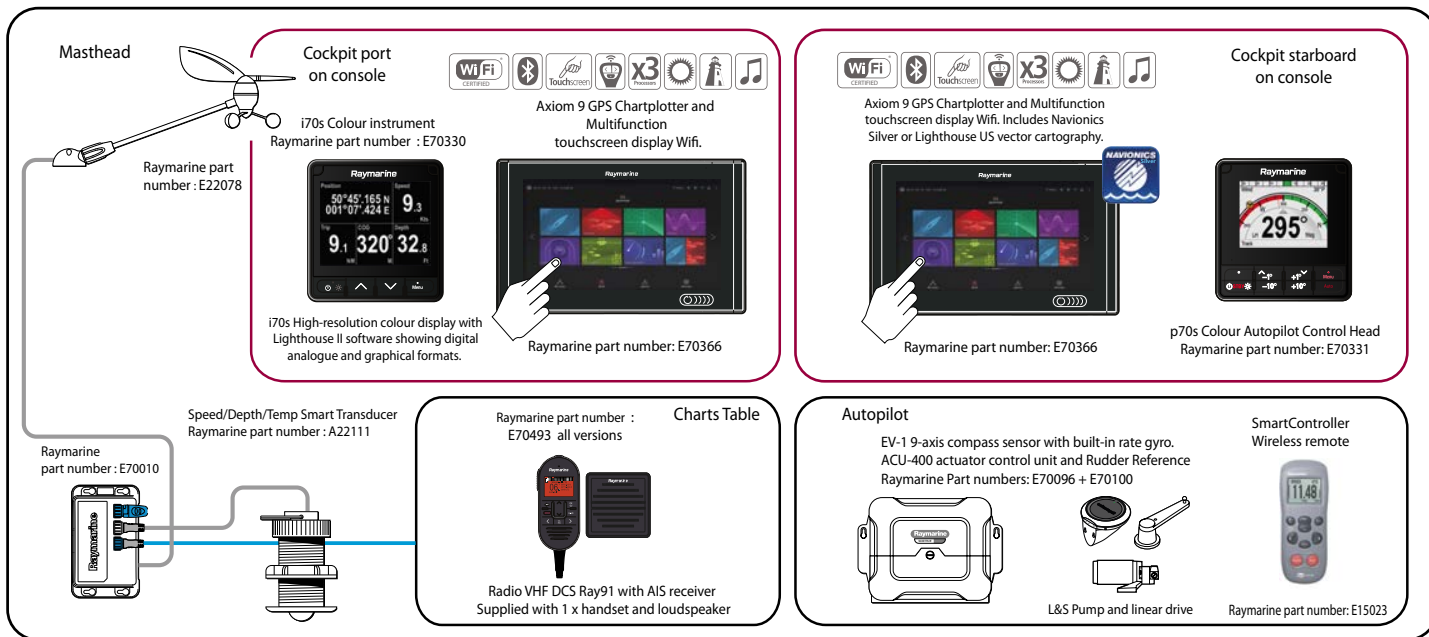
Sun Odyssey 449	2
Sun Odyssey 479	3
Sun Odyssey 519	3

Jeanneau 51	3
Jeanneau 54	3

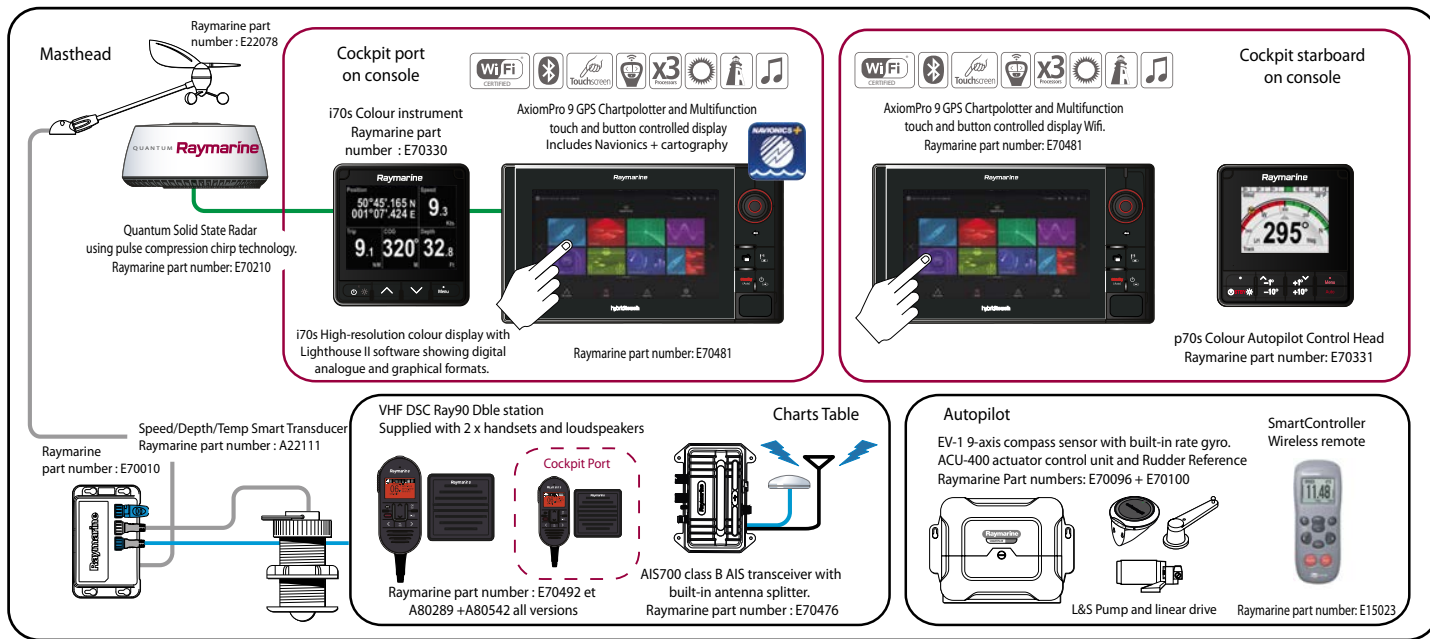
Jeanneau 51-54 Cruising Electronic Pack



Jeanneau 51-54 Offshore Electronic Pack



Jeanneau 51-54 Ocean Electronic Pack



Jeanneau 51-54 **OPTION**

AxiomPro 9 Multifunction Touch and button controlled 9" Display at the chart table
Not compatible with the Cruising Pack



GPS Chartplotter and Multifunction touch and button controlled display Wifi.
Raymarine part number: E70481



OPTION AST (ASSISTED SAIL TRIM)

Jeanneau's exclusive Assisted Sail Trim technology delivers peace of mind and ease of handling, just like having an additional crew member on board. This exclusive Jeanneau Technology, developed in partnership with Harken, the world's leading deck hardware and sailing equipment supplier. This innovative system relies on proven equipment and operates in collaboration with major electronics manufacturers.

CONCEPT

This Jeanneau innovation, co-developed in partnership with Harken, allows the sailor to trim the sails and remotely operate the winches directly from a screen at the helm station.

Designed to ensure comfortable and easy sailing, the Assisted Sail Trim system is ideal for short-handed cruising.

100% user-friendly and intuitive, it brings numerous features to cruising in the same way as the autopilot does.

Cette innovation Jeanneau développée en partenariat avec Harken permet de régler les voiles directement depuis un écran au poste de barre et de contrôler les winchs à distance.

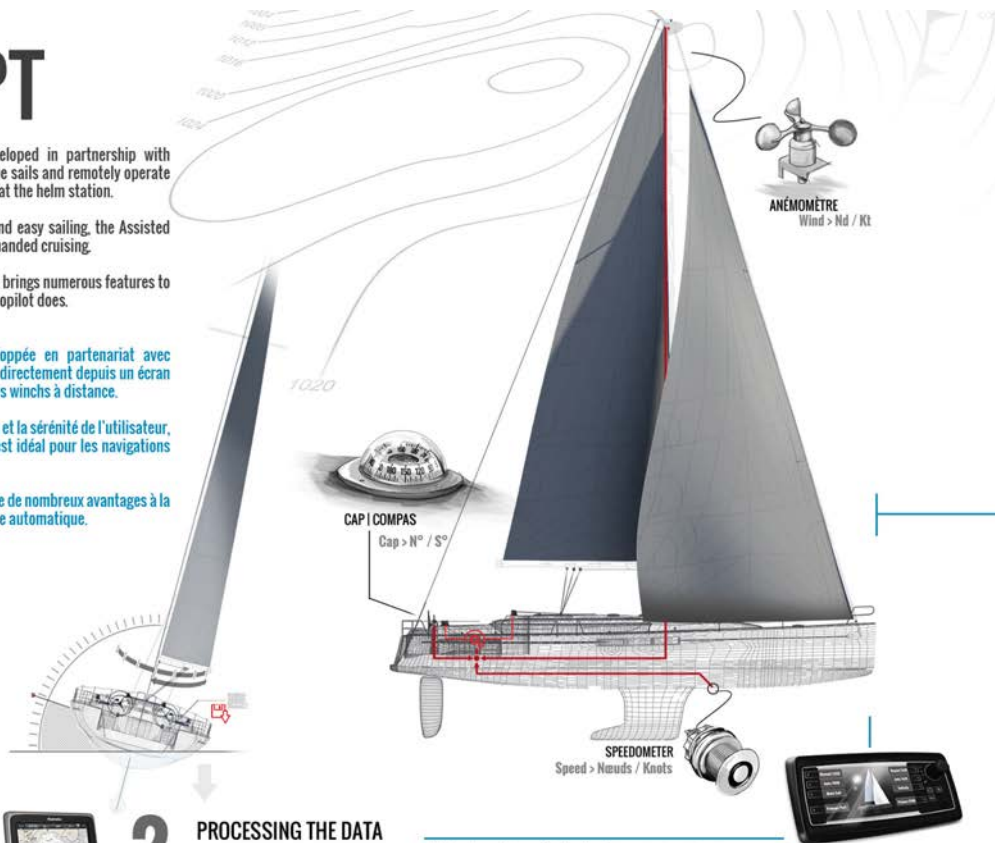
Conçu pour le confort de navigation et la sérénité de l'utilisateur, le système ASSISTED SAIL TRIM est idéal pour les navigations en équipage réduit.

100% convivial et intuitif, il apporte de nombreux avantages à la croisière au même titre que le pilote automatique.

1. INITIAL TRIMMING RÉGLAGE INITIAL

The system relies on a correct initial trimming of the sails to the desired heading. This trimming can be adjusted directly from the helm station.

Le système s'appuie sur un réglage initial des voiles selon le cap. Ce réglage peut s'effectuer directement du poste de barre.



2. PROCESSING THE DATA LECTURE DES PARAMETRES

Navigation data (wind, heading, speed...) is collected in real time by the onboard electronics.

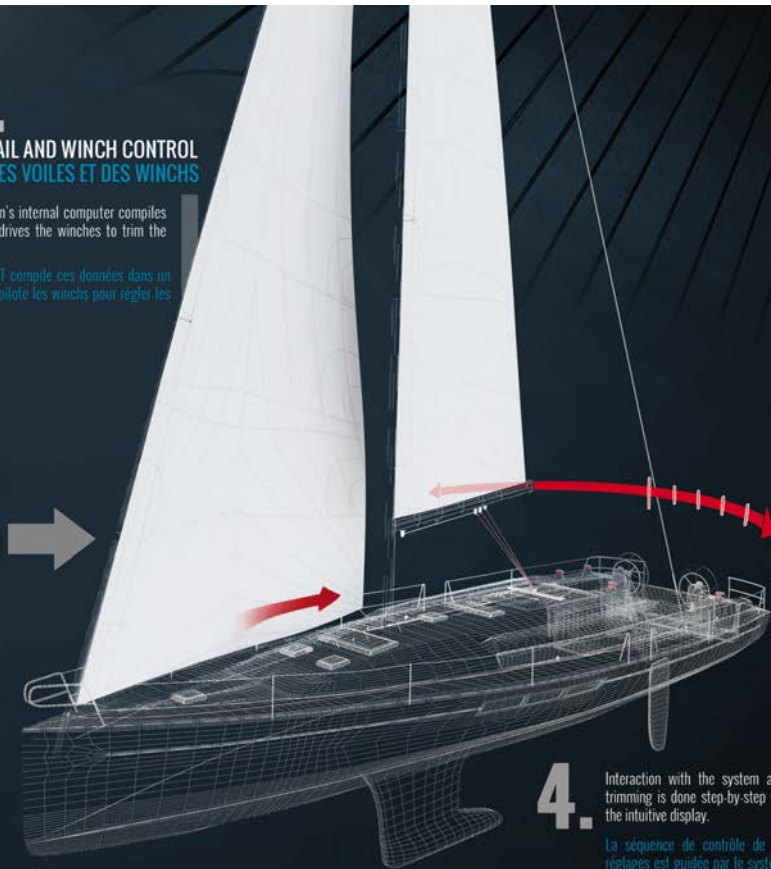
Les données de navigation (vent, cap, vitesse...) sont captées en temps réel par la centrale électronique.



3. SAIL AND WINCH CONTROL GESTION DES VOILES ET DES WINCHS

The AST system's internal computer compiles this data and drives the winches to trim the sails.

Le système AST compile ces données dans un calculateur et pilote les winchs pour régler les voiles.



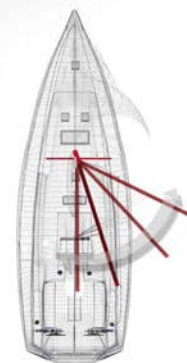
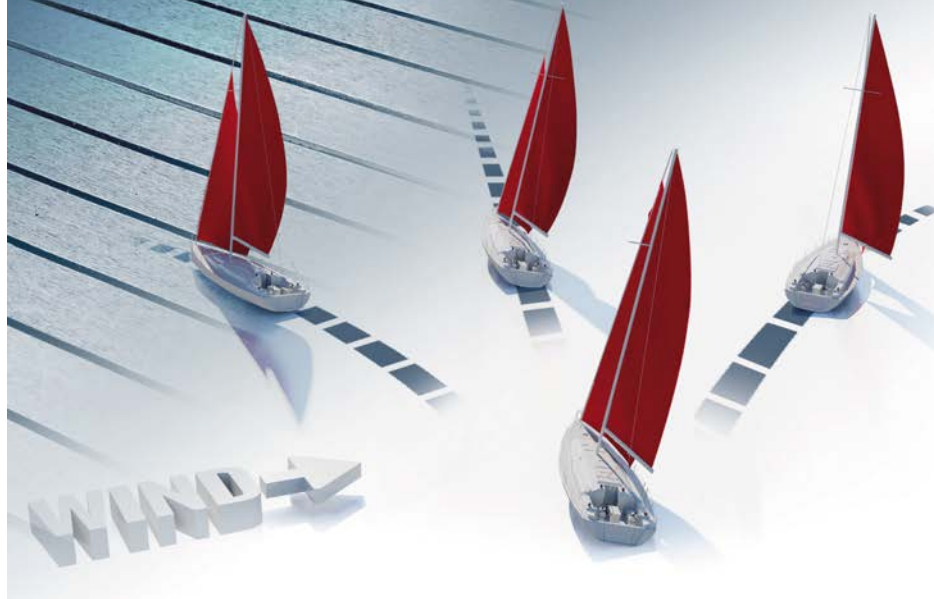
4. Interaction with the system and trimming is done step-by-step via the intuitive display.

La séquence de contrôle de ces réglages est guidée par le système via un écran très intuitif.

AUTO TRIM

REGULATEUR

1.



As the heading changes, the sails are adjusted automatically to maintain proper trim.

En fonction des variations de cap, les voiles se réglent automatiquement pour conserver un bon réglage.

TRIM THE SAILS
REGLEZ LES VOILES

2.



ACTIVATE AUTO TRIM
ACTIVER L'AUTO TRIM

3.



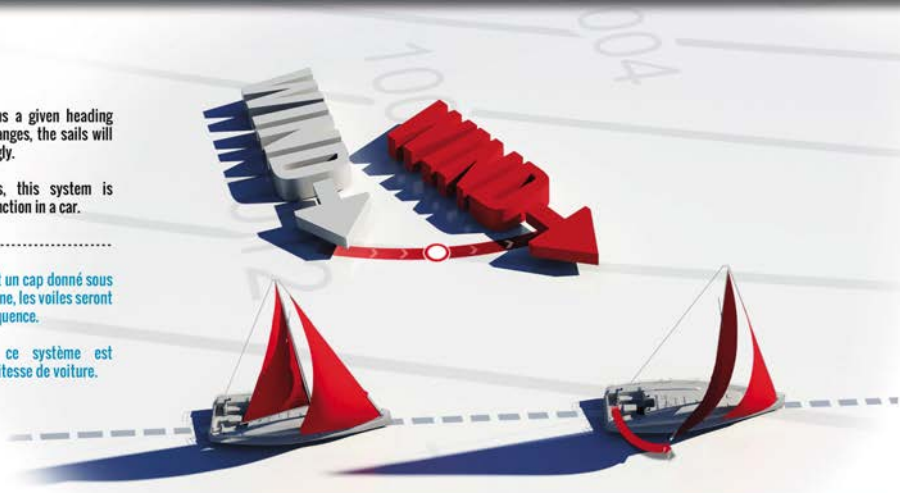
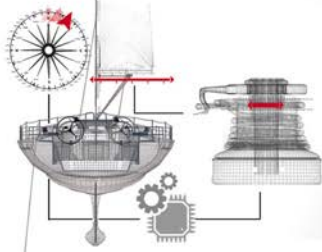
SO EASY TO SAIL
TELLEMENT SIMPLE

Alternatively, if the boat maintains a given heading under autopilot and wind angle changes, the sails will automatically be trimmed accordingly.

Ideal for long distances cruises, this system is comparable to the cruise control function in a car.

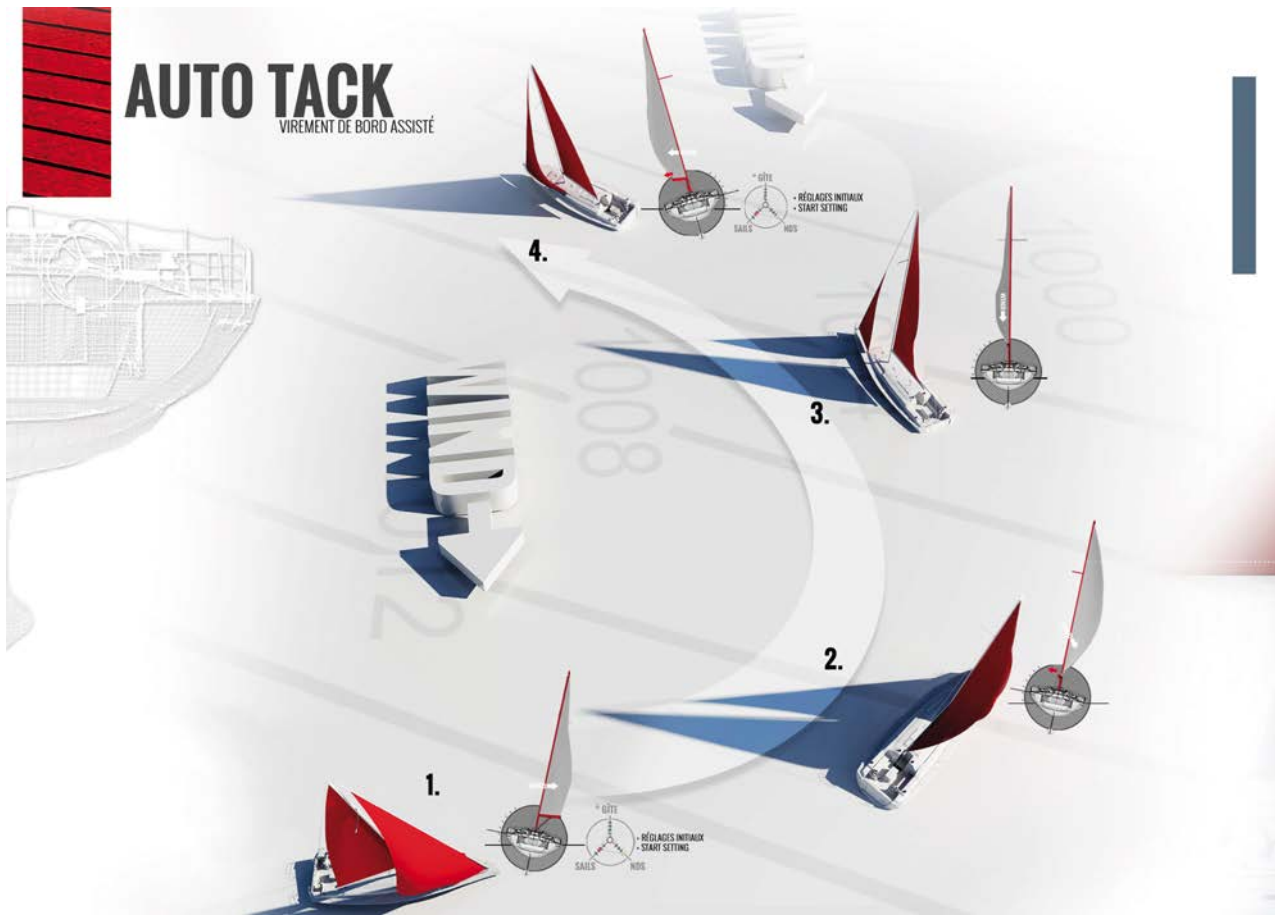
Autre cas de figure, si le bateau suit un cap donné sous pilote automatique et si le vent tourne, les voiles seront réglées automatiquement en conséquence.

Idéal pour longues distances, ce système est comparable avec un régulateur de vitesse de voiture.



AUTO TACK

VIREMENT DE BORD ASSISTÉ



The helmsperson pushes the Auto Tack button, and turns the wheel to tack the boat.

The system automatically operates the primary winches to pull in one sheet and ease the other.

Sails are trimmed to the same angle as before the turn, but on the opposite tack.

L'utilisateur appuie sur le bouton auto tack et manœuvre la barre à roue pour que le bateau vire.

Le système gère automatiquement les winchs d'écoutes de génois pour choquer d'un côté et border de l'autre.

Le système retrouve le réglage de voiles défini avant le virement de bord.



1. TRIM THE SAILS
RÉGLEZ LES VOILES



2. ACTIVATE AUTO TACK
ACTIVEZ L'AUTO TACK



3. TURN THE WHEEL
TOURNEZ LA BARRE

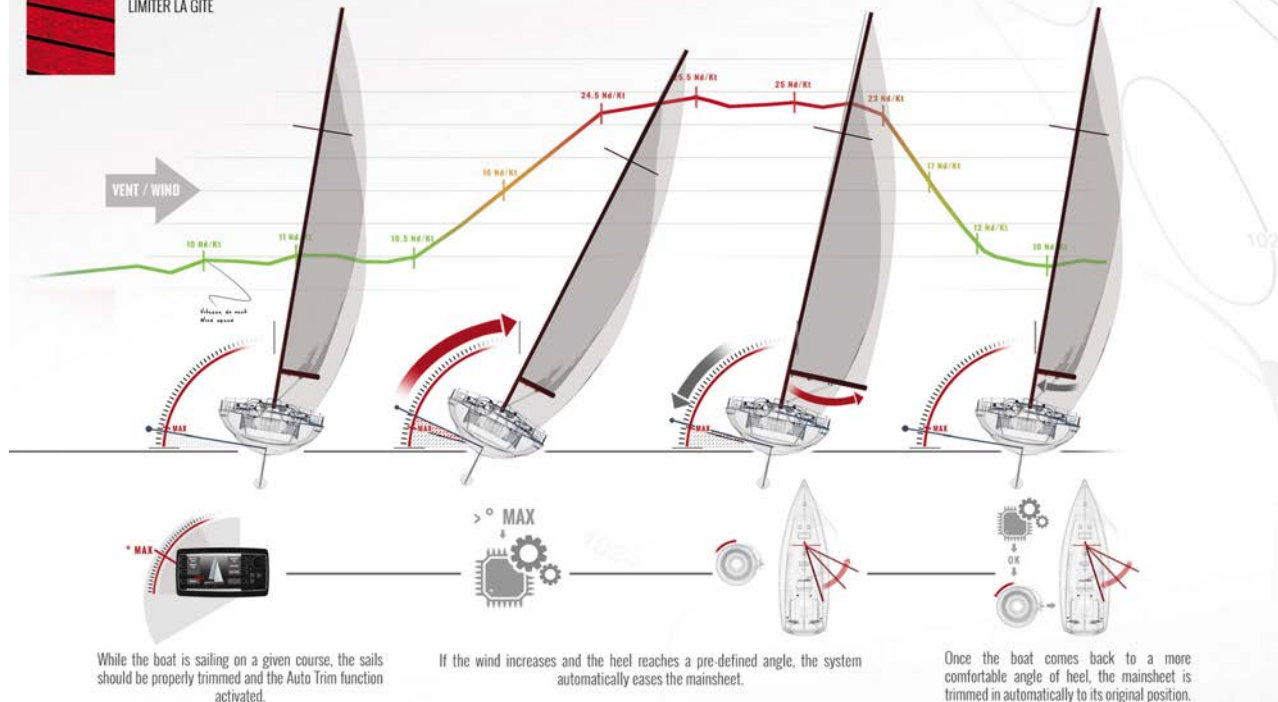


4. TACK FINISHED
VIREMENT TERMINE



HEEL LIMITER

LIMITER LA GÎTE



While the boat is sailing on a given course, the sails should be properly trimmed and the Auto Trim function activated.

Le bateau navigue selon un cap donné avec des voiles correctement réglées et la fonction Auto Trim activée.

If the wind increases and the heel reaches a pre-defined angle, the system automatically eases the mainsheet.

Si le vent augmente et que la gîte atteint la limite définie, le système choqe automatiquement la grand voile.

Once the boat comes back to a more comfortable angle of heel, the mainsheet is trimmed in automatically to its original position.

Une fois que le bateau retrouve une gîte plus confortable, la voile est à nouveau automatiquement bordée.

