

Sun Odyssey

379



## S U M M A R Y

- > SPECIFICATIONS
- > KEY POINTS
- > EXTERIOR
- > INTERIOR
- > SAILS
- > CONSTRUCTION
- > UPHOLSTERY
- > ELECTRONIC PACKAGES



JEANNEAU



## TECHNICAL INFORMATION

Overall length: ..... 11,34 m / 37' 2"  
 Hull length: ..... 10,98 m / 36'  
 Waterline length: ..... 10,40 m / 34' 1"  
 Beam: ..... 3,76 m / 12' 4"

Displacement: ..... 6.700 kg / 14.771 lbs  
 Standard keel draft: ..... 1,95 m / 6' 4"  
 Shoal draft: ..... 1,50 m / 4' 11"  
 Swing keel draft: ..... 1,10-2,25 m / 3' 7"-7' 4"

Cabins: ..... 2 / 3  
 Berths: ..... 4 / 6 + 3

Engine power: ..... Yanmar 29 Hp / 21 Kw  
 Fuel capacity: ..... 130 l / 34 US gal  
 Water capacity: ..... 200 l / 53 US gal  
 Cold capacity: ..... 185 l / 49 US gal

Sail area:  
 - Standard ..... 70 m<sup>2</sup> / 754 Sq ft

CE Category: ..... A8 / B9 / C12 Pers  
 Designers: ..... Marc Lombard - Jeanneau Design

## VERSIONS • LAYOUTS

Fixed keel version  
 Shoal draft version (twin rudders)  
 Swing keel version (twin rudders)

2 cabins / 1 head  
 3 cabins / 1 head

## EXTERIOR

### *Deck layout worthy of a 40-footer:*

- **Twin helm steering** for optimal ergonomics in the cockpit and ease of handling
- Easy access to the water **via a drop-down transom**
- **Flush deck hatches**

### *Contemporary style and comfortable cruising:*

- **Multiple keel options** including a specially-designed winged shoal keel and a beach-able swing keel (only boat in its category to offer this version)
- “Unlimited Ocean” **category A** rating from the CE
- Hull with hard chine and appendages designed **for high-performance and course stability**
- **Sleek and modern** deck lines
- **All sheets are lead aft to helm winches**
- **Modern sail plans** with multiple choices

## INTERIOR

### *Designed with personalisation in mind:*

- **Contemporary styling** that brings together traditional materials found throughout the Sun Odyssey range (solid wood, stainless steel, etc...)
- **Emphasis on storage and liveability** with a high level of standard equipment and available options reserved for larger yachts (air conditioning, bow thruster, etc...)
- **Numerous options that are usually reserved for larger boats** (air conditioning, bow thruster, etc...)
- Plenty of functional details for **the true cruiser** (wet locker, large refrigerator, etc...)
- Lots of different interior ambiances

### *All the elements of the Sun Odyssey range:*

- Each area is **spaciously laid out**
- **Light and ventilation**
- **High-end materials** (leather, stainless steel and solid wood)



## HULL AND KEEL: Modern and balanced

- **Marc Lombard design**
- Several different **keel and rudder** configurations
- **Hard chine on hull** creates stability and enhances interior volume
- **Long water line** provides performance under sail and power
- **Beam is carried very far aft**, but the beam remains moderate for access to marina slips

## DECK AND COCKPIT: Everything you need

- **Twin wheels** open up the cockpit
- **Harken deck hardware** including mainsheet traveller
- **Easy access to the water** with the fold-down transom plate-forme
- **Large, optional cockpit table** includes storage, lighting and place for swiveling GPS mount
- **Flush hatches** for styling and for safety when moving about on the deck
- **Plenty of storage** including dedicated spaces for the companionway door, liferaft and all the sailing gear
- **Deep anchor locker** with stainless steel anchor roller



## FIXED KEEL

Standard (1.95m) with high-aspect ratio single rudder

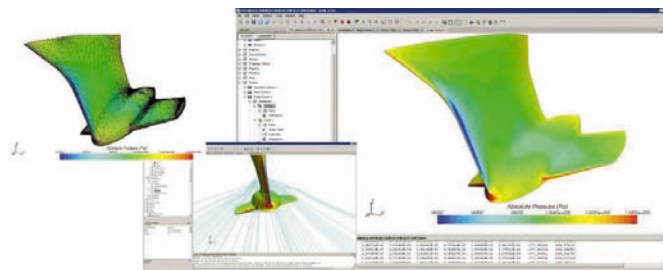
A powerful, modern hull with the chine ensures performance at every sailing angle.



**Advantage:** All-around performance with a draft less than 2m

## WINGED SHOAL KEEL

Option (1.50m) with twin rudders



**Advantages:** Marc Lombard's team used powerful hydrodynamic software to ensure excellent performance and lift while retaining a moderate draft.

This version allows access to shallow areas without compromising sailing performance.

## BEACH-ABLE SWING KEEL

Option (1.1m centreboard up / 2.25m centreboard down) with twin rudders

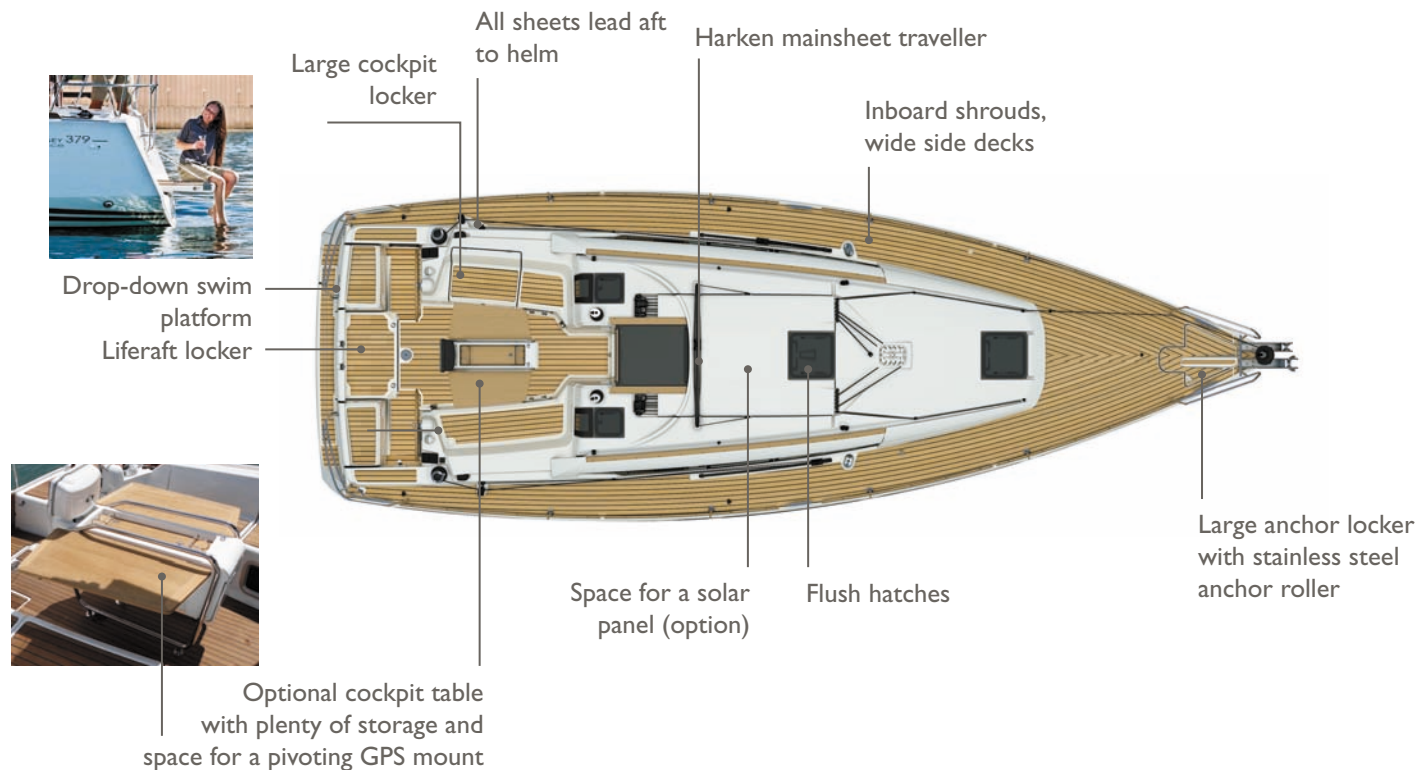


### Advantages:

- External keel box means that there is no loss of interior volume
- The twin rudders mean that the boat can be beached at low tide
- The control line for the keel is lead back to the coachroof winch for easy adjustment from the cockpit
- A through hull valve under the floor allows you to unblock the keel if it gets jammed with slit
- Jeanneau is the only major builder to offer this type of version in this size



## DECK





DECK (continued)





## INTERIOR: Style and function

- **Spacious interior** with 2 or 3 cabin versions
- **Separate shower compartment** exists in both versions
- **LED lighting** is standard
- **Lots of storage** especially in the galley and cabins
- **Plenty of ventilation and light** provided by fixed windows, opening ports and flush hatches
- **High level of standard equipment** 185L fridge compartment, 40L hot water heater,...



## INTERIOR LAYOUTS

**2 cabins version / 1 head**



**3 cabins version / 1 head**



## SALOON



Cabinet and end table in saloon  
(2 cabin)

Upgrade table (option) with  
large surface, integrated bar

Standard table with  
removable legs



Navigation station desk



Sliding, opaque shades

Conversion to double berth



Hanging locker  
in saloon  
(2 cabin)

Long sofa can be used as a berth

Book holder  
in the saloon

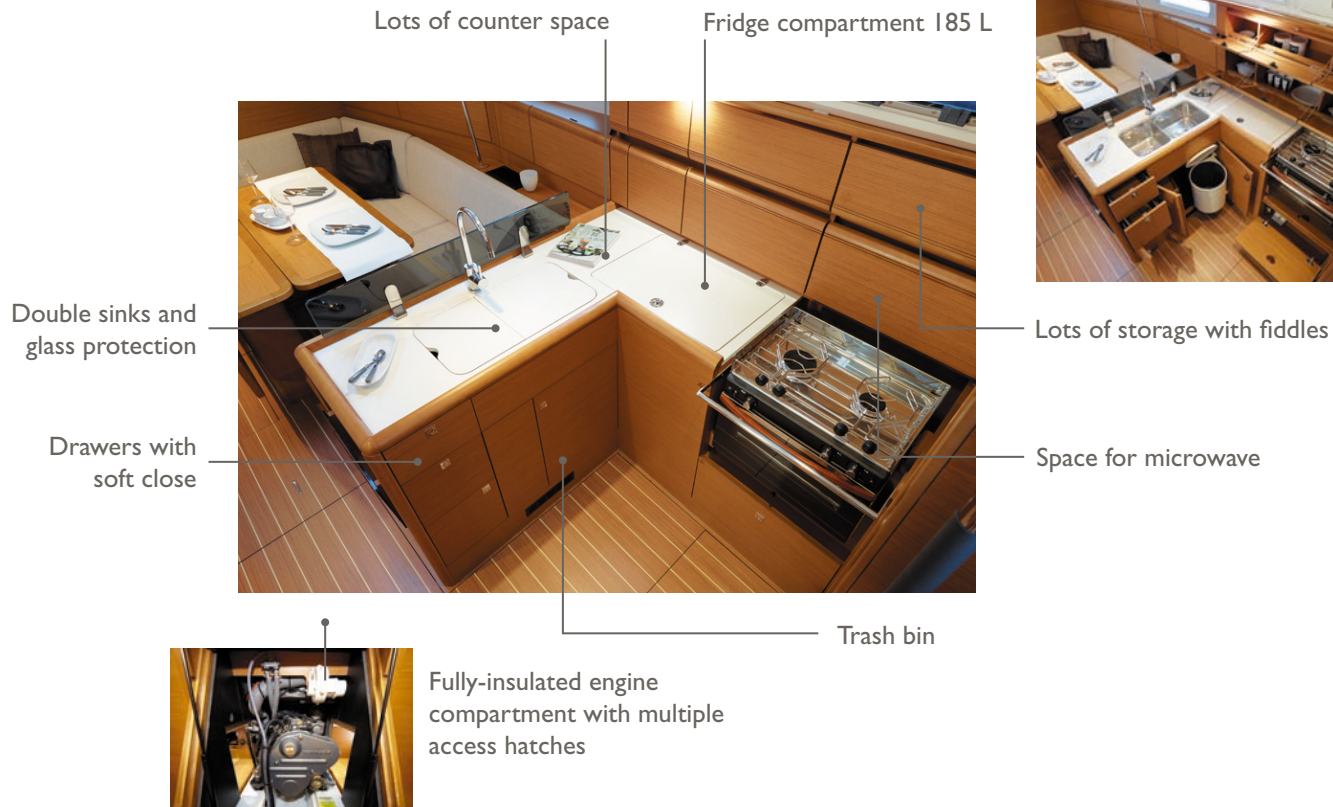


## LUXURY SALOON TABLE (option)

- 2 leaves allow for plenty of seating around the table
- Easy converts into a double berth
- Bar locker in central section



## FULLY-EQUIPPED GALLEY

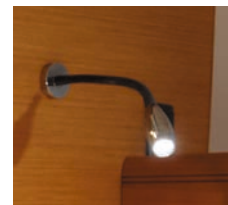


## AFT CABIN

Each aft cabin has 1 opening hatch, 1 opening port, 1 hull port and a curved plexi port for light and ventilation



LED reading light in each cabin



Large hanging locker



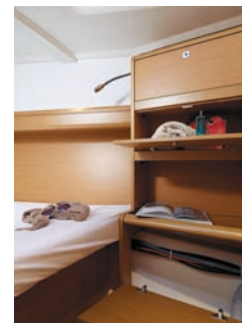
## FORWARD CABIN

Flush deck hatch provides light and ventilation with integrated screen and shade



LED reading lights

Lots of storage cabinets and a large hanging locker



Spacious forward cabin with double berth



## HEAD

Separate shower compartment in both interior versions

Head compartment with separate plexiglass shower in both interior layout configurations

Multiple storage cabinets

Storage locker accessible from head compartment with a storage cabinet and sliding baskets (2 cabin version)



2 cabins version



3 cabins version



## SAIL AND RIG PLANS: Sails for every sailor

### Select the sail plan that best fits your style:

- **High aspect ratio rig** for maximum performance while limiting the loads on the sheets.
- Inboard shrouds allow better trim angle on the genoa and keeps the side decks clear
- Choice of self-tacking jib, Performance sails in Mylar/taffeta, fully-battened or furling mainsail...
- **Code 0** offered as an option for sailing in light wind conditions



## SPECIFICATIONS

### BATTENED MAINSAIL :

- Dacron®
- Horizontal panels
- Stainless steel eyes
- UV-stabilised thread
- Draft stripe
- Radial reinforcements
- Adjustable leech line
- Loose-footed
- 2 reef points each with singleline reefing system

• Area : 35 m<sup>2</sup>



### LARGE OVERLAPPING FURLING GENOA (132%) :

- Dacron®
- Horizontal panels
- UV-stabilised thread
- Webbing strap at head
- Bolt-rope for furler
- Anti-UV protection on foot and leech
- Draft stripe
- Webbing strap at tack
- Reefing marks
- Adjustable leech line

• Area : 35 m<sup>2</sup>



## ADVANTAGES

- High-aspect rig for maximum performance
- Easy to handle sail plan
- Versatile and balanced sail plan at all sailing angles



I = 14,22 m / 46'7"  
J = 4,15 m / 13'7"  
P = 13,60 m / 44'7"  
E = 4,25 m / 13'11"

## MAINSAILS

**PERFORMANCE MAINSAIL : 35 m<sup>2</sup>**



**FURLING MAINSAIL : 27,2 m<sup>2</sup>**



## FORESAILS

**PERFORMANCE GENOA 132% : 35 m<sup>2</sup>**



**CODE 0 : 55,2 m<sup>2</sup>**



**SELF-TACKING JIB : 23,3 m<sup>2</sup>**

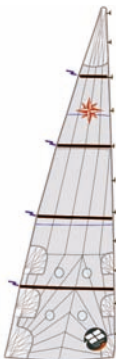


## SPECIFICATIONS

### BATTENED MAINSAIL

#### Performance full-batten :

- Triradial cut
- Mylar/taffeta X-Grid fabric in grey colour
- Stainless steel eyes
- UV-stabilised thread
- Draft stripe
- Radial reinforcements
- Adjustable leech line
- Loose-footed
- Fibreglass battens
- 2 reef points each with singleline reefing system
- Replaces the standard mainsail
- **Area : 35 m<sup>2</sup>**



## ADVANTAGES

- High-end sail cloth material means less stretch and better performance
- Powerful sail plan in light winds
- Tri radial cut ensures better sail shape and improved resistance to wear.



## PERFORMANCE SAILS : MYLAR TAFFETAS X-GRID

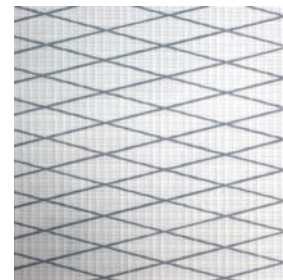
Working in collaboration with Dimension-Polyant and Technique Voiles, Jeanneau has developed a new Mylar Taffetas X-Grid fabric for the Performance range.

The triradial construction of the sail contributes to superior shape holding, but other forces can act on the individual panels. By using a specially-designed X-Grid® of fibres angled at 6° laminated into the fabric, better bias control can be achieved which makes the sail more resistant to deformation and aging.

The performance of these new fabrics provides a more stable sail cloth that is lighter, easier to handle, with better shape control over time.

These new Performance sails are easily recognisable; they include a taffeta laminate that is light grey that gives them a very “hi-tech” look.

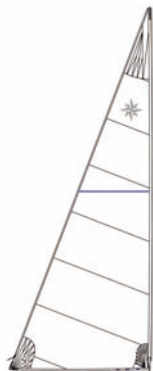
- 1 - Protective taffeta
- 2 - Polyester film
- 3 - X-Grid® fibres
- 4 - Polyester scrim



## SPECIFICATIONS

### FURLING MAINSAIL :

- Dacron®
- Horizontal panels
- UV-stabilised thread
- Radial reinforcements
- Draft stripe
- Adjustable leech line
- UV protection on clew
- Replaces the standard mainsail
- Included in furling mast option
- **Area : 27,2 m<sup>2</sup>**



## ADVANTAGES

- Easy handling
- Quick furling of the sail
- Easy reefing
- Same height as the classic mainsail
- Compatible with any of the foresail options



## SPECIFICATIONS

### FURLING GENOA

#### 132% Performance :

- Mylar/taffeta X-Grid fabric in grey colour
- Triradial cut
- UV-stabilised thread
- Webbing strap at head
- Bolt-rope for furler
- Anti-UV protection on foot and leech
- Radial reinforcements
- Foam luff
- Draft stripe
- Webbing strap at tack
- Reefing marks
- Adjustable leech line
- Replaces the standard genoa

• **Area : 35 m<sup>2</sup>**



## ADVANTAGES

- High-end sail cloth material means less stretch and better performance
- Tri radial cut ensures better sail shape and improved resistance to wear.

## PERFORMANCE SAILS : MYLAR TAFFETAS X-GRID

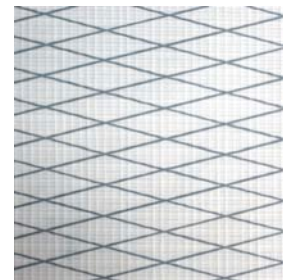
Working in collaboration with Dimension-Polyant and Technique Voiles, Jeanneau has developed a new Mylar Taffetas X-Grid fabric for the Performance range.

The triradial construction of the sail contributes to superior shape holding, but other forces can act on the individual panels. By using a specially-designed X-Grid® of fibres angled at 6° laminated into the fabric, better bias control can be achieved which makes the sail more resistant to deformation and aging.

The performance of these new fabrics provides a more stable sail cloth that is lighter, easier to handle, with better shape control over time.

These new Performance sails are easily recognisable; they include a taffeta laminate that is light grey that gives them a very “hi-tech” look.

- 1 - Protective taffeta
- 2 - Polyester film
- 3 - X-Grid® fibres
- 4 - Polyester scrim



SO379 - 07/2012



## SPECIFICATIONS

### SELF-TACKING FURLING JIB :

- Mylar/taffeta X-Grid fabric in grey colour
- Triradial cut
- UV-stabilised thread
- Webbing strap at head
- Bolt-rope for furler
- Anti-UV protection on foot and leech
- Draft stripe
- Radial reinforcements
- Webbing strap at tack
- Adjustable sheet attachment
- Adjustable leech line
- Replaces the standard genoa
- Requires deck hardware for self-tacking jib
- **Area : 23,3 m<sup>2</sup>**



## ADVANTAGES

- Hands-free tacking
- Great up-wind performance
- Perfect for short-handed sailing



## PERFORMANCE SAILS : MYLAR TAFFETAS X-GRID

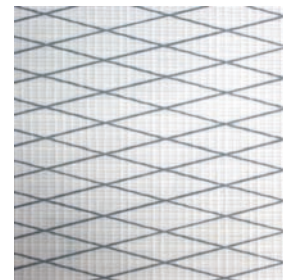
Working in collaboration with Dimension-Polyant and Technique Voiles, Jeanneau has developed a new Mylar Taffetas X-Grid fabric for the Performance range.

The triradial construction of the sail contributes to superior shape holding, but other forces can act on the individual panels. By using a specially-designed X-Grid® of fibres angled at 6° laminated into the fabric, better bias control can be achieved which makes the sail more resistant to deformation and aging.

The performance of these new fabrics provides a more stable sail cloth that is lighter, easier to handle, with better shape control over time.

These new Performance sails are easily recognisable; they include a taffeta laminate that is light grey that gives them a very “hi-tech” look.

- 1 - Protective taffeta
- 2 - Polyester film
- 3 - X-Grid® fibres
- 4 - Polyester scrim



## SPECIFICATIONS

### CODE 0

#### selden continuous line furler :

- Laminate Mylar/Aramid X-Grid fabric in light grey
- Triradial cut
- Anti twist luff cord
- UV-stabilised thread
- Straps for sheet attachment
- Adjustable leech and foot lines
- Requires rigging for asymmetrical spinnaker / Code 0
- **Area : 55,2 m<sup>2</sup>**



## ADVANTAGES

- A light wind sail designed for use between 60° and 120°
- Continue to sail when others have given up and turned on the motor
- Continuous line furler allows easy deployment and furling from the cockpit
- Ideal addition to boats with small overlapping jibs and self-tacking jibs



## CODE 0: MYLAR ARAMID X-GRID

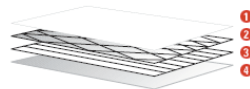
For the development of the new Code 0 sails on a continuous line furler, Jeanneau selected a sail cloth that is perfectly adapted for use in light airs. Highly resistant, light weight and able to be furled, the Mylar Aramid X-Grid has a light grey finish that is translucent.

Unidirectional Aramid fibres, vacuum-bagged together between two polyester films, provide an unequalled resistance to weight ratio. This ultra light sail is easy to handle and fills with the slightest puff of wind. Adding the X-Grid® polyester fibres at a 6° angle provides excellent bias control in all directions and improves sail shaping, as well as, resistance to tearing.

Lastly, a taffeta is added to the external laminate of the sail cloth to protect the sail from ultraviolet light and wear during furling or storage.

The Code 0 sails from Jeanneau integrate these high-performance materials to meet the exacting demands of our owners. In addition to these high-end materials, the look of these sails sets Jeanneau apart.

- 1 - Polyester film
- 2 - X-Grid® fibres
- 3 - Unidirectional Aramid fibres
- 4 - Protective taffeta



SO379 - 07/2012

## PRISMA PROCESS



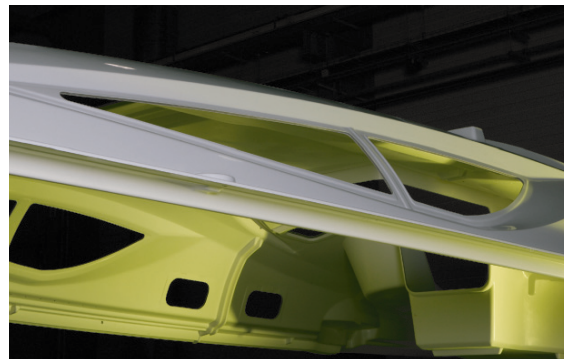
Leader in vacuum bagging technology for the construction of racing boats, JTA developed an resin injection process applicable to the construction of cruising boats. By using advanced engineering, precisely positioned layers of glass fabric and mat and specially developed core materials, Jeanneau is able to mould a deck to exacting tolerances.

Jeanneau's leadership in this domain gives it a substantial advantage over its competitors and ensures unequalled quality to the customer.

This 21<sup>st</sup> century technology allows Jeanneau to manufacture complex fibreglass parts with:

- Perfect finish on both sides (no need for a counter mould)
- Reduced weight (providing the sailboat better stability/performance)
- Increased strength and rigidity of the piece (quality of lay-up)
- Reduction by 90% of VOC emissions (environmentally-friendly)
- Optimum working conditions for the production team (no contact with resins/catalysts)
- High quality parts (precise control of gelcoat, core materials and resin injection)

The deck of the Jeanneau 53 is the largest mass-produced injection fibreglass part in the world.



## ALPI WOOD - FINETEAKE

### SALES POINTS:

#### Environmental:

- Ayous (Triplochiton scleroxylon - Sterculiacées) trees in managed forests of indigenous hardwoods are selected and cut, with a constant care given towards long term preservation of natural resources.
- Teak and other soft rainforest woods often come from geopolitically sensitive regions and are not managed in a sustainable way.

#### Quality:

- These ALPI wood panels are substantially more expensive and reliable than standard marine plywood. They are used by top of the line furniture manufacturers, as well as many exclusive super-yacht builders (for example Azimut and Ferretti only use ALPI wood).
- Consistency of finish and colors throughout the boat.
- Elimination of “defects” in wood panels.

### Durability:

- Harder finish that is more resistant to humidity
- Better resistance to UV
- Easier repairs as veneer is tinted through and through so clear varnishes can be used



## Ambiance "MEDITERRANEO"

### SALOON



#### BACKRESTS & SEATS

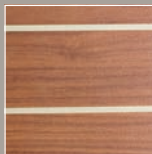
► PVC Mediterraneo Old White

**UPHOLSTERY** leather / leatherette ► *Chocolat*

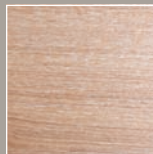


#### FLOOR

► *Standard*



► *Option: Light oak*



Infill cushion for convertible berth in GER White fabric

### CABINS

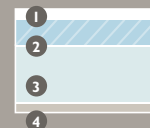
#### SEATS

► PVC Mediterraneo Old White



#### BEDS

► *Premium mattress*



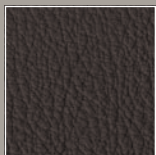
- 1- Removable mattress cover fabric with Ultra-Fresh® is anti-microbial, anti-bacterial and non-allergenic
- 2- Top: 40mm of High-Resilience foam
- 3- Base: 80mm of high-density polyether foam
- 4- Breathable fabric

## Ambiance "METROM"

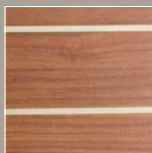
### SALOON



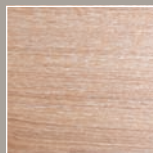
**UPHOLSTERY** leather / leatherette ▶ *Chocolat*



**FLOOR**  
▶ *Standard*



▶ *Option: Light oak*



### BACKRESTS & SEATS

▶ *Metrom écru*



### CABINS

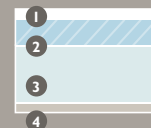
#### SEATS

▶ *PVC Mediterraneo Old White*



#### BEDS

▶ *Premium mattress*



- 1- Removable mattress cover fabric with Ultra-Fresh® is anti-microbial, anti-bacterial and non-allergenic
- 2- Top: 40mm of High-Resilience foam
- 3- Base: 80mm of high-density polyether foam
- 4- Breathable fabric

Infill cushion for convertible berth in GER White fabric

## Ambiance "CLASSIC"

### SALOON

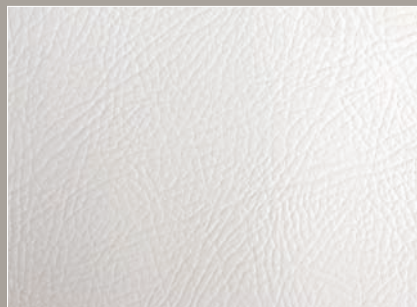
#### BACKRESTS

► GER white



#### SEATS

► PVC Mediterraneo Old White

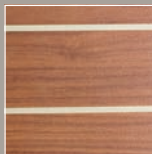


**UPHOLSTERY** leather /  
leatherette ► *Chocolat*

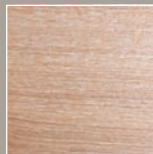


#### FLOOR

► *Standard*



► *Option: Light oak*



### CABINS

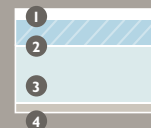
#### SEATS

► PVC Mediterraneo  
Old White



#### BEDS

► *Premium mattress*



1- Removable mattress cover fabric with Ultra-Fresh® is anti-microbial, anti-bacterial and non-allergenic

2- Top: 40mm of High-Resilience foam

3- Base: 80mm of high-density polyether foam

4- Breathable fabric

Infill cushion for convertible berth in GER White fabric



## Ambiance "LOFT"

### SALOON



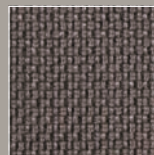
#### BACKRESTS

► *Mega chinchilla*

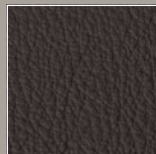


#### SEATS

► *Tudor graphite*

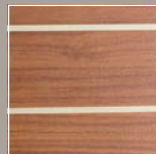


**UPHOLSTERY** leather /  
leatherette ► *Chocolat*



#### FLOOR

► *Standard*



► *Option: Light oak*



### CABINS

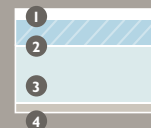
#### SEATS

► *PVC Mediterraneo  
Old White*



#### BEDS

► *Premium mattress*



- 1- Removable mattress cover fabric with Ultra-Fresh® is anti-microbial, anti-bacterial and non-allergenic
- 2- Top: 40mm of High-Resilience foam
- 3- Base: 80mm of high-density polyether foam
- 4- Breathable fabric

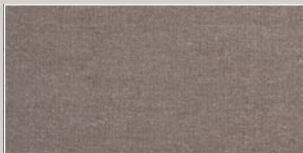
Infill cushion for convertible berth in GER White fabric

## EXTERIOR UPHOLSTERY

### SPRAYHOOD PROTECTION BIMINI / LAZY BAG



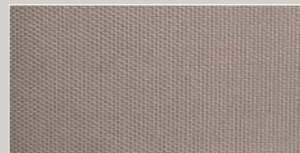
► *Sunbrella taupe*



### COCKPIT CUSHIONS



► *Sunbrella sling taupe*



# SIMRAD

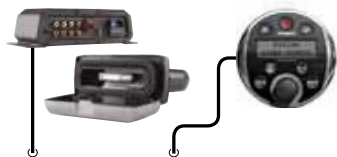
## Trim Level Preference - CHART TABLE

### Simrad SONIC HUB

Simrad product code: 000-10143-001

### SonicHub Remote

Simrad product code: 000-10561-001



## Electronic Pack - HELM STATIONS

### DTS800 Speed/Depth/Temp Transducer

Simrad product code: 22098552



### IS40

Simrad product code: 000-10931-001



### IS40

Simrad product code: 000-10931-001



### 508 Wind Sensor

Simrad product code: 000-10570-001



## Optional Display COCKPIT

- 6.4" LED multifunction color display
  - Navionics regional cartography included
  - Integrated Pilot control (optional)
- Simrad product code: 000-10439-001



## Optional Wifi



- Wifi - Wireless Module
  - Free iPad application to control the MFD available in Q1 2013
- Simrad product code: 000-10933-001



## Optional Radar

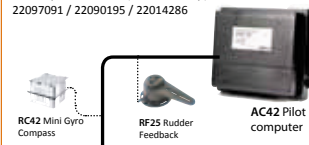
- Broadband Radar 4G
- Simrad product code: 000-10420-001



## Optional Autopilot

### Autopilot System

Simrad product codes (without Pump): 22097091 / 22090195 / 22014286



- IS40 Pilot Controller
- Simrad product code: 000-10932-001



OPTIONS



July 2012 - Non contractual document