

Sun Odyssey  
409



## S U M M A R Y

- > SPECIFICATIONS
- > KEY POINTS
- > EXTERIOR
- > INTERIOR
- > SAILS
- > 360 DOCKING
- > CONSTRUCTION
- > UPHOLSTERY
- > ELECTRONIC PACKAGES



JEANNEAU

Prism  Process



## TECHNICAL INFORMATION

Overall length: ..... 12,34 m / 40' 5"  
 Hull length: ..... 11,99 m / 39' 4"  
 Waterline length: ..... 11,00 m / 36' 1"  
 Beam: ..... 3,99 m / 13' 1"

Displacement: ..... 7.860 kg / 17.328 lbs  
 Standard keel draft: ..... 2,10 m / 6' 10"  
 Shoal draft: ..... 1,55 m / 5' 1"

Cabins: ..... 2 / 3  
 Berths: ..... 4 / 6 + 2

Engine power: ..... Yanmar 40 Hp / 29 Kw  
 Fuel capacity: ..... 200 l / 53 US gal  
 Water capacity: ..... 330 l / 87 US gal  
 Cold capacity: ..... 185 l / 49 US gal

Sail area:  
 - Standard ..... 76 m<sup>2</sup> / 818 Sq ft

CE category: ..... A9 / B10 / C12 Pers  
 Designers: ..... Philippe Briand - Jeanneau Design

## VERSIONS • LAYOUTS

Compatible 360 Docking - POD60

Fixed keel version  
 Shoal draft version

2 cabins / 1 head  
 2 cabins / 2 heads\*  
 3 cabins / 1 head  
 3 cabins / 2 heads

\* New - Model year 2013

## EXTERIOR

### ***Innovative deck plan and sleek styling:***

- Mainsheet led back to each helm: integrated lines make for a clean and safe deck layout
- Flush hatches
- Easy access to the sea via a fold-down transom

### ***Completely re-designed sail plan choices can be ordered “à la carte”\* :***

- Furling mainsail
- Performance mainsail
- 106%\* performance jib
- 140% performance genoa
- Self-tacking jib
- Code 0

## INTERIOR

### ***Contemporary interior design:***

- Lots of light and ventilation from 8 hull ports and plenty of flush hatches and ports
- Latest generation of Alpi Teak finish and, matte varnish gives the woodwork a luxurious feel
- Contemporary LED lighting sets off the interior
- Forward visibility through specially-designed curved hatch
- Fully separate shower in aft head compartment
- Contemporary styling and high-end materials

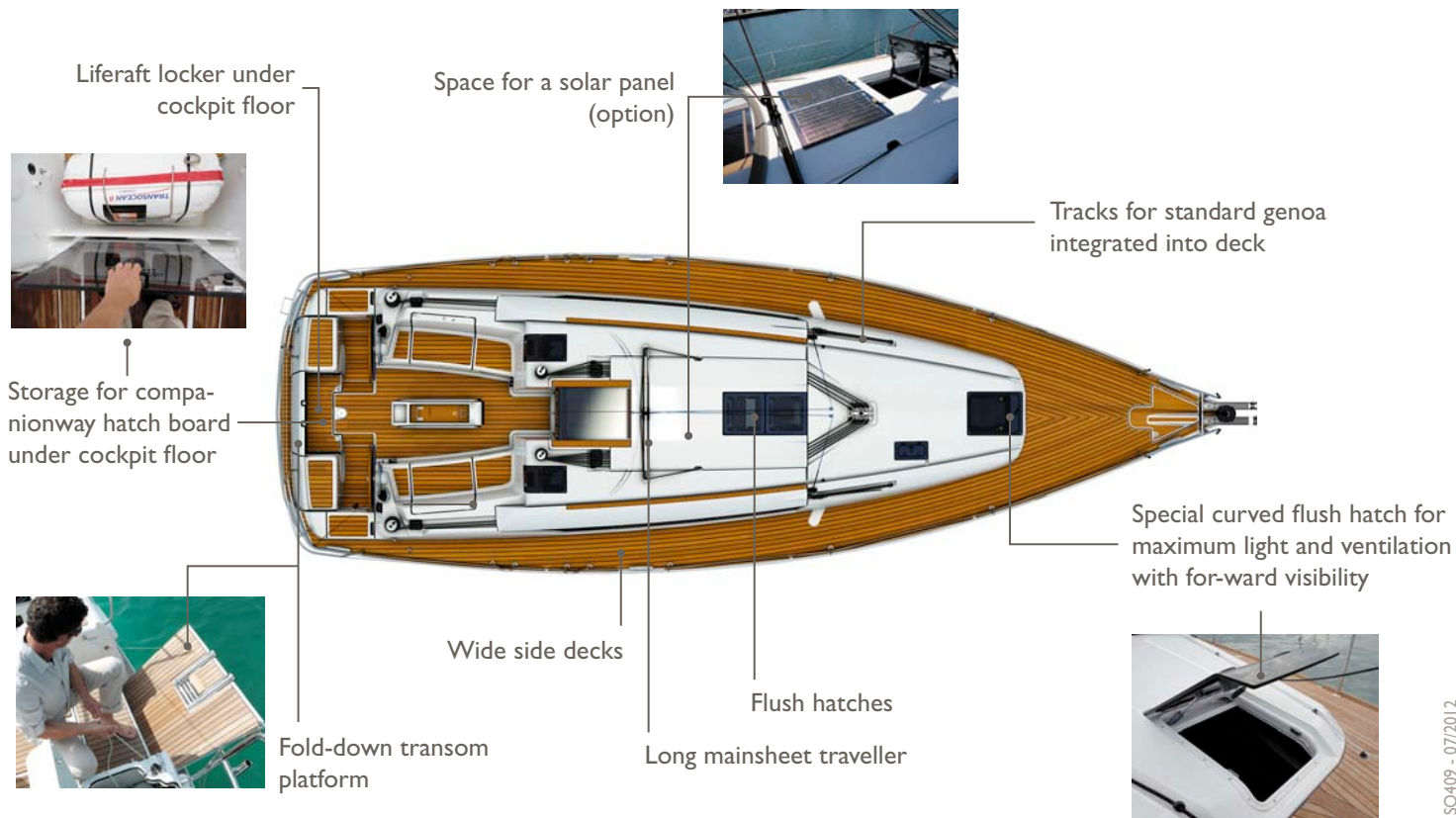
### ***Designed for personalisation:***

- Choice of traditional floorboard or a lighter flooring
- A palette of interior fabrics selected by our interior designers to adapt the interior to the taste of each client



\* New - Model year 2013

DECK



## DECK (continued)

Line storage lockers under helm seats keep helm station clear



2 large cockpit lockers



Twin-helm design to facilitate movement and comfort

Primary winches near helm stations

Main and jib sheets lead aft



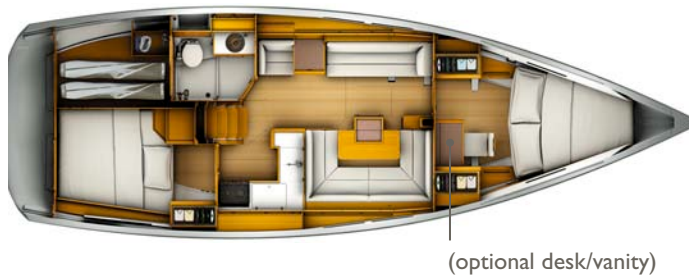
Curved plexi windows in aft cabins provide light

Large cockpit table with plenty of storage and place for a pivoting GPS mount



## LAYOUTS

2 cabins version / 1 head



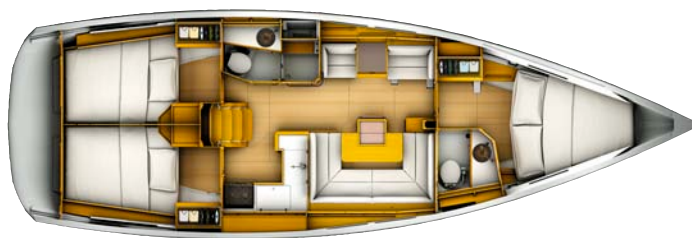
3 cabins version / 1 head



2 cabins version / 2 heads\*



3 cabins version / 2 heads



\* New - Model year 2013



## SALOON - GALLEY

L galley with return provides comfortable cooking even while underway



Standard saloon table with removable legs

Upgrade table (option) with large surface, integrated bar and transformable into a berth

Multiple storage cabinets with fiddles

Plenty of storage compartments and cabinets



Storage compartments under the seating

Direct access to the hull and structure under the removable floorboards

Fully-insulated engine compartment with multiple access hatches



Galley includes double sinks in stainless steel, lots of counter space and a fridge compartment with 12v refrigeration



Glass splash guard protects seating area

## DELUXE SALOON TABLE

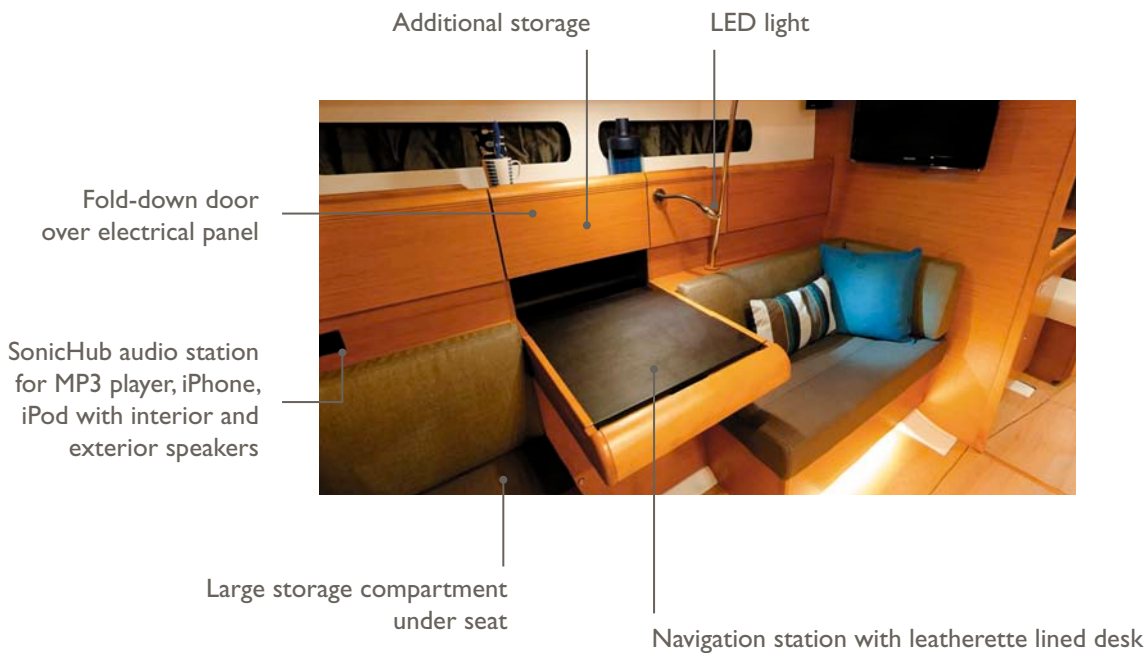
- 2 leaves in order to provide plenty of surface area
- Easily converted to a double berth
- Bar cabinet integrated into base
- Leather-wrapped handrail and central plateau



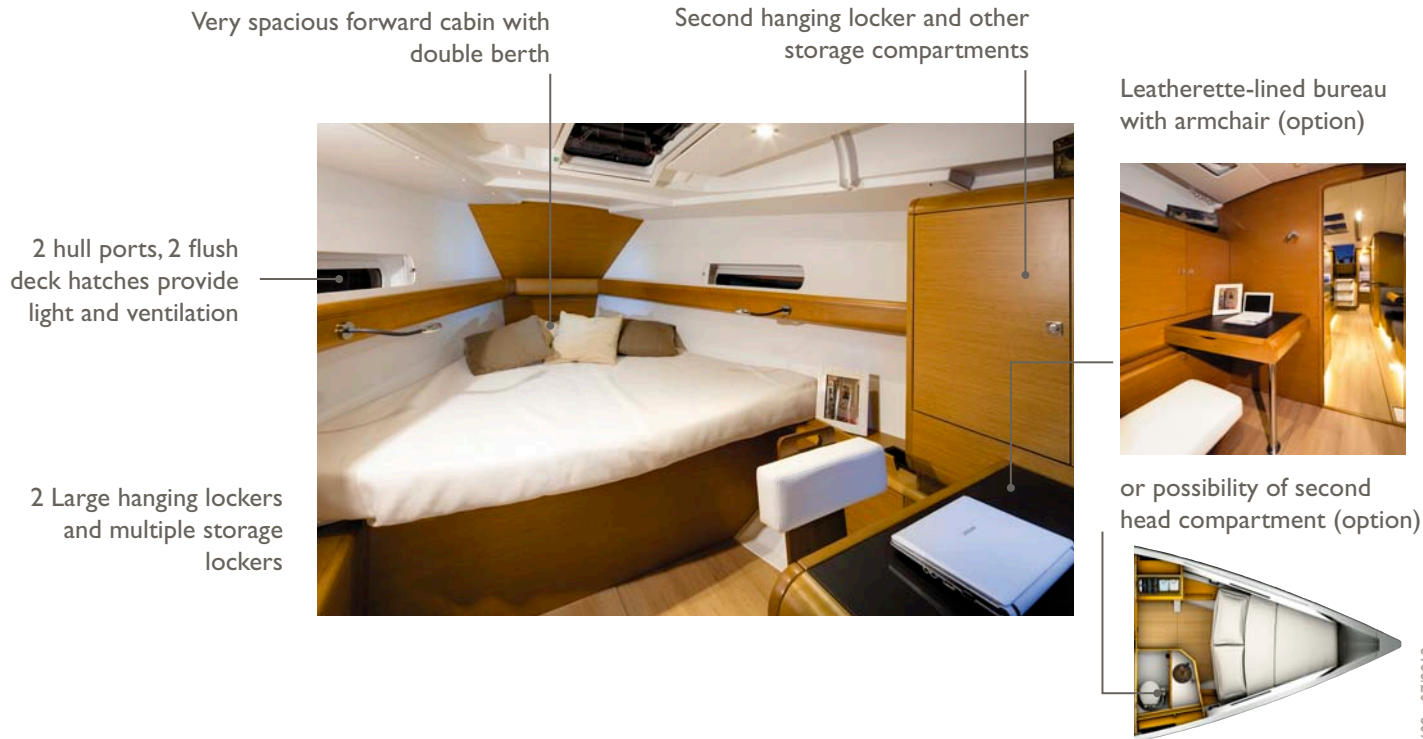


## CHART TABLE

Designed for a life at sea

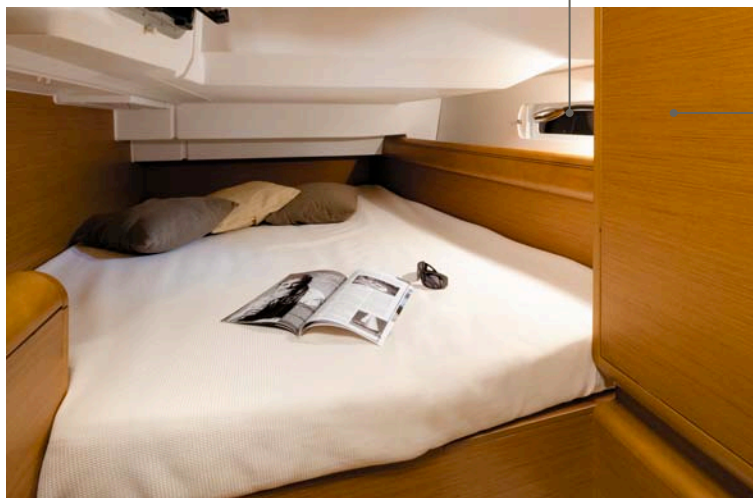


## FORWARD CABIN OWNER



## AFT CABINS

Each aft cabin has 1 opening hatch, 1 opening port, 1 hull port and a curved plexi port for light and ventilation



Large aft cabin with hanging locker

Port aft head with large toilet, separate shower compartment (trim level), stainless steel sink and plenty of light and ventilation

## SAIL AND RIG PLANS: Sails for every sailor

### Select the sail plan that best fits your style :

- **High aspect ratio rig** for maximum performance while limiting the loads on the sheets.
- Inboard shrouds allow better trim angle on the genoa and keeps the side decks clear
- Choice of self-tacking jib, Performance sails in Mylar/taffeta, fully-battened or furling mainsail...
- **Code 0** offered as an option for sailing in light wind conditions



## SPECIFICATIONS

### BATTENED MAINSAIL:

- Dacron®
- Horizontal panels
- Stainless steel eyes
- UV-stabilised thread
- Draft stripe
- Radial reinforcements
- Adjustable leech line
- Loose-footed
- 2 reef points each with singleline reefing system

• Area : 43,5 m<sup>2</sup>



### SHORT OVERLAPPING FURLING GENOA (106%) :

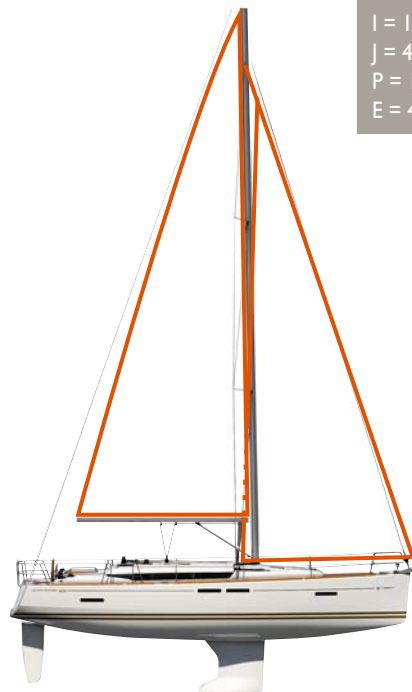
- Dacron®
- Horizontal panels
- UV-stabilised thread
- Webbing strap at head
- Bolt-rope for furler
- Anti-UV protection on foot and leech
- Draft stripe
- Webbing strap at tack
- Reefing marks
- Adjustable leech line
- Compatible with Smart Tacking

• Area : 32,5 m<sup>2</sup>



## ADVANTAGES

- High-aspect rig for maximum performance
- Easy to handle sail plan
- Versatile and balanced sail plan at all sailing angles



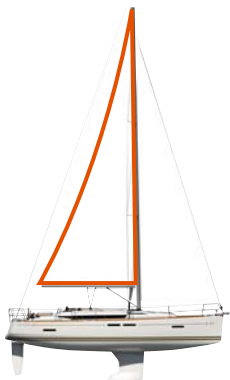
I = 15,50 m / 50'10"  
J = 4,52 m / 14'9"  
P = 15,00 m / 49'2"  
E = 4,90 m / 16'

## MAINSAILS

**PERFORMANCE MAINSAIL : 43,5 m<sup>2</sup>**



**FURLING MAINSAIL : 34,2 m<sup>2</sup>**

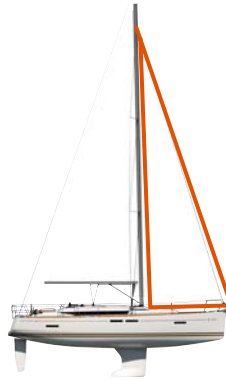


## FORESAILS

**PERFORMANCE GENOA 106%\* :  
32,5 m<sup>2</sup>**



**SELF-TACKING JIB : 28,2 m<sup>2</sup>**



**PERFORMANCE GENOA 140% :  
46,1 m<sup>2</sup>**



**CODE 0 : 70 m<sup>2</sup>**



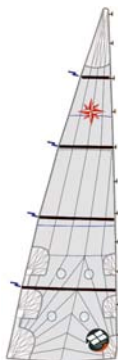
\* New - Model year 2013



## SPECIFICATIONS

### FULL-BATTENED PERFORMANCE MAINSAIL :

- Triradial cut
- Mylar/taffeta X-Grid fabric in grey colour
- Stainless steel eyes
- UV-stabilised thread
- Draft stripe
- Radial reinforcements
- Adjustable leech line
- Loose-footed
- Fibreglass battens
- 2 reef points each with singleline reefing system
- Replaces the standard mainsail
- **Area : 43,5 m<sup>2</sup>**



## ADVANTAGES

- High-end sail cloth material means less stretch and better performance
- Powerful sail plan in light winds
- Tri radial cut ensures better sail shape and improved resistance to wear.



## PERFORMANCE SAILS : MYLAR TAFFETAS X-GRID

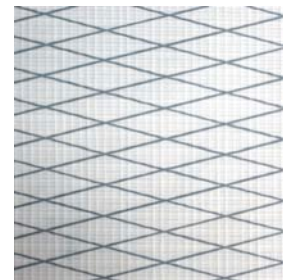
Working in collaboration with Dimension-Polyant and Technique Voiles, Jeanneau has developed a new Mylar Taffetas X-Grid fabric for the Performance range.

The triradial construction of the sail contributes to superior shape holding, but other forces can act on the individual panels. By using a specially-designed X-Grid® of fibres angled at 6° laminated into the fabric, better bias control can be achieved which makes the sail more resistant to deformation and aging.

The performance of these new fabrics provides a more stable sail cloth that is lighter, easier to handle, with better shape control over time.

These new Performance sails are easily recognisable; they include a taffeta laminate that is light grey that gives them a very “hi-tech” look.

- 1 - Protective taffeta
- 2 - Polyester film
- 3 - X-Grid® fibres
- 4 - Polyester scrim



## SPECIFICATIONS

### FURLING MAINSAIL:

- Dacron®
- Horizontal panels
- UV-stabilised thread
- Radial reinforcements
- Draft stripe
- Adjustable leech line
- UV protection on clew
- Replaces the standard mainsail
- Included in furling mast option
- **Area : 34,2 m<sup>2</sup>**



## ADVANTAGES

- Easy handling
- Quick furling of the sail
- Easy reefing
- Same height as the classic mainsail
- Compatible with any of the foresail options



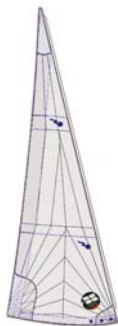
## SPECIFICATIONS

### FURLING GENOA

#### 106%\* Performance :

- Mylar/taffeta X-Grid fabric in grey colour
- Triradial cut
- UV-stabilised thread
- Webbing strap at head
- Bolt-rope for furler
- Anti-UV protection on foot and leech
- Radial reinforcements
- Draft stripe
- Webbing strap at tack
- Reefing marks
- Adjustable leech line
- Replaces the standard genoa

• Area : 32,5 m<sup>2</sup>



## ADVANTAGES

- High-end sail cloth material means less stretch and better performance
- Balanced sail plan for all sailing angles
- Easy to use in all conditions
- Compatible with Smart Tacking

\* New - Model year 2013

## PERFORMANCE SAILS : MYLAR TAFFETAS X-GRID

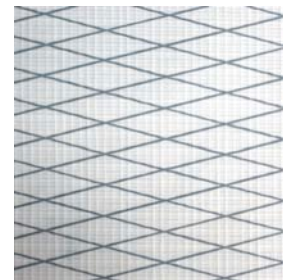
Working in collaboration with Dimension-Polyant and Technique Voiles, Jeanneau has developed a new Mylar Taffetas X-Grid fabric for the Performance range.

The triradial construction of the sail contributes to superior shape holding, but other forces can act on the individual panels. By using a specially-designed X-Grid® of fibres angled at 6° laminated into the fabric, better bias control can be achieved which makes the sail more resistant to deformation and aging.

The performance of these new fabrics provides a more stable sail cloth that is lighter, easier to handle, with better shape control over time.

These new Performance sails are easily recognisable; they include a taffeta laminate that is light grey that gives them a very “hi-tech” look.

- 1 - Protective taffeta
- 2 - Polyester film
- 3 - X-Grid® fibres
- 4 - Polyester scrim



SO409 - 07/2012

## SPECIFICATIONS

### FURLING GENOA

#### 140% Performance :

- Mylar/taffeta X-Grid fabric in grey colour
- Triradial cut
- UV-stabilised thread
- Webbing strap at head
- Bolt-rope for furler
- Anti-UV protection on foot and leech
- Radial reinforcements
- Foam luff
- Draft stripe
- Webbing strap at tack
- Reefing marks
- Adjustable leech line
- Replaces the standard genoa
- Requires deck hardware for large overlapping genoa
- **Area : 46,1 m<sup>2</sup>**



## ADVANTAGES

- High-end sail cloth material means less stretch and better performance
- Powerful sail plan in light winds
- Tri radial cut ensures better sail shape and improved resistance to wear.



## PERFORMANCE SAILS : MYLAR TAFFETAS X-GRID

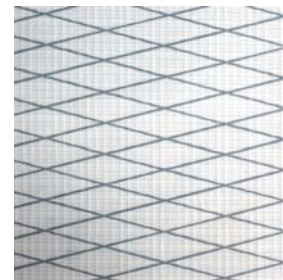
Working in collaboration with Dimension-Polyant and Technique Voiles, Jeanneau has developed a new Mylar Taffetas X-Grid fabric for the Performance range.

The triradial construction of the sail contributes to superior shape holding, but other forces can act on the individual panels. By using a specially-designed X-Grid® of fibres angled at 6° laminated into the fabric, better bias control can be achieved which makes the sail more resistant to deformation and aging.

The performance of these new fabrics provides a more stable sail cloth that is lighter, easier to handle, with better shape control over time.

These new Performance sails are easily recognisable; they include a taffeta laminate that is light grey that gives them a very “hi-tech” look.

- 1 - Protective taffeta
- 2 - Polyester film
- 3 - X-Grid® fibres
- 4 - Polyester scrim



## SPECIFICATIONS

### SELF-TACKING FURLING JIB :

- Mylar/taffeta X-Grid fabric in grey colour
- Triradial cut
- UV-stabilised thread
- Webbing strap at head
- Bolt-rope for furler
- Anti-UV protection on foot and leech
- Draft stripe
- Radial reinforcements
- Webbing strap at tack
- Adjustable sheet attachment
- Adjustable leech line
- Replaces the standard genoa
- Requires deck hardware for self-tacking jib
- **Area : 28,2 m<sup>2</sup>**



## ADVANTAGES

- Hands-free tacking
- Great up-wind performance
- Perfect for short-handed sailing

## PERFORMANCE SAILS : MYLAR TAFFETAS X-GRID

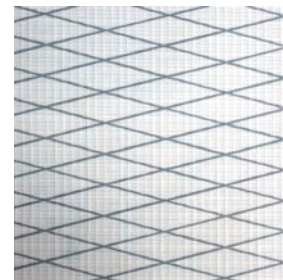
Working in collaboration with Dimension-Polyant and Technique Voiles, Jeanneau has developed a new Mylar Taffetas X-Grid fabric for the Performance range.

The triradial construction of the sail contributes to superior shape holding, but other forces can act on the individual panels. By using a specially-designed X-Grid® of fibres angled at 6° laminated into the fabric, better bias control can be achieved which makes the sail more resistant to deformation and aging.

The performance of these new fabrics provides a more stable sail cloth that is lighter, easier to handle, with better shape control over time.

These new Performance sails are easily recognisable; they include a taffeta laminate that is light grey that gives them a very “hi-tech” look.

- 1 - Protective taffeta
- 2 - Polyester film
- 3 - X-Grid® fibres
- 4 - Polyester scrim



## SPECIFICATIONS

### CODE 0

#### Selden continuous line furler :

- Laminate Mylar/Aramid X-Grid fabric in light grey
- Triradial cut
- Anti twist luff cord
- UV-stabilised thread
- Straps for sheet attachment
- Adjustable leech and foot lines
- Requires rigging for asymmetrical spinnaker / Code 0
- **Area : 70 m<sup>2</sup>**



## ADVANTAGES

- A light wind sail designed for use between 60° and 120°
- Continue to sail when others have given up and turned on the motor
- Continuous line furler allows easy deployment and furling from the cockpit
- Ideal addition to boats with small overlapping jibs and self-tacking jibs



## CODE 0: MYLAR ARAMID X-GRID

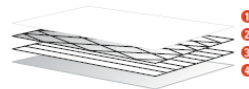
For the development of the new Code 0 sails on a continuous line furler, Jeanneau selected a sail cloth that is perfectly adapted for use in light airs. Highly resistant, light weight and able to be furled, the Mylar Aramid X-Grid has a light grey finish that is translucent.

Unidirectional Aramid fibres, vacuum-bagged together between two polyester films, provide an unequalled resistance to weight ratio. This ultra light sail is easy to handle and fills with the slightest puff of wind. Adding the X-Grid® polyester fibres at a 6° angle provides excellent bias control in all directions and improves sail shaping, as well as, resistance to tearing.

Lastly, a taffeta is added to the external laminate of the sail cloth to protect the sail from ultraviolet light and wear during furling or storage.

The Code 0 sails from Jeanneau integrate these high-performance materials to meet the exacting demands of our owners. In addition to these high-end materials, the look of these sails sets Jeanneau apart.

- 1 - Polyester film
- 2 - X-Grid® fibres
- 3 - Unidirectional Aramid fibres
- 4 - Protective taffeta



SO409 - 07/2012





## WHAT IS 360 DOCKING?

- The 360 Docking system is a revolutionary propulsion system developed by Jeanneau and ZF Marine. This unique system allows easy and safe manoeuvring of a sailboat in tight quarters via a joystick mounted in the cockpit.
- 360 Docking: Docking made easy!

## DIFFERENT MODELS AVAILABLE:

- The 360 Docking system has been developed in several different sizes in order to adapt it to sailboats from 40 to 57':

**POD60 : 38' – 42'**  
**POD90 : 43' – 49'**  
**POD120 : 50' – 54'**  
**POD180 : 55' – 58'**



## HOW DOES IT WORK?

- The concept is simple: the engine is coupled with a pivoting sail drive, capable of rotating 360°.
- The joystick transmits the commands to a control box, which uses the autopilot to lock the helm. Then, a simple movement of the joystick controls the orientation and the thrust of the pod, as well as the bowthruster when moving sideways.
- You can vary throttle power with the joystick. You can also combine movements, like rotation and forward moment to turn and move forward at the same time.



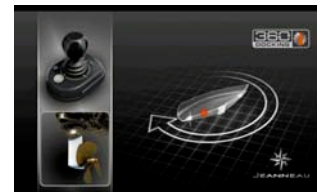
> Forward movement: saildrive facing aft



> Sideways movement: saildrive turns 90° and activates bowthruster



> Aft movement: saildrive turns 180°



> Rotation: saildrive turns 90° to pivot boat around axis

## UNIQUE FEATURES OF THE SYSTEM:

- **Sideway manoeuvring:** manoeuvre in ways never before possible
- **Easy and powerful rotation:** using the saildrive leg at 90°, the boat can be rotated easily and quickly using the main engine, which is much more powerful than the bowthruster.
- **Very powerful reverse gear:** both with throttle and joystick due to the fact that the sail drive turns around 180° so that the propeller is always facing "forward." This also means that folding propellers work very well with the system.
- **Ability to stop and adapt:** with the ability to move in any direction while applying variable power means that normal steerageway is not necessary for manoeuvring. The boat can be stopped, repositioned and moved at the touch of the joystick without having to do every manoeuvre at higher speeds. Safety and piece of mind.
- **Better visibility when manoeuvring:** most of our boats allow the helmsman to be standing when using the joystick so that he or she has a better view of the dock than if reaching down to use a traditionally-placed throttle control.
- **Comfort of an electronic throttle:** the regular throttle on the boat is electronic. This makes it easy to use.
- **Gearbox longevity:** since there is no reverse gear, the 360 Docking gearbox does not include any of the conical gears that typically wear out in standard gearboxes.

## FAQ :

- **Is this system available from other boat manufacturers?**  
The partnership between ZF Marine and the Groupe Beneteau means that only Jeanneau and Beneteau boats have access to this technology. Our exclusive agreement extends into 2014.
- **Can I use a folding propeller?**  
Yes, folding propellers work very well with the system because the main drawback of folding propellers is that they don't work in reverse, but since the drive always rotates to face forward to the direction you want to go, the folding propeller works efficiently, even in reverse. We recommend Flex-o-Fold propellers.
- **Can I use a feathering (Max-Prop) propeller?**  
No, there is no need to use a feathering propeller, as they are designed to rotate the blades when in reverse, so there is no clear advantage to installing these on a drive system with no reverse gear.
- **If, for some reason, there is a failure, can I rotate the saildrive manually?**  
Yes, it can be rotated back into position manually in case of failure.



## PRISMA PROCESS



Leader in vacuum bagging technology for the construction of racing boats, JTA developed an resin injection process applicable to the construction of cruising boats. By using advanced engineering, precisely positioned layers of glass fabric and mat and specially developed core materials, Jeanneau is able to mould a deck to exacting tolerances.

Jeanneau's leadership in this domain gives it a substantial advantage over its competitors and ensures unequalled quality to the customer.

This 21<sup>st</sup> century technology allows Jeanneau to manufacture complex fibreglass parts with:

- Perfect finish on both sides (no need for a counter mould)
- Reduced weight (providing the sailboat better stability/performance)
- Increased strength and rigidity of the piece (quality of lay-up)
- Reduction by 90% of VOC emissions (environmentally-friendly)
- Optimum working conditions for the production team (no contact with resins/catalysts)
- High quality parts (precise control of gelcoat, core materials and resin injection)

The deck of the Jeanneau 53 is the largest mass-produced injection fibreglass part in the world.

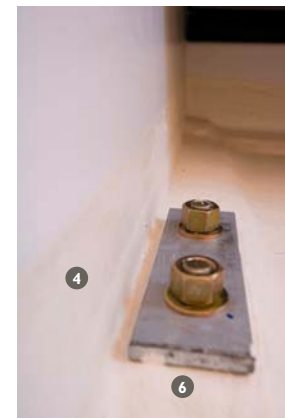


## COUNTER-MOULDING

### 3<sup>rd</sup> generation hull structure

Jeanneau has long been known for strong and seaworthy boats. Today the technology of boatbuilding has evolved, but our commitment to this tradition has not wavered. The Jeanneau 3<sup>rd</sup> Generation Hull Structure combines the latest in fiberglass technology with modern yacht design to deliver a structural reinforcement perfectly adapted to the demands of the offshore sailor.

- ❶ High-load zones cut-out for access to the hull
- ❷ Integrated repair area at aft end of keel
- ❸ Structure is precisely placed in the hull
- ❹ Glued and relaminated to the hull for strength
- ❺ Acts as a support for the floorboards
- ❻ Keel bolts located near vertical members and through counter mould and hull
- ❼ Limber holes at hull level for efficient drainage
- ❽ Counter mould remains below level of floorboards and is not visible



## ALPI WOOD - FINETEAKE

### SALES POINTS:

#### Environmental:

- Ayous (Triplochiton scleroxylon - Sterculiacées) trees in managed forests of indigenous hardwoods are selected and cut, with a constant care given towards long term preservation of natural resources.
- Teak and other soft rainforest woods often come from geopolitically sensitive regions and are not managed in a sustainable way.

#### Quality:

- These ALPI wood panels are substantially more expensive and reliable than standard marine plywood. They are used by top of the line furniture manufacturers, as well as many exclusive super-yacht builders (for example Azimut and Ferretti only use ALPI wood).
- Consistency of finish and colors throughout the boat.
- Elimination of “defects” in wood panels.

### Durability:

- Harder finish that is more resistant to humidity
- Better resistance to UV
- Easier repairs as veneer is tinted through and through so clear varnishes can be used



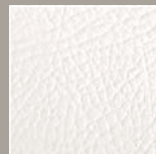
## Ambiance "MEDITERRANEO"

### SALOON

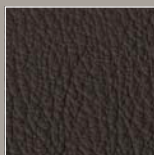


#### BACKRESTS & SEATS

► PVC Mediterraneo Old White



UPHOLSTERY leather / leatherette ► Chocolat



#### FLOOR

► Standard



► Option: Light oak



#### CURTAINS

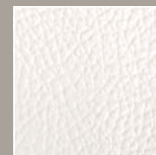
► Magnifico Pewter



### CABINS

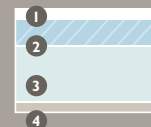
#### SEATS

► PVC Mediterraneo Old White



#### BEDS

► Premium mattress



- 1- Removable mattress cover fabric with Ultra-Fresh® is anti-microbial, anti-bacterial and non-allergenic
- 2- Top: 40mm of High-Resilience foam
- 3- Base: 80mm of high-density polyether foam
- 4- Breathable fabric

Infill cushion for convertible berth in GER White fabric



## Ambiance "METROM"

### SALOON

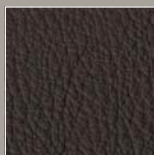


#### BACKRESTS & SEATS

► *Metrom écru*



**UPHOLSTERY** leather / leatherette ► *Chocolat*



#### FLOOR

► *Standard*



► *Option: Light oak*



#### CURTAINS

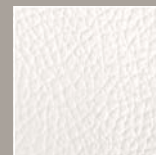
► *Magnifico Pewter*



### CABINS

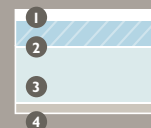
#### SEATS

► *PVC Mediterraneo Old White*



#### BEDS

► *Premium mattress*



- 1- Removable mattress cover fabric with Ultra-Fresh® is anti-microbial, anti-bacterial and non-allergenic
- 2- Top: 40mm of High-Resilience foam
- 3- Base: 80mm of high-density polyether foam
- 4- Breathable fabric

Infill cushion for convertible berth in GER White fabric

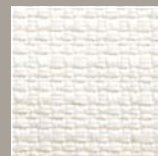
## Ambiance "CLASSIC"

### SALOON



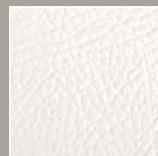
#### BACKRESTS

► GER white

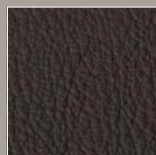


#### SEATS

► PVC Mediterraneo Old White



UPHOLSTERY leather / leatherette ► Chocolat



#### FLOOR

► Standard



► Option: Light oak



#### CURTAINS

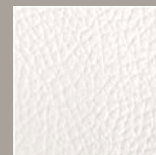
► Magnifico Pewter



### CABINS

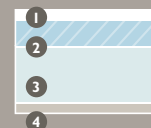
#### SEATS

► PVC Mediterraneo Old White



#### BEDS

► Premium mattress



1- Removable mattress cover fabric with Ultra-Fresh® is anti-microbial, anti-bacterial and non-allergenic

2- Top: 40mm of High-Resilience foam

3- Base: 80mm of high-density polyether foam

4- Breathable fabric

Infill cushion for convertible berth in GER White fabric

## Ambiance "LOFT"

### SALOON



#### BACKRESTS

► *Mega chinchilla*

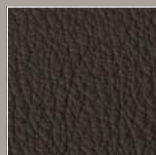


#### SEATS

► *Tudor graphite*



UPHOLSTERY leather /  
leatherette ► *Chocolat*



#### FLOOR

► *Standard*



► *Option: Light oak*



#### CURTAINS

► *Magnifico Pewter*

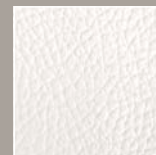


Infill cushion for convertible berth in GER White fabric

### CABINS

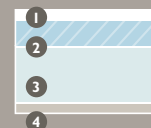
#### SEATS

► *PVC Mediterraneo  
Old White*



#### BEDS

► *Premium mattress*



- 1- Removable mattress cover fabric with Ultra-Fresh® is anti-microbial, anti-bacterial and non-allergenic
- 2- Top: 40mm of High-Resilience foam
- 3- Base: 80mm of high-density polyether foam
- 4- Breathable fabric

## EXTERIOR UPHOLSTERY

### SPRAYHOOD PROTECTION BIMINI / LAZY BAG



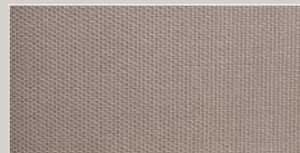
► Sunbrella taupe



### COCKPIT CUSHIONS



► Sunbrella sling taupe



# SIMRAD

## Trim Level Preference - CHART TABLE

### Simrad SonicHub

Simrad product code: 000-10143-001



### SonicHub Remote

Simrad product code:  
000-10561-001



## Electronic Pack - HELM STATIONS

DTS800 Speed/  
Depth/Temp  
Transducer  
Simrad product code:  
22098552



### IS40

Simrad product code:  
000-10931-001



### IS40

Simrad product code:  
000-10931-001



### 508 Wind Sensor

Simrad product code:  
000-10570-001



## Optional Display COCKPIT

### NSS8 MFD MultiFunction Display

- 8" LED touchscreen color display
- Navionics regional cartography included
- Simrad P/N: 000-10440-001



## Optional Wifi

### Wifi - Wireless Module

- Free iPad application to control the MFD available in Q1 2013
- Simrad product code:  
000-10933-001



## Optional Radar

### Broadband Radar 4G

Simrad product code:  
000-10420-001



## Optional Remote

### WR20 Wireless Remote

Simrad product code:  
WR20



## Optional Autopilot

### Autopilot System

Simrad product codes (without Pump):  
22097091 / 22090195 / 22014286



### IS40 Pilot Controller

Simrad product code:  
000-10932-001



OPTIONS



July 2012 - Non contractual document