

# SEALINE

T SERIES - 2012

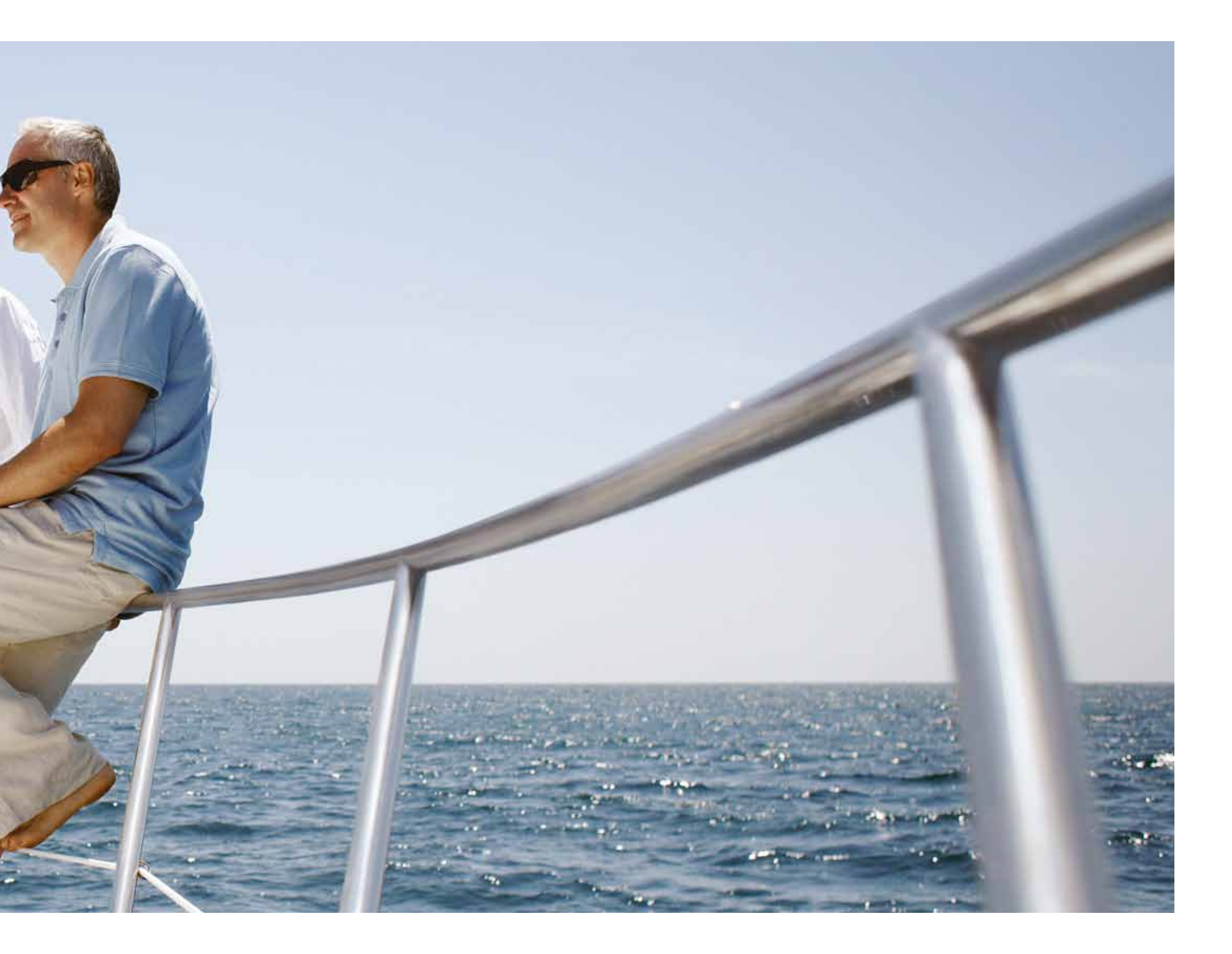
CELEBRATING

40  
1972  
YEARS

SHARE THE ADVENTURE

"It was the longest journey we'd ever set off on. But once we'd arrived, we'd never felt so close."





40 YEARS OF ADVENTURE



CELEBRATING  
**40**  
1972  
YEARS





Warming sunshine.

Cooling breezes.

Atlantic rollers.

Glassy calm.

Clear blue skies.

Pure, white clouds.

Challenging straits.

Wide open freedom.

Bustling harbours.

Sleepy towns.

Undiscovered coves.

Favourite haunts.

A billion stars.

A candlelit meal.

The anticipation of setting off.

The celebration of arrival.

Tying up.

Winding down.

There's a whole world out there.

Explore it with Sealine.

With your family.

With your friends.

With your soul mate.

Life is short,

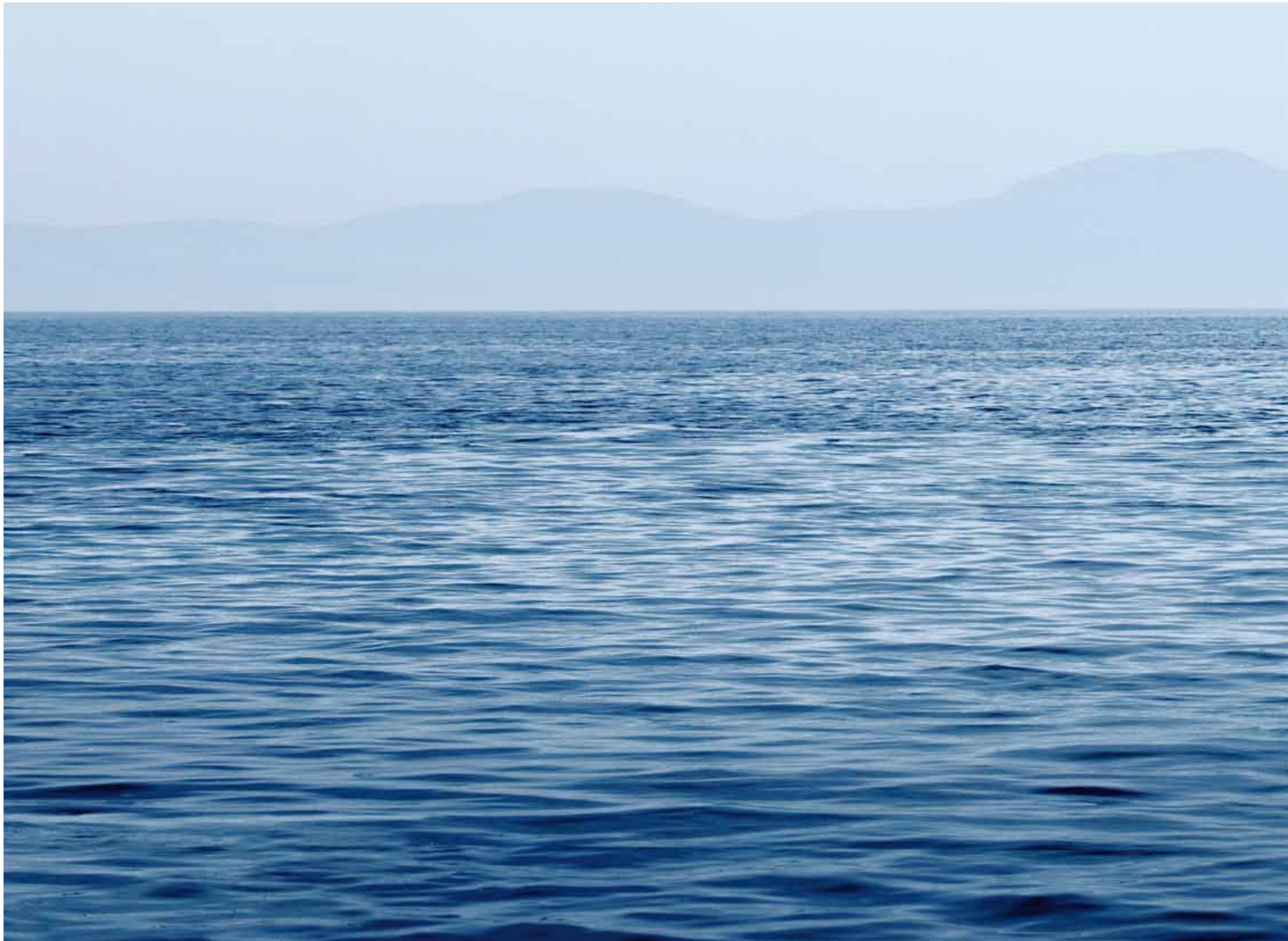
but the oceans are endless.

Share the adventure.



# Welcome to the family.

Since our founder Tom Murrant set out to build the ideal boat for his family over 40 years ago, Sealine has always been about creating perfect, sociable experiences on water aboard distinctive but safe, seaworthy craft. This appreciation for coming together is reflected in the community that has gathered around our boats with a thriving owners' club sharing tips, tales and suggestions for journeys. And from the camaraderie of regular flotillas to our involvement with events such as the Big Splash, an annual celebration of power boating, our desire to bring people together is as strong as ever. Rest assured, this defining characteristic will continue as our current family of boats grows with eight new distinctive models in the pipeline. Come aboard and share the adventure with those that matter to you. With confidence.







# T60 AURA

Light and space are two of the true pleasures of being at sea.  
Welcome aboard the T60 Aura.

At Sealine we have established a long tradition of craftsmanship and innovation. Now, with the T60 Aura we have collaborated with the renowned Studio Conran to bring you a high performance motor-yacht featuring the best of modern interior design.

With its new rearward facing radar arch, newly refined signature slanting portholes and strong flowing lines, the T60 Aura has a sleek but solid presence. A feeling taken even further by the extending bathing platform, which at the touch of a button lets you create yet more space in the cockpit.

Within the T60 Aura you will discover a harmonious balance of opposites: style and function; comfort and practicality; simplicity and technology. Here aesthetic beauty and luxury are equally as important as performance, safety and convenience.

Natural oaks, light finishes and furnishings throughout create a sanctuary helping to bring the outside in. The experience is heightened by long clean lines and floating, linear forms redefining traditional spaces and blurring boundaries to create an open-plan interior that allows you to enjoy an airy, luxurious environment.

Finding your own space is one of the greatest joys in life. Explore the T60 Aura.



On entering the cockpit, the new layout creates flow and visual space around you. The starboard galley runs seamlessly up to the TV unit, while contrast is formed between the smoked and natural oak stairs and the L-shaped leather sofa.

Touches of classic Sealine craftsmanship are all around you such as the herringbone grain on the folding dining table becoming a beautiful diamond pattern when fully open. The deck has practical features such as a top loading freezer and integrated crockery and cutlery drawers, while the helm is a mix of ergonomic functionality, linear simplicity and comfort.





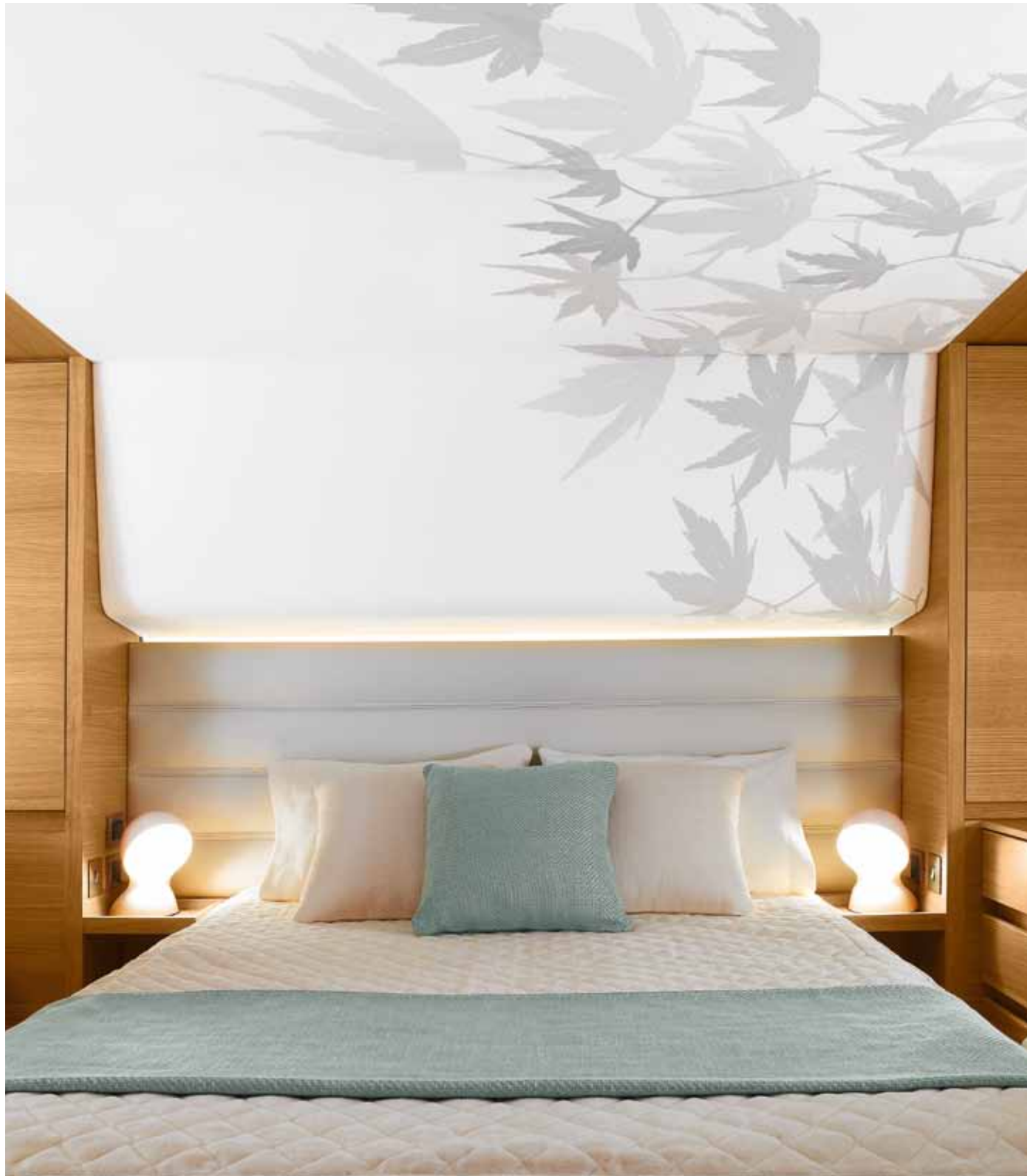




The Studio Conran influence can be truly seen in the master cabin. There's an air of calm and peace as you take in the sense of space and headroom.

The Japanese maple wall feature contrasts with the whites, natural oaks and the padded leather headboard creating a memorable dynamic. It's a place where style meets convenience and comfort, with an array of storage, a well thought out beauty area with sink and folding vanity, built-in leather seating, 26 inch TV screen and a generous en-suite.

As always, light is key, flooding in through the distinctive slanted portholes flanking the walk-around double bed.







The themes of nature, light and space continue throughout. The feeling of softness and warmth is balanced by the order and logic of straight lines.



Cleverly designed heads continue the relaxed feel with natural oak and Corian®. Making a stay in either the spacious forward VIP cabin or twin berth a comfortable and restful one.



ESTIMATED PERFORMANCE:  
ENGINE OPTIONS:

2 x Volvo Penta Diesel D13-900 900hp (1800hp total), conventional shaft	31/33 knots*
--	--------------

PRINCIPAL DIMENSIONS:

Overall length (inc. pulpit & handrails):	18.68m	61' 4"
Overall length (inc. SECS™ Extended):	19.29m	63' 3"
Beam:	4.87m	16' 0"
Height above waterline (incl mast):	5.93m	19' 5"
Draft (no load):	1.40m	4' 7"
Headroom:	1.95m	6' 5"
Fuel capacity:	2 x 1570 ltr	2 x 345 gal
Water capacity:	862 ltr	189 gal
Weight (dry):	25,800kg	25.38 tons



# T50

The challenge we set our design team for the creation of the T50 was that it should offer you a first-class experience. In every sense. Style. Living space. Performance. The result speaks for itself.

With its distinctive slanted, stainless steel portholes and purposeful radar arch, the T50 takes its inspiration from the cutting edge design of our flagship T60. But this is a vessel with its own personality and unique design features.

Take the hull for instance.

Created by world championship winning powerboat designer Ocke Mannerfelt together with our in-house design team, this is a unique approach to improving performance. By encouraging greater interaction between the propellers and the water, the hull increases propeller efficiency while it reduces water resistance making the T50 very fuel-efficient. Its design also delivers outstanding responsiveness allowing for nimble, yet stable, handling and an impressive turning circle.

Inside, you'll appreciate the equally impressive craftsmanship. The saloon's distinctive raised seating area is bathed in natural light thanks to additional sunroofs and a deck hatch located directly above the saloon table. With over 6ft 6ins of headroom in the saloon you'll find the sense of light and space around you is remarkable for a boat of this size. Your escape. An oasis furnished with Corian® worktops, oak flooring and walnut cabinetry to create a truly luxurious ambience.

A full beam master cabin, equal status guest cabin and a third Pullman cabin provide ample accommodation for you and your family or friends.

We believe this is the most complete 50-footer ever built. But as always, you need to experience it yourself.









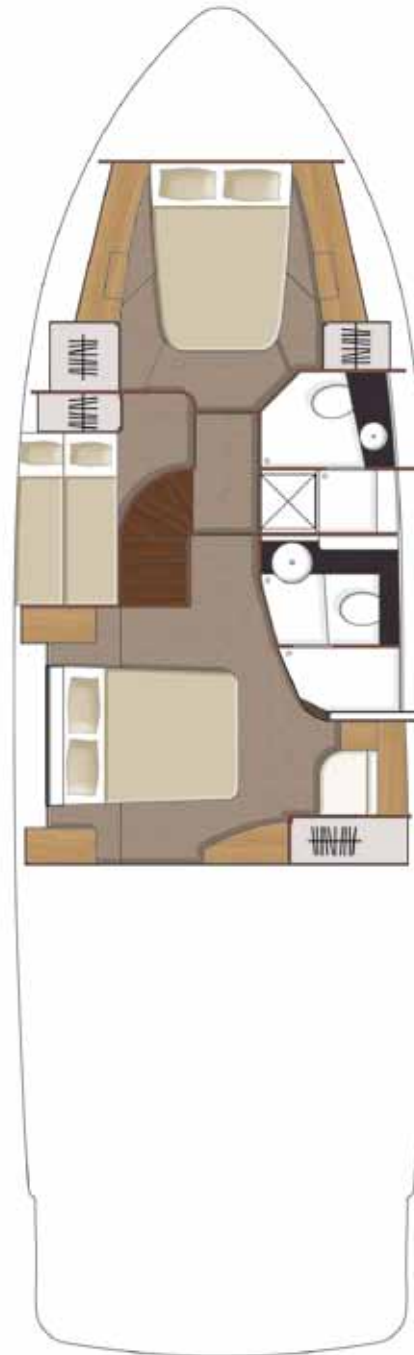
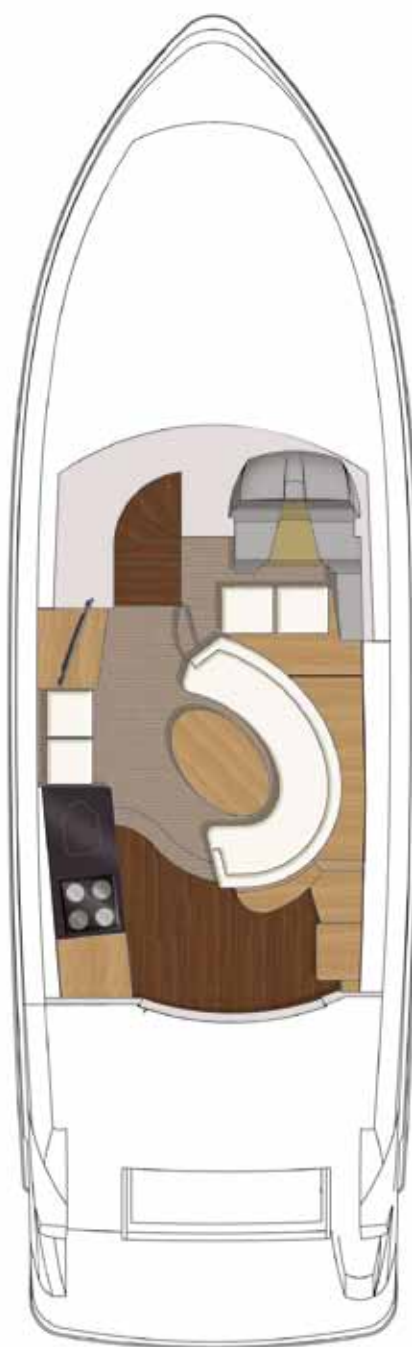
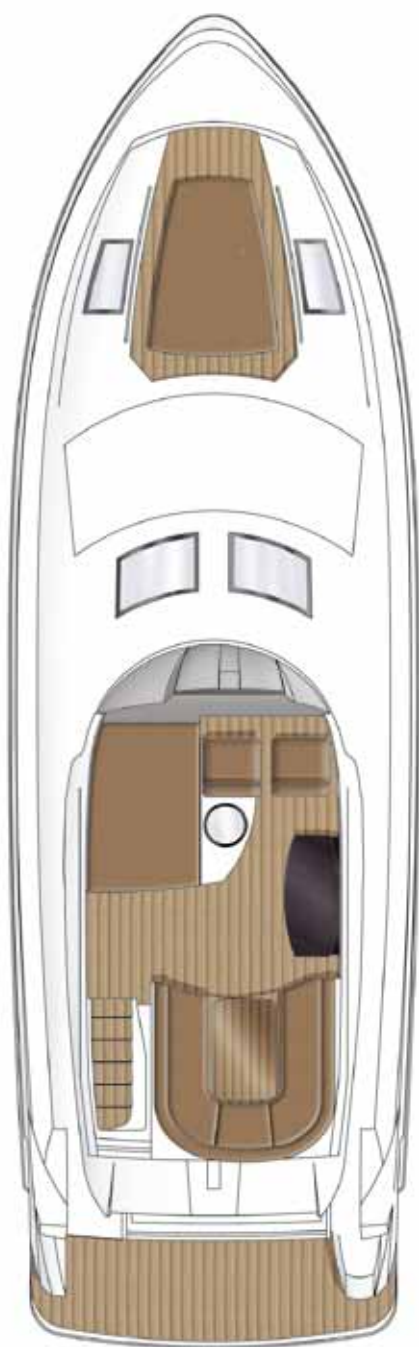


Resting in the full beam mid ship's master cabin you'll discover its considered detailing and ambience. Slanted portholes on both sides of the cabin provide a water level panoramic scene – after a restful night's sleep on board, it's a perfect way to start your day.









ESTIMATED PERFORMANCE:  
ENGINE OPTIONS:

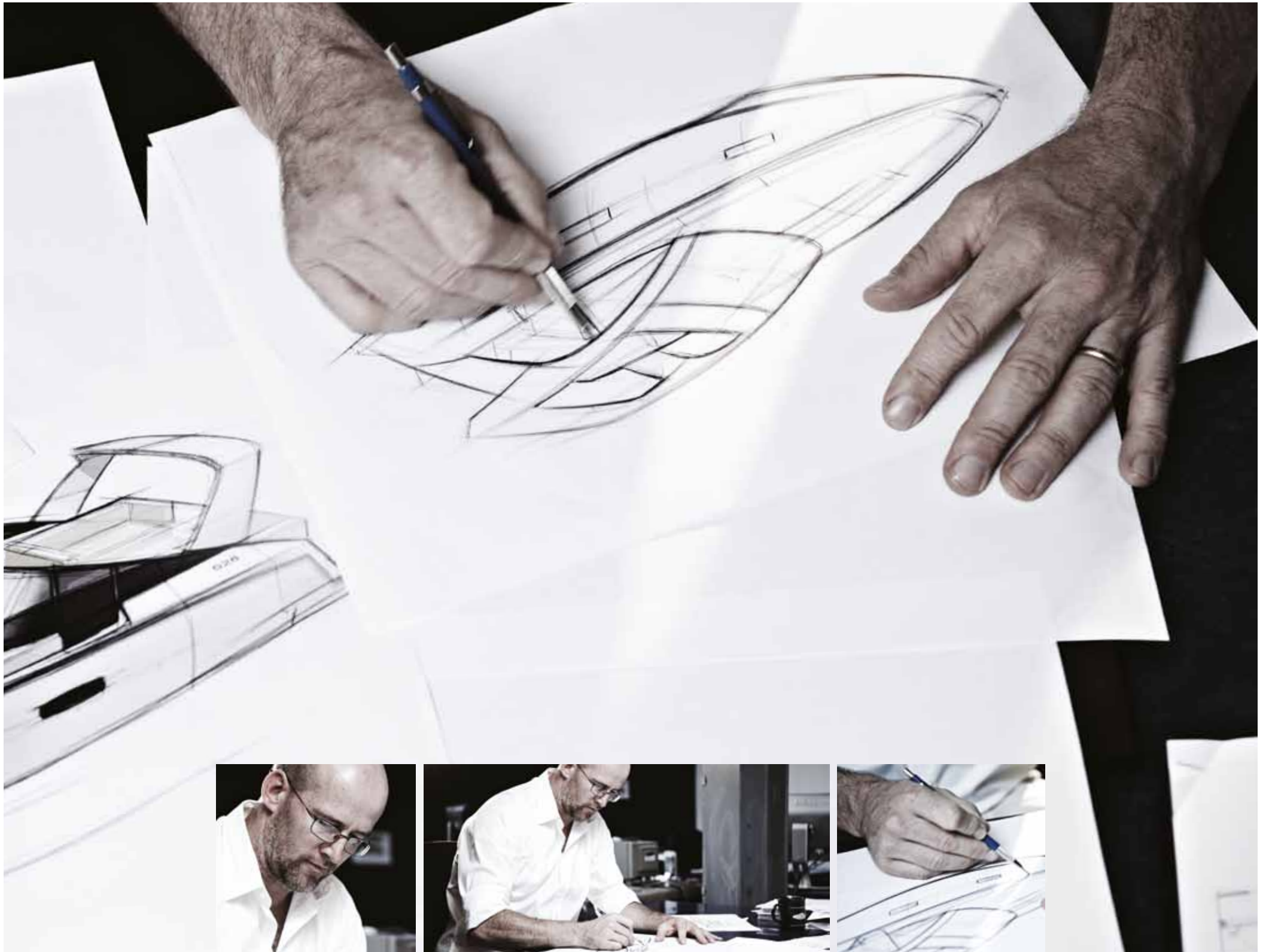
---

2 x Volvo Penta Diesel D9 575hp (1150hp total), conventional shaft	31/33 knots*
---	--------------

PRINCIPAL DIMENSIONS:

---

Overall length (inc. pulpit & handrails):	15.41m	50' 6"
Overall length (inc. SECS™ Extended):	16.0m	52' 6"
Beam:	4.61m	15' 2"
Height above waterline (inc. mast):	6.02m	21' 1"
Draft:	1.14m	3' 9"
Headroom:	1.98m	6' 6"
Fuel capacity:	2 x 1040 ltr	2 x 228 gal
Water capacity:	517 ltr	114 gal
Weight (dry):	17,446kg	17.16 tons



## Designing boats like everyone else is easy. Making waves takes a far more individual approach.

As an agile company that is less restricted, less prescriptive and more focused on innovation, we have been able to explore and ask 'why not?' for over 40 years.

Every aspect of our design has a reason so that nothing is superfluous. We blend the very best of modern British industrial design with our unique use of space and light. Crisp, linear lines, freshness and unrivalled connectivity creating stylish, comfortable sanctuaries that live in the real world.

The confidence we hold in our approach to designing and building boats like no other is clear to see. From the SC35 turning heads to the F46 and F42 revolutionising flybridge design to the C48 taking our innovative use of space to new heights.

But this design ambition cannot be achieved working in isolation. Inspiration comes from all around, whether it is a classic car that broke the rules, or the forms of nature shaped by time. Just as

importantly, we talk to customers. And listen. Our Design Director, Carsten Astheimer, has embarked on tours to talk with Sealine customers at length, while his team visits marinas to gain even greater insight into the views of a wider audience of boat owners on styling, usage, what you like, and equally, what you don't. Understanding that is further strengthened by the fact that many of us here are keen boaters.

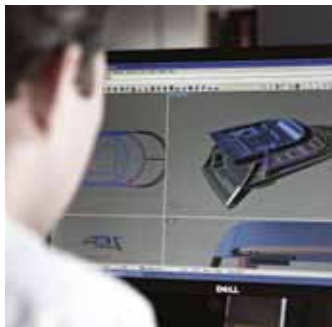
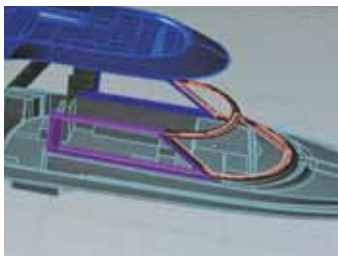
Above all, the creation of a Sealine is about true partnership and collaboration. Each boat design begins to take shape on the computer of Richard Crocker, our Senior Naval Architect with over 20 years experience. From here, the combined talents of Sealine's team of engineering and product development experts will evolve the design to fulfil both form and function under Richard's careful direction. It's a holistic process, undertaken to predetermined design and quality standards to produce a cruising boat that goes beyond convention whilst instilling confidence.

A perfect example of design vision and engineering prowess coming together can be seen on board the F46, F42 and new C48 in the daring geometry of the stunning wraparound windscreen. By adopting an unprecedented approach to boat design, adopting revolutionary techniques and even calling on the expertise of aerospace experts, the impossible became possible. A windscreen with the largest possible facade, giving unrivalled panoramic visibility from the lower helm.

Pushing boundaries has always been the driving force for the Sealine design. And the journey has only just begun.

*'We are looking very much to the future: pushing nautical design boundaries, but with every line and shape having a rationale behind it.'*

Carsten Astheimer, Design Director.





## Boats built on confidence.

Becoming a Sealine boat is a far from easy process with every conceivable aspect analysed, scrutinised and tested – in the virtual world, and the real one.

Before the boat is even built, our advanced finite element analysis technology enables us to carry out a full structural analysis of the hull itself, as well as all supporting structures and component parts; from fuel tanks to backrests and guardrails. While computational fluid dynamic modelling determines exactly how the boat will handle, how spray will deflect from the hull and how the breeze will flow over the decks whilst underway to ensure a blend of efficiency and exhilaration.

In the Sealine Product Validation Laboratory, years vanish in days as we undertake lifespan endurance analysis and quality assessments. Metal components are assessed as 10 years of use is compressed into just 21 days under the corrosive salty mist of the humidity chamber. Gel coat samples endure a year's worth of equatorial

sunlight in just 10 weeks to determine resistance to the effects of solar exposure. Test engineers have exerted hundreds of kilograms of pressure on stainless steel handrails and backrests to ensure their tensile strength. We even drop a 28-gram ball bearing from 2 metres onto sample pieces of teak flooring, so we know that if you drop your cutlery, there's no need to worry.

Our finished boats face, and overcome, countless challenges including 960 sub-assembly production line checks, 600 hull assembly line item checks, 308 engine and electrical system checks, two days of pool testing, a full final boat audit of 215 tests and on to 500 hours of sea trials. But even before it leaves the factory, your boat will have been continuously drenched for 12 hours in a special atomisation test that lasts six times longer than the industry norm.

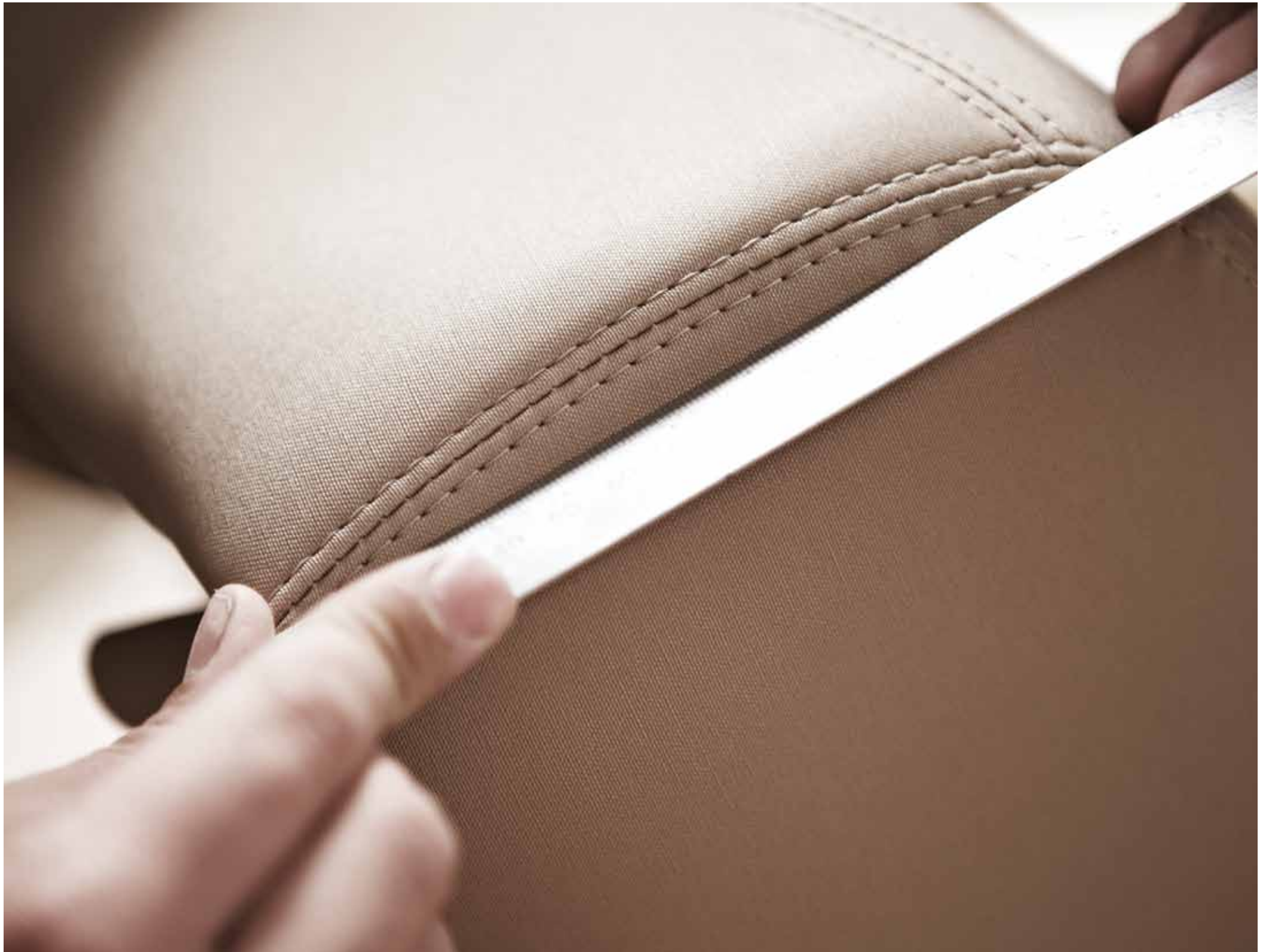
Once these punishing tests are complete, our boats have to come through equally daunting challenges out at sea. At our Sea Trial Centre all new models are rigorously tested. Frequently, a Sealine

boat will be put through a whole year's worth of typical usage in just three months. These demanding trials are conducted by our own master yachtsman, a seasoned veteran who, with over 10,000 hours at sea aboard Sealine boats, helps to validate design and build.

We even go to the extreme of taking our boats out in storms of up to gale force 8 with significant wave heights up to 4 metres. We do this for a minimum of eight hours so that you know our boats are solid enough to get you back should you be caught offshore.

In short, we test every component of every model to limits that you will simply never reach. Integrity isn't simply placed at the centre of our business. It's built into the very heart of our boats.





## We put two things into your boat: heart and soul.

Blending painstaking precision and 40 years of craftsmanship, from the smallest stitching detail on the saloon scatter cushions to curving handrails to the galley worktop, Sealine produces many of its furniture and fittings as part of its manufacturing process. This may be a longstanding tradition for the company, but that hasn't stopped it incorporating modern materials and techniques to set new standards in quality. We were the first small boat builder, for instance, to introduce a complete matt wood finish with our use of American walnut.

Sealine designs possess an unmistakably distinctive nature; ultimately simple and in every sense functional, yet at the same time, enticingly stylish. Nevertheless, our aesthetic decisions are

always underpinned by our demand for quality and practicality. Our materials can only be selected once they have passed a number of industry standard and in-house tests. We insist on only using antimicrobial and antifungal fabrics, and choose only fire-resistant upholstery. We stain test and abrade every thread and fabric 10,000 times; that's equivalent to 10 years' use onboard. The material for our sunshades is monitored for its screening ability using thermal imaging cameras. And no fewer than 12 scrupulous steps are taken to source one piece of wood and transform it into a finished piece, with every stage quality assessed.

Nothing is incidental. Flooring, for instance, is grain matched across an entire expanse of floor. Any joints are carefully mapped

out so that every last millimetre creates a perfect whole. When you walk across the floor of a Sealine, it quite simply has to be flawless.

Our dedicated craftsmen and women work together as one team to create an exceptional experience. This is what a Sealine is all about.





HEAD OFFICE:

Sealine International Limited  
Whitehouse Road,  
Kidderminster,  
Worcestershire  
DY10 1HT  
England  
Tel: +44 (0) 1562 749100  
Fax: +44 (0) 1562 747709  
Email: [info@sealine.com](mailto:info@sealine.com)  
Web: [www.sealine.com](http://www.sealine.com)



Authorised Dealer



\*All performance figures are given in good faith and are intended as an indication. These figures cannot be guaranteed as top speed in particular is affected by the cleanliness of the hull, conditions of the propellers, weight carried and air/sea temperatures. Sealine International reserve the right to change specifications in line with the company policy of improvement through research and development. Errors and omissions excepted. Models shown in this brochure may include additional cost options that are not part of the standard specification. Accessories shown are for illustrative purposes only and are not included in the purchase price. Please check with your dealer for a full list of inclusions.

