



**MERCURY**  
FOURSTROKE

New 150hp  
**MERCURY**  
FourStroke

# 150

## **THE ULTIMATE 150 FOURSTROKE**

Tough enough for the most extreme conditions, yet compact enough for fuel efficient performance

### **100% Marine**

70 years of the world's best marine engineering, build and marine power behind it. Mercury's heritage of leading edge technology, performance, fuel economy and reliability. Standards that once again surpass industry and consumer expectations.





## The Ultimate 150hp FourStroke

The innovation behind this 150hp FourStroke has come directly from you our customer, after extensive feedback on our products and global surveys.

### We've delivered

- FourStroke Technology for maximum fuel economy and smoothness
- Large Displacement for "out of the hole" performance
- Compact and lowest weight in design for better hull manoeuvrability
- Fewer moving parts for less friction and greater reliability
- Quiet operation making it easy to converse
- An outboard that is fully tested in all conditions for all round performance
- The only outboard that comes with a 3 year Corrosion Warranty
- More Stainless steel for longevity
- Best in class Battery Charging System for longer battery life

**The most compact, lowest weight, most durable 150hp FourStroke outboard the world has ever seen. Extremely versatile in single or twin applications.**

## Highest Displacement in its class

### Durability & Superior Performance

Higher displacement means less work from the engine to produce torque and horsepower. More traditional FourStrokes take twice as long to perform the same cylinder operations (intake, compression, ignition, and exhaust) as TwoStrokes do. The new Mercury 150hp FourStroke is built to develop loads of torque at a stress level that will ensure higher durability than any other 150 horsepower outboard. Higher displacement simply means more torque and horsepower. The higher the torque, the faster the holeshot and acceleration. And more power equals faster top speeds. The Mercury 150 FourStroke is the only 150 FourStroke to have a torque curve rivaling the strongest 2-Stroke.

150hp 4S	Mercury	Suzuki	Yamaha	Honda
Displacement	183ci 3000cc	174.5ci 2867cc	162.2ci 2670cc	144ci 2354cc
Bore & Stroke	102x92(mm)	97x97(mm)	94x96(mm)	87x99(mm)

### Compact Design

The lowest weight 150 FourStroke on the planet!

What seems like magic is simply Mercury Marine doing what it does best – creating game-changing, incomparable engines that elevate boating to the next level.

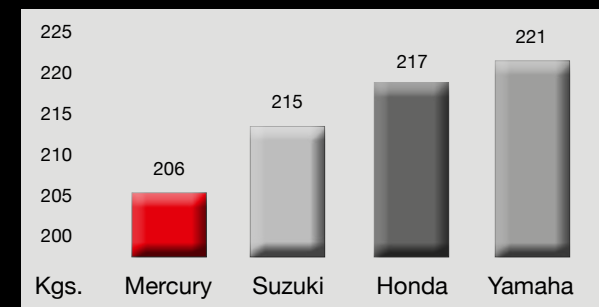
### The new Mercury 150hp FourStroke has:

- Almost 15% fewer parts than Suzuki's 150 Four stroke
- Almost 18 percent fewer parts than Yamaha 150 hp Four stroke engine.

A smaller compact design and a lighter weight reduces the overall package weight of the boat, which, depending on the hull, will improve performance and efficiency.

The new Mercury 150hp FourStroke is 206kgs and is only 11kgs heavier than the 150 OptiMax (at 196kgs). Comparisons below are based on competitors' published weights for 20" (L) models.

### 150hp Weight Comparison









# 150

## THE ULTIMATE 150 FOURSTROKE

Tough enough for the most extreme conditions, yet compact enough for fuel efficient performance

### Sound Management

As part of its world-class sound-management technology, the Mercury 150hp FourStroke features a special idle exhaust relief system:

- Simple baffle design
- Low pass acoustic filter to weaken high frequency exhaust noise at idle speeds

Quiet operation at low speeds makes it easier to converse while in the boat or during a long day of trolling.



### Vibration Management System

The Mercury 150hp FourStroke incorporates an exclusive and unique Focused Mount System which is 22 percent heavier and tougher than those found on our competitor's 150hp outboards.

The upper mounts are at a much wider 45-degree angle from the engine's centre of gravity and in a location where they can operate under ambient temperature conditions rather than under the higher heat radiating from the immediate powerhead area.

Placing mounts farther away from the powerhead significantly reduces mount temperature and increases mount durability. Angling the mounts reduces vibration transmitted to the boat significantly, at all points in the power band, but especially at transient points from a fast idle to where the boat is coming on plane.

Higher durability and significantly reduced vibration mean a more pleasurable boating experience all round, making the Mercury 150hp FourStroke the lowest-weight 150 four stroke anywhere.

### Maintenance-Free Valve Train

Unlike many competitors' four-strokes, Mercury's durable valve train stays maintenance-free for life, lowering cost of ownership and giving you more time in the water. It features the race proven "Roller Finger Followers" and oversized valves, offering a more reliable, more efficient, power design.

### Best in Class Battery Charging System

The Mercury 150hp FourStroke marine-hardened "on-demand" alternator is a 60amp (756 Watt) high output external unit.

#### 60 Amp (756 Watt) High Output Alternator

- Belt Driven (less heat & weight)
- On demand (provides power only when needed)
- Fully regulated at 14.2 volts
- Hard anodized for corrosion durability

### Alternator Comparison

Mercury	Suzuki	Yamaha	Honda
60 Amp	44 Amp	37 Amp	51 Amp

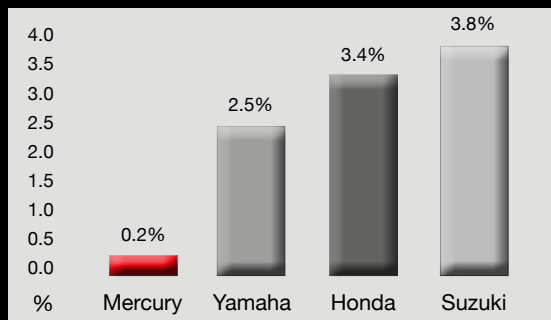
## ***Class-leading Corrosion Resistance***

Saltwater is a marine engine's worst nightmare. To survive wide-ranging salinity, temperature, and humidity levels requires expert marine understanding, technology, cost, and equipment. No other company invests as much time, energy, and dollars in their products to deliver an engine with the long-term corrosion fighting characteristics. The formula is melted at our foundry in Fond Du Lac, Wisconsin, USA.

True Corrosion Protection starts with the alloys. There is a big difference in metals and how they react in saltwater. That difference can be the choice between years of boating fun or costly corrosion failures and high labour bills.

We call it XK360. Extremely low copper content aluminium-silicon alloy means Mercury Marine's XK360 alloy is not just the industry leader, it is the industry standard.

## ***% Copper Content in Aluminium Alloy***



## ***Tough Warranties***

Engines that are built tough, with a warranty to match. No other manufacturer offers:

- A 3 year Corrosion Warranty.\*
- A leading 3+2= 5 year Factory backed warranty.\*
- Support from the largest network of Specialist Marine Dealers in Australasia.

All recreation outboards from the 300hp to a 2.5hp, receive a fully transferable warranty. A warranty that's supported by the strength and service expertise of one of the largest dealer networks in the country. Simply have your engine serviced at an Authorised Service Centre at the recommended routine servicing/maintenance requirements set by Mercury Marine, and you're covered by an additional 2-year factory backed warranty on top of the first 3 years. That's a full 5 years of warranty coverage.

## ***SmartStart System***

Instead of turning the ignition key to the "start" position and holding it until the engine starts, the operator simply turns the key and immediately releases it. The Mercury SmartCraft SmartStart system will automatically continue turning the engine until it starts. This feature is also available with the accessory push button start/stop panels. With the new 150 FourStroke, it is impossible to grind the starter gear or engage the starter motor in the event the operator attempts to start the engine while it is already running.

## ***The Mercury 150 Advantage***

### **Over Yamaha**

- 15 kgs lighter (Improved Hull Manoeuvrability)
- Larger displacement (Performance)
- 71% More Charge (60 Amp Alternator vs. 37 Amp)
- Maintenance Free Valve Train vs. DOHC
- Exclusive Oil Cooler vs. None
- Focused Mount System vs. Conventional Mount
- 18% Fewer Parts

### **Over Suzuki**

- 10 kgs lighter (Improved Hull Manoeuvrability)
- Larger displacement (Performance)
- 36% More Charge (60 Amp Alternator vs. 44 Amp)
- Maintenance Free Valve Train vs. DOHC
- Exclusive Oil Cooler vs. None
- Focused Mount System vs. Conventional Mount
- 15% Fewer Parts

### **Over Honda**

- 11 kgs lighter (Improved Hull Manoeuvrability)
- 27% more displacement (Performance)
- 18% More Charge (60 Amp Alternator vs. 51 Amp)
- Maintenance Free Valve Train vs. SOHC
- Focused Mount System vs. Non-Linear Mounts

## ***Specifications***

HP/kW @ Prop	150 / 110
Max RPM (WOT)	5000 - 6000
Cylinders	4 (in-line) 8 Valve SOHC
Displacement (CID/cc)	183 / 3000
Bore X Stroke (in/mm)	4.0 x 3.6 / 102 x 92
Induction System	Performance - Tuned Scroll Intake Manifold
Ignition	SmartCraft ECM digital inductive
Fuel System	Multi-Port Electronic Fuel Injection (EFI)
Alternator Amp/Watt	60 amp / 756 watt belt-driven
Cooling System	Water-Cooled w/ thermostat
Starting	SmartStart Electric (turn-key)
Gear Ratio	1.92:1
Gear Shift	F-N-R
Propeller	Consult Dealer Propeller Guide
Steering	Mechanical Cable Conventional Hydraulic (Opt) Mercury Power Steering Dual (Opt) Big Tiller P/S Handle Kit (Opt)
Trim System	SmartCraft Programmable
Exhaust System	Through Prop
Recommended Oil	Mercury 4-Stroke Outboard Oil
Fuel/Ethanol Tolerance	91 octane/up to 10% Ethanol
Operator Warning System	SmartCraft Engine Guardian
Warranty*	3 + 2 = 5 Years 3 Year Corrosion
SmartCraft Technology	Yes
Shaft Length (in/mm)	20/508 25/636
Dry Weight (lbs/kg)	455/206**

\*\*Lightest model available



© 2011 Mercury Marine. Mercury Marine Outboards, Verado are registered trademarks. Please note: Mercury Marine continuously explores means to improve the products it designs, manufactures and distributes. Changes to the specifications of its engines, boats and accessories are ongoing. Every effort is made to produce sales and service literature that is current. This brochure should not be regarded as a precise guide to the latest specifications. This brochure is also not an offer for sales of any particular engine, boat or accessories. Distributors and dealers are not agents of Mercury Marine and they have no authority to bind Mercury Marine by any express undertaking or representation, including but not limited to representations of a product sales, application or service nature.

\* For Australia and New Zealand terms and conditions apply - recreational use only.