

Sun Odyssey

41<sup>DS</sup>

**NEW**



## S U M M A R Y

- > SPECIFICATIONS
- > KEY POINTS
- > EXTERIOR
- > INTERIOR
- > SAILS
- > 360 DOCKING
- > CONSTRUCTION
- > UPHOLSTERY
- > ELECTRONIC PACKAGES



**JEANNEAU**



## PROVISIONAL TECHNICAL INFORMATION

Overall length: ..... 12,34 m / 40' 5"  
 Hull length: ..... 11,99 m / 39' 4"  
 Waterline length: ..... 11,00 m / 36' 1"  
 Beam: ..... 3,99 m / 13' 1"

Displacement: ..... 7.860 kg / 17.328 lbs  
 Standard keel draft: ..... 2,10 m / 6' 10"  
 Shoal draft: ..... 1,55 m / 5' 1"

Cabins: ..... 2  
 Berths: ..... 4 + 2

Engine power: ..... Yanmar 40 Hp / 29 Kw  
 Fuel capacity: ..... 200 l / 53 US gal  
 Water capacity: ..... 330 l / 87 US gal  
 Cold capacity: ..... 185 l / 49 US gal

Sail area:  
 - Standard ..... 66 m<sup>2</sup> / 710 Sq ft

CE Category: ..... A7 / B8 / C10  
 Designers: ..... Franck Darnet - Flahault Design  
 ..... Philippe Briand - Jeanneau Design

## VERSIONS • LAYOUTS

Compatible 360 Docking – POD60

Fixed keel version  
 Shoal draft version

2 cabins / 2 heads

## EXTERIOR

- **Sleek deck lines and spacious cockpit:** flush hatches, twin helm design, long cockpit, innovative cockpit table, easy access transom.
- **Modern hull and sail plan:** a hard chine on the Philippe Briand designed hull, high-aspect ratio rig with 106% or self-tacking jib available, sheets lead back to the secondary winches

## PORTRAIT OF FRANCK DARNET



**"My life has always been guided by two passions: design and the sea."**

The art of space:

We create bright, spacious interiors, inviting living areas for recreation and relaxation.

Interior volumes must be wide and open to maximize visual space. A few centimetres, the degree of a curve or a recessed joint can change the perception of interior volume.

Franck Darnet Design develops innovative design concepts for yachts, fine residences and other projects of note. To date, over 1,300 yachts measuring from 15 to 56 metres have been designed by Franck Darnet Design.

## INTERIOR

### ***Stylish interior design by Franck Darnet & Olivier Flahault:***

- **Careful study of each detail ensures aesthetics, functionality, and most importantly, ergonomics:** meridienne sofa, innovative galley, touch-latch hardware, etc...
- **Rich materials:** Walnut wood, stainless steel, white-lacquered cabinets, light floorboards, leather upholstery, two-tone vinyl finish on ceiling panels, no other boat in its class offers this level of finish.
- **Interior volume unrivalled in her category:** The Sun Odyssey 41DS has comparable space and features often found on 45' boats

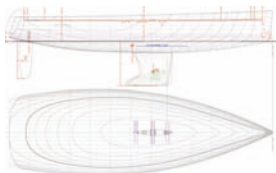
### ***Concept Deck Saloon :***

- **Light and ventilation throughout:** huge side windows, 10 opening ports and hatches, for exceptional ventilation, vertical sliding hatch for companionway
- **Raised saloon flooring allows** for superb visibility while standing. Multiple hull ports provide views of the water when seated, spacious cockpit and aft owner's cabin.
- **Unique aft owner's cabin:** extra large double berth, opening port in transom, private head with separate shower, plenty of storage compartments, seats to each side of the berth

## DECK - Modern and performance-oriented

Twin helms

**Hull with hard chine :**  
Philippe Briand hull from  
the Sun Odyssey 409 is  
seaworthy and powerful



**Centralised sailing functions :** All sheets are led back to the primary winches with available “Rewind” winches



## DECK - Light and ventilation

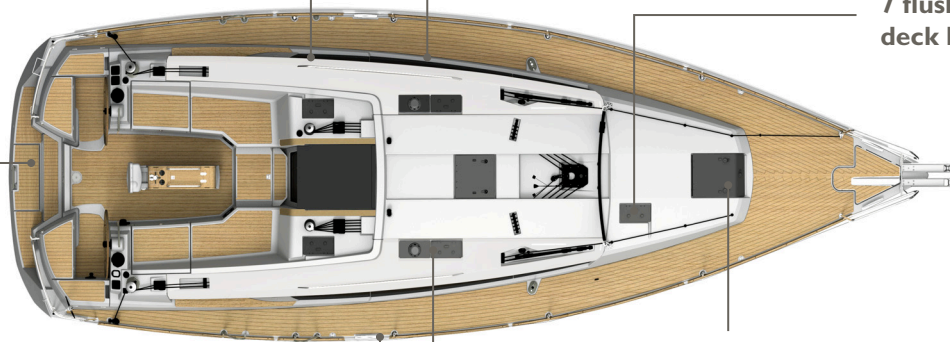
### Long, sculpted windows

Signature of the Deck Saloon range.  
Lots of light and exceptional visibility.



### 3 opening ports

**Opening port** on  
transom from the  
aft cabin



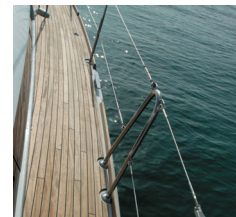
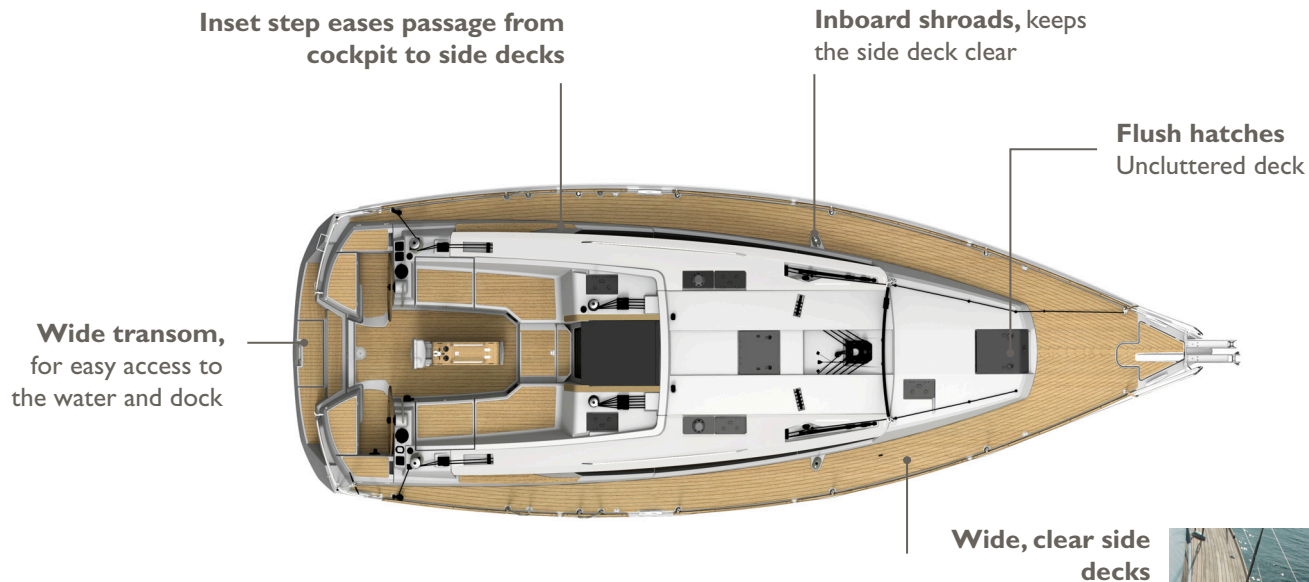
**7 flush opening  
deck hatches**

**View of the sea** when seated in  
salon through the hull ports

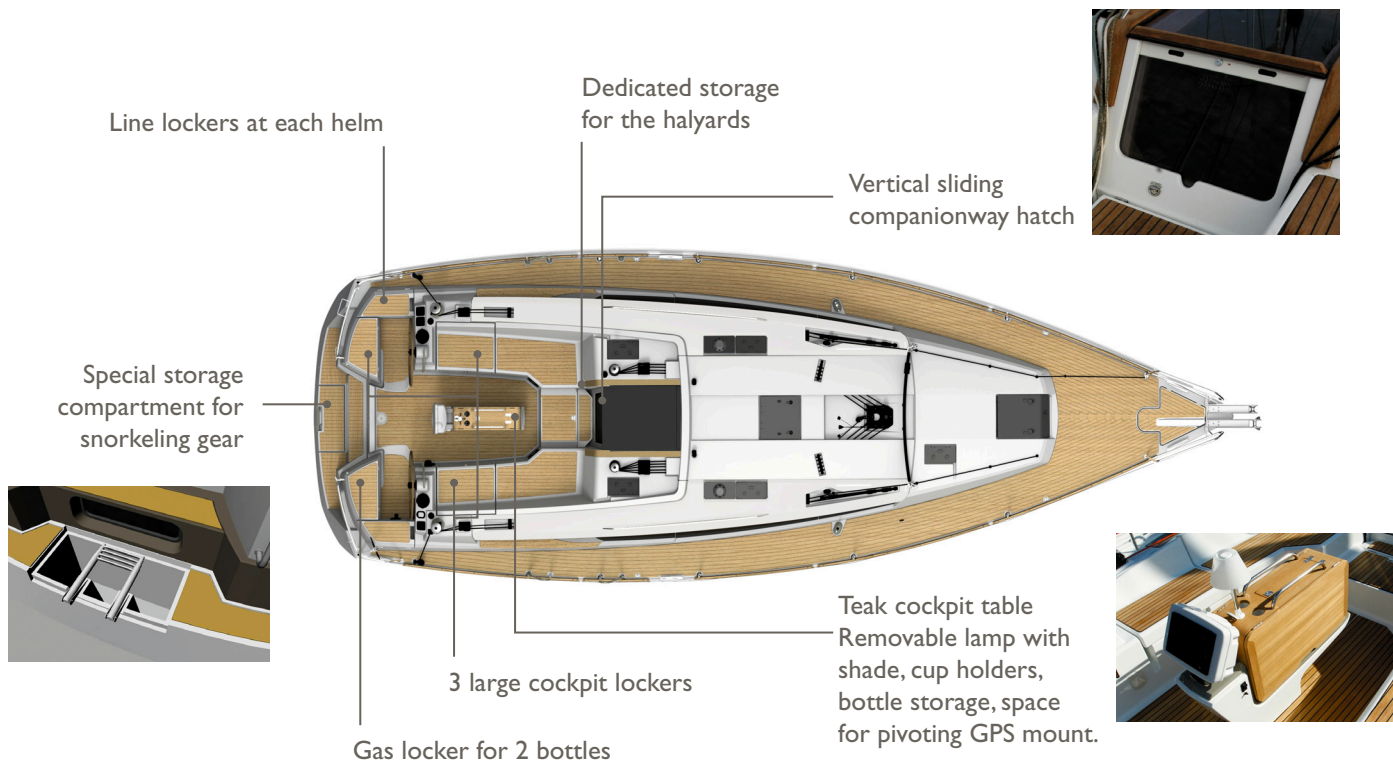
**Curved flush hatch,**  
Forward visibility, light  
and ventilation



Good passive ventilation



## DECK - Storage



INTERIOR :

**NEW AND INNOVATIVE**

• **A new interior designer:**

Franck Darnet Design ensures careful study of each detail for aesthetics, functionality, and, most importantly, ergonomics

Wood: Walnut for a contemporary look

• **High-end materials selected for this range:**

- Walnut woodwork
- Light floorboards with machined stripes
- White-laquered cabinets
- Leather details
- Polished stainless steel
- Two-tone head liner
- High-quality upholstery
- "Touch-latch" hardware on cabinets

**DECK SALOON CONCEPT, WITH VIEW OF THE SEA**

**Unique aft owner's cabin:**

- Extra large double berth (1,97m x 1,90m x 1,20m)
- Opening port in transom
- Private head with separate shower
- Plenty of storage compartments
- Seats to each side of the berth

• **Superb visibility:**

- Raised saloon flooring allows for superb visibility while standing
- Multiple hull ports provide views of the water when seated

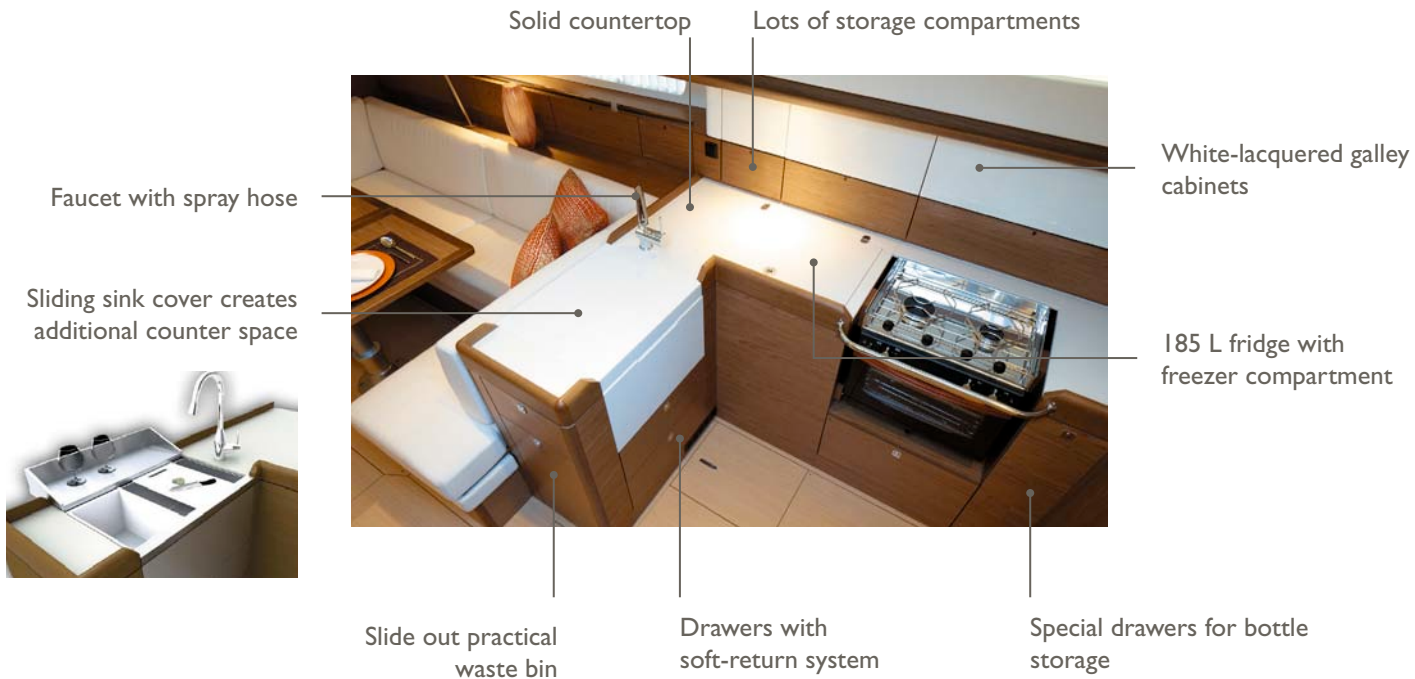


## INTERIOR LAYOUTS

Spacious **2 cabin layout** with a large aft owner's cabin and a guest cabin forward

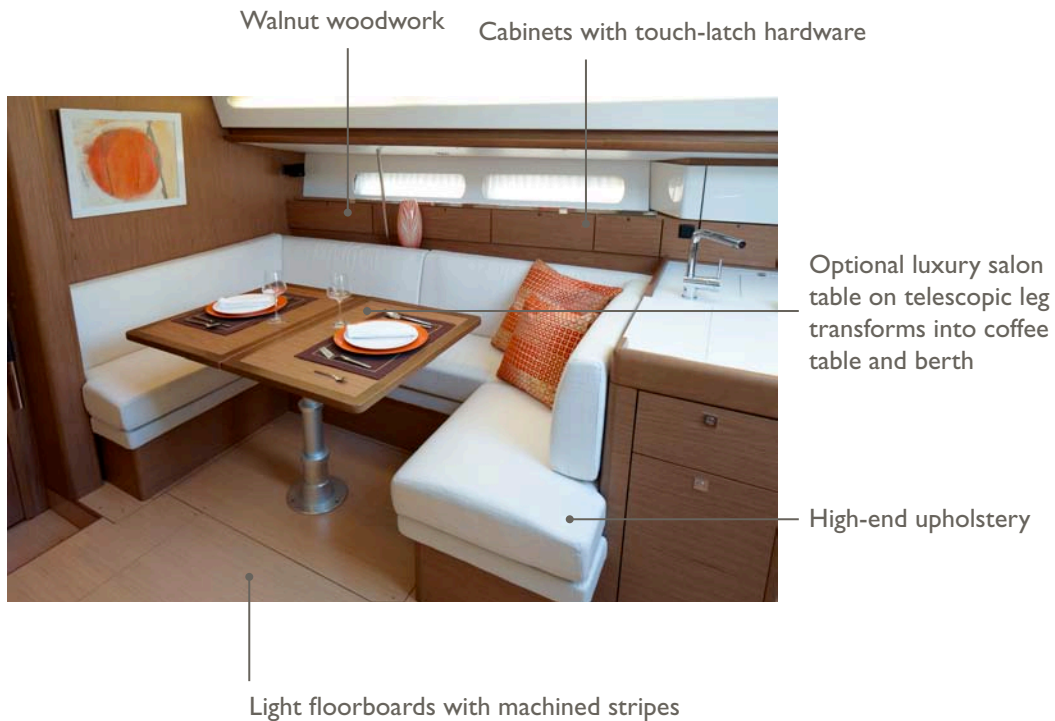


## GALLEY



## SALOON

Optional stool stores  
under the nav station  
when not in use

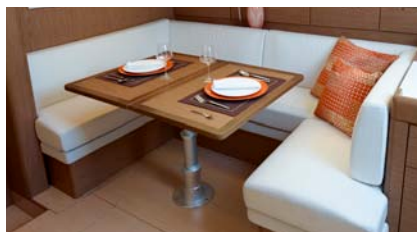
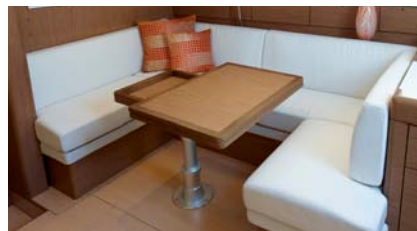


## LUXURY SALOON TABLE (option):

- Luxury saloon table mounted on an electric telescopic base transforms from dining table, to coffee table or to a berth at the touch of a button

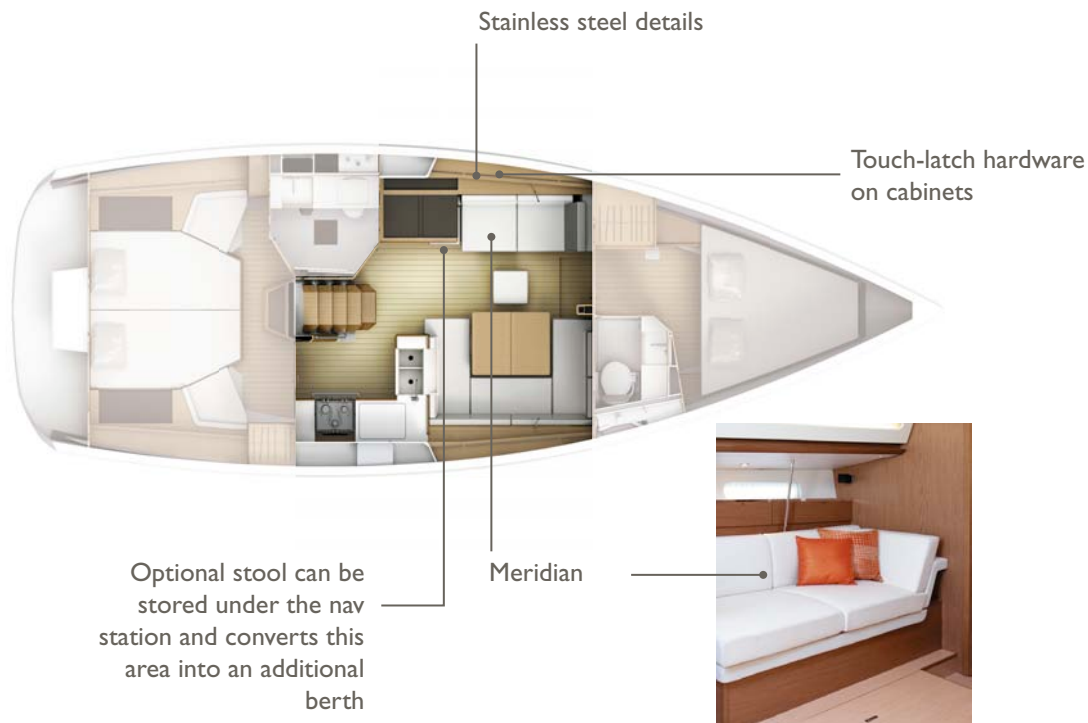


Control switch for electric table pedestal

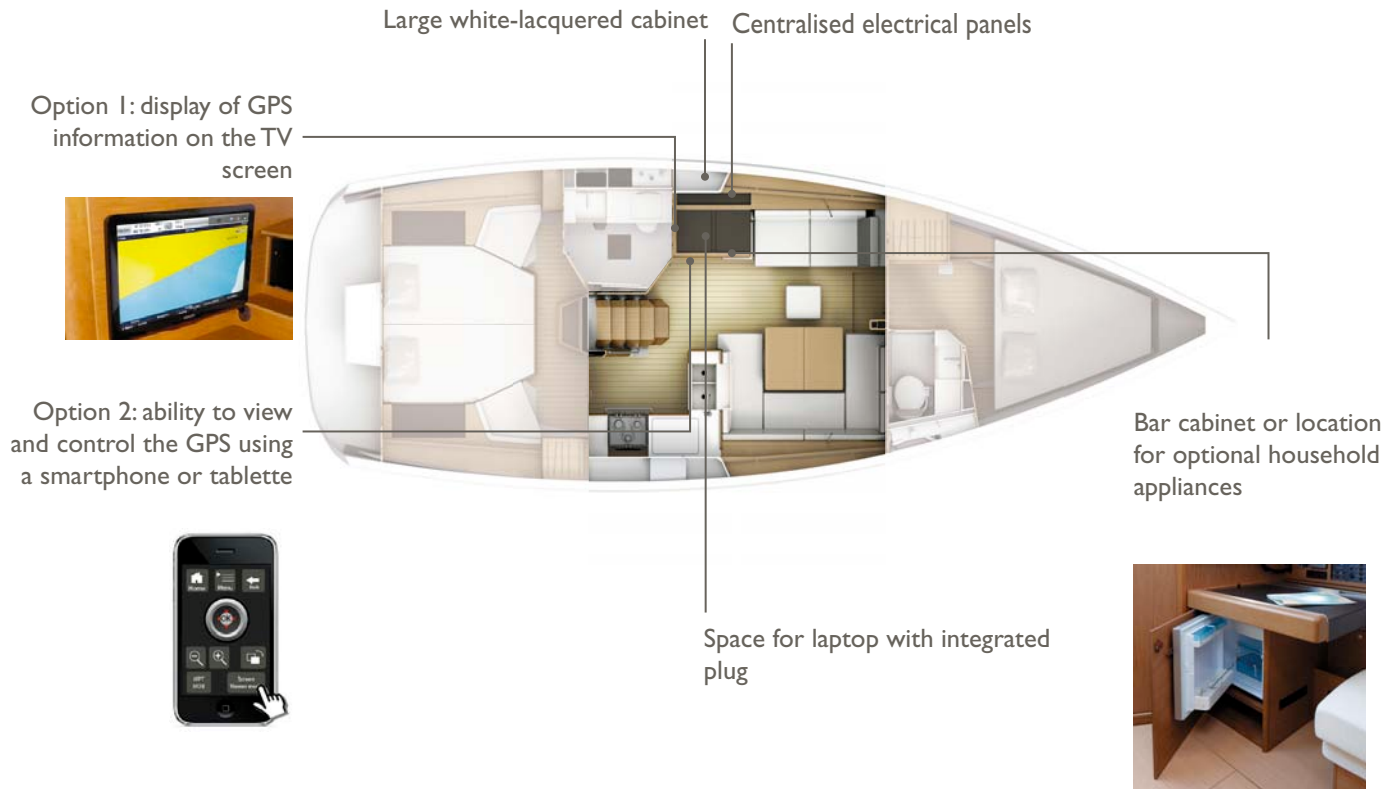


## MERIDIAN SOFA

Specially designed spaces for reading, lounging, working and eating make life onboard especially comfortable and relaxing

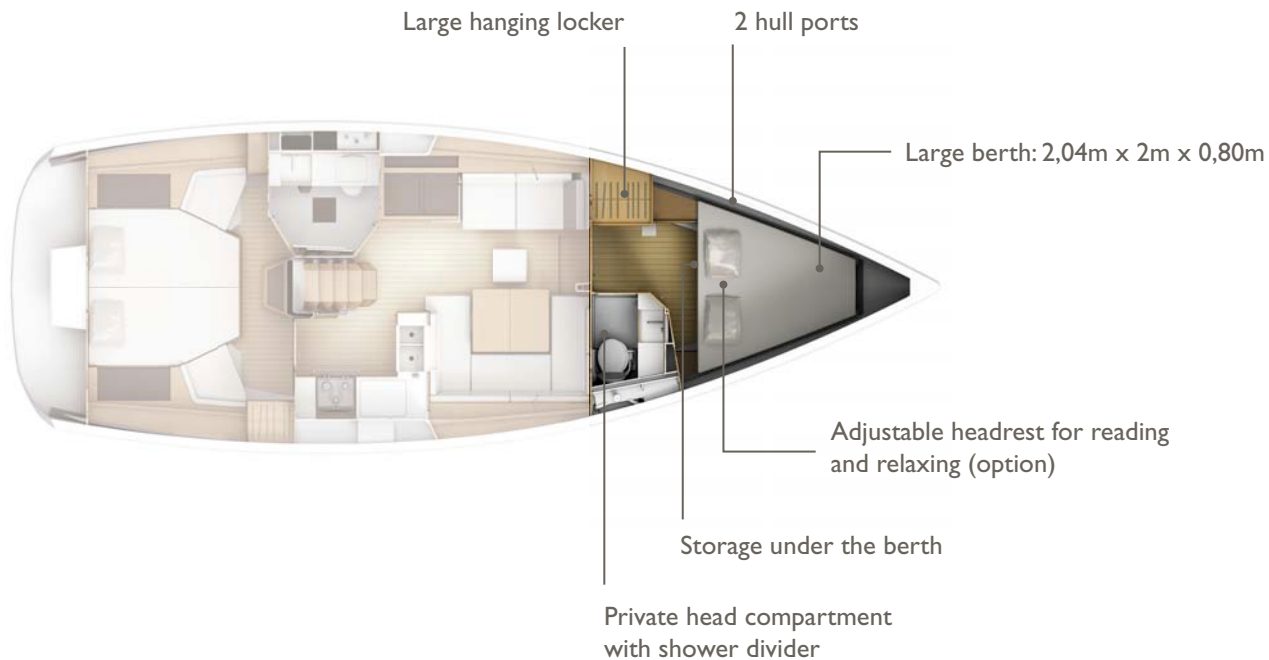


## CHART TABLE



## FORWARD GUEST CABIN

Spacious guest cabin



## PRIVATE HEAD COMPARTMENT:

Aft private head compartment:

Location of standard holding tank



White-lacquered cabinets



Modern fittings

Moulded resin sink with Corian®

Fold-down worktop



Storage for shower items

Shower column in taupe

Wood flooring

Plexiglas shower divider



## AFT CABIN OWNER

An aft cabin worthy of a 50' boat

Storage lockers with leatherette covers

Polished stainless steel fiddles

Extra large berth 2m x 1.9m

Opening port onto the transom provides a view of the water and ensures good ventilation



Lockers along hull sides with touch-latch hardware



Large hanging locker

Seating to each side of the berth



## SAIL AND RIG PLANS: Sails for every sailor

---

### Select the sail plan that best fits your style :

- **High aspect ratio rig** for maximum performance while limiting the loads on the sheets.
- **Inboard shrouds and genoa tracks** allow better trim of the standard or performance sails and easy circulation on the side decks
- Choice of self-tacking jib, Performance sails, furling or battened mainsails...
- **Code 0** offered as an option for sailing in light wind conditions

## SPECIFICATIONS

### FURLING MAINSAIL :

- Dacron®
- Horizontal panels
- UV-stabilised thread
- Radial reinforcements
- Draft stripe
- Adjustable leech line
- UV protection at sheet attachment

• Area : 33,8 m²



### SHORT OVERLAPPING FURLING GENOA (106%) :

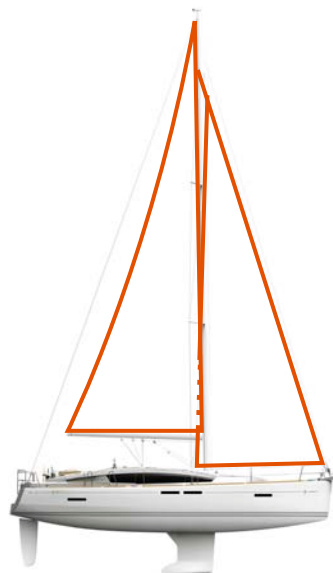
- Dacron®
- Horizontal panels
- UV-stabilised thread
- Webbing strap at head
- Bolt-rope for furler
- Anti-UV protection on foot and leech
- Draft stripe
- Webbing strap at tack
- Reefing marks
- Adjustable leech and foot lines
- Compatible with Smart Tacking

• Area : 32,4 m²



## ADVANTAGES

- Easy handling
- Quick furling of the sail
- Easy reefing
- Same height as the classic mainsail

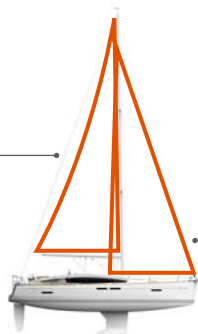


I = 15,50 m / 50'8"  
J = 4,52 m / 14'8"  
P = 15,00 m / 49'2"  
E = 4,90 m / 16'

## 1- PERFORMANCE SAILS - FURLING MAST

**FURLING MAINSAIL**  
Performance : 33,8 m<sup>2</sup>

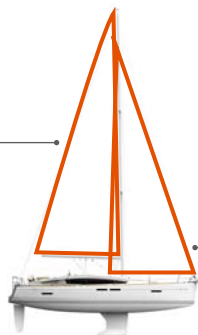
**PERFORMANCE GENOA**  
106% : 32,4 m<sup>2</sup>



## 2- PERFORMANCE SAILS - CLASSIC MAST / FULL-BATTEN

**PERFORMANCE MAINSAIL :**  
42,2 m<sup>2</sup>

**PERFORMANCE GENOA**  
106% : 32,4 m<sup>2</sup>



## A LA CARTE OPTIONS

**SELF-TACKING JIB : 28,2 m<sup>2</sup>**



**CODE 0 : 70 m<sup>2</sup>**



## PERFORMANCE SAILS : MYLAR TAFFETAS X-GRID

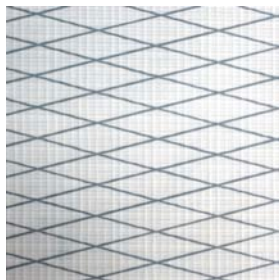
Working in collaboration with Dimension-Polyant and Technique Voiles, Jeanneau has developed a new Mylar Taffetas X-Grid fabric for the Performance range.

The triradial construction of the sail contributes to superior shape holding, but other forces can act on the individual panels. By using a specially-designed X-Grid® of fibres angled at 6° laminated into the fabric, better bias control can be achieved which makes the sail more resistant to deformation and aging.

The performance of these new fabrics provides a more stable sail cloth that is lighter, easier to handle, with better shape control over time.

These new Performance sails are easily recognisable; they include a taffeta laminate that is light grey that gives them a very “hi-tech” look.

- 1 - Protective taffeta
- 2 - Polyester film
- 3 - X-Grid® fibres
- 4 - Polyester scrim

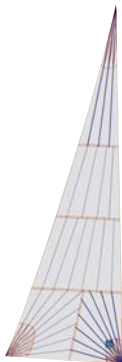


## SPECIFICATIONS

### FURLING MAINSAIL

#### Performance :

- Triradial cut
- UV-stabilised thread
- Radial reinforcements
- Draft stripe
- Adjustable leech line
- UV protection at sheet attachment
- Replaces the standard mainsail
- **Area : 33,8 m<sup>2</sup>**

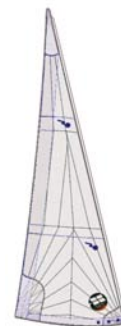


## SPECIFICATIONS

### FURLING GENOA

#### 106% Performance :

- Mylar/taffeta X-Grid fabric in grey colour
- Triradial cut
- UV-stabilised thread
- Webbing strap at head
- Bolt-rope for furler
- Anti-UV protection on foot and leech
- Radial reinforcements
- Draft stripe
- Webbing strap at tack
- Reefing marks
- Adjustable leech and foot lines
- Replaces the standard genoa
- **Area : 32,4 m<sup>2</sup>**



## ADVANTAGES

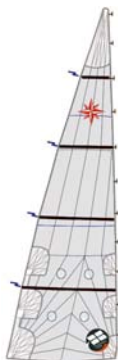
- Sail plan geometry is identical to the standard sail plan providing the same balance, versatility and ease of handling
- High-end sail cloth material means less stretch and better performance
- Tri radial cut ensures better sail shape and improved resistance to wear.
- Versatile and balanced sail plan at all sailing angles
- Easy to handle sail plan
- Compatible with Smart Tacking

## SPECIFICATIONS

### MAINSAIL

#### full-batten Performance :

- Triradial cut
- Mylar/taffeta X-Grid fabric in grey colour
- Stainless steel eyes
- UV-stabilised thread
- Draft stripe
- Radial reinforcements
- Adjustable leech and foot lines
- Loose-footed
- Fibreglass battens
- 2 reef points each with singleline reefing system.
- Replaces the standard mainsail
- Included in classic mast option
- **Area : 42,4 m<sup>2</sup>**



## ADVANTAGES

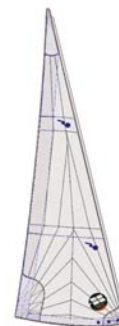
- High-end sail cloth material means less stretch and better performance
- Powerful sail plan in light winds
- Tri radial cut ensures better sail shape and improved resistance to wear.
- Balanced sail plan for all sailing angles
- Easy to use in all conditions
- Compatible with «Smart tacking»

## SPECIFICATIONS

### FURLING GENOA

#### 106% Performance :

- Mylar/taffeta X-Grid fabric in grey colour
- Triradial cut
- UV-stabilised thread
- Webbing strap at head
- Bolt-rope for furler
- Anti-UV protection on foot and leech
- Radial reinforcements
- Draft stripe
- Webbing strap at tack
- Reefing marks
- Adjustable leech line
- Replaces the standard genoa
- Included in classic mast option
- **Area : 32,4 m<sup>2</sup>**



## SPECIFICATIONS

### SELF-TACKING FURLING JIB :

- Mylar/taffeta X-Grid fabric in grey colour
- Triradial cut
- UV-stabilised thread
- Webbing strap at head
- Bolt-rope for furler
- Anti-UV protection on foot and leech
- Draft stripe
- Radial reinforcements
- Webbing strap at tack
- Adjustable leech line
- Replaces the standard genoa
- Requires deck hardware for self-tacking jib
- **Area : 28,2 m<sup>2</sup>**



## AVANTAGES

- Hands-free tacking
- Great up-wind performance
- Perfect for short-handed sailing

## PERFORMANCE SAILS : MYLAR TAFFETAS X-GRID

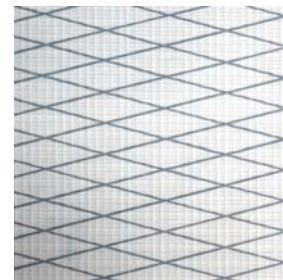
Working in collaboration with Dimension-Polyant and Technique Voiles, Jeanneau has developed a new Mylar Taffetas X-Grid fabric for the Performance range.

The triradial construction of the sail contributes to superior shape holding, but other forces can act on the individual panels. By using a specially-designed X-Grid® of fibres angled at 6° laminated into the fabric, better bias control can be achieved which makes the sail more resistant to deformation and aging.

The performance of these new fabrics provides a more stable sail cloth that is lighter, easier to handle, with better shape control over time.

These new Performance sails are easily recognisable; they include a taffeta laminate that is light grey that gives them a very “hi-tech” look.

- 1 - Protective taffeta
- 2 - Polyester film
- 3 - X-Grid® fibres
- 4 - Polyester scrim





## SPECIFICATIONS

### CODE 0

#### Selden continuous line furler :

- Laminate Mylar/Aramid X-Grid fabric in light grey
- Triradial cut
- Anti twist luff cord
- UV-stabilised thread
- Straps for sheet attachment
- Adjustable leech and foot lines
- Requires rigging for asymmetrical spinnaker / Code 0
- **Area : 70 m<sup>2</sup>**



## ADVANTAGES

- A light wind sail designed for use between 60° and 120°
- Continue to sail when others have given up and turned on the motor
- Continuous line furler allows easy deployment and furling from the cockpit
- Ideal addition to boats with small overlapping jibs and self-tacking jibs



## CODE 0: MYLAR ARAMID X-GRID

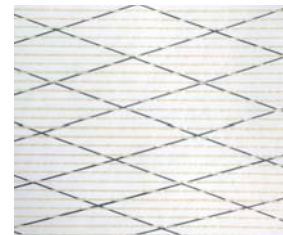
For the development of the new Code 0 sails on a continuous line furler, Jeanneau selected a sail cloth that is perfectly adapted for use in light airs. Highly resistant, light weight and able to be furled, the Mylar Aramid X-Grid has a light grey finish that is translucent.

Unidirectional Aramid fibres, vacuum-bagged together between two polyester films, provide an unequalled resistance to weight ratio. This ultra light sail is easy to handle and fills with the slightest puff of wind. Adding the X-Grid® polyester fibres at a 6° angle provides excellent bias control in all directions and improves sail shaping, as well as, resistance to tearing.

Lastly, a taffeta is added to the external laminate of the sail cloth to protect the sail from ultraviolet light and wear during furling or storage.

The Code 0 sails from Jeanneau integrate these high-performance materials to meet the exacting demands of our owners. In addition to these high-end materials, the look of these sails sets Jeanneau apart.

- 1 - Polyester film
- 2 - X-Grid® fibres
- 3 - Unidirectional Aramid fibres
- 4 - Protective taffeta





## WHAT IS 360 DOCKING?

- The 360 Docking system is a revolutionary propulsion system developed by Jeanneau and ZF Marine. This unique system allows easy and safe manoeuvring of a sailboat in tight quarters via a joystick mounted in the cockpit.
- 360 Docking: Docking made easy!

## DIFFERENT MODELS AVAILABLE:

- The 360 Docking system has been developed in several different sizes in order to adapt it to sailboats from 40 to 57':

**POD60 : 38' – 42'**  
**POD90 : 43' – 49'**  
**POD120 : 50' – 54'**  
**POD180 : 55' – 58'**



## HOW DOES IT WORK?

- The concept is simple: the engine is coupled with a pivoting sail drive, capable of rotating 360°.
- The joystick transmits the commands to a control box, which uses the autopilot to lock the helm. Then, a simple movement of the joystick controls the orientation and the thrust of the pod, as well as the bowthruster when moving sideways.
- You can vary throttle power with the joystick. You can also combine movements, like rotation and forward moment to turn and move forward at the same time.



> Forward movement: saildrive facing aft



> Sideways movement: saildrive turns 90° and activates bowthruster



> Aft movement: saildrive turns 180°



> Rotation: saildrive turns 90° to pivot boat around axis

## UNIQUE FEATURES OF THE SYSTEM:

- **Sideway manoeuvring:** manoeuvre in ways never before possible
- **Easy and powerful rotation:** using the saildrive leg at 90°, the boat can be rotated easily and quickly using the main engine, which is much more powerful than the bowthruster.
- **Very powerful reverse gear:** both with throttle and joystick due to the fact that the sail drive turns around 180° so that the propeller is always facing "forward." This also means that folding propellers work very well with the system.
- **Ability to stop and adapt:** with the ability to move in any direction while applying variable power means that normal steerageway is not necessary for manoeuvring. The boat can be stopped, repositioned and moved at the touch of the joystick without having to do every manoeuvre at higher speeds. Safety and piece of mind.
- **Better visibility when manoeuvring:** most of our boats allow the helmsman to be standing when using the joystick so that he or she has a better view of the dock than if reaching down to use a traditionally-placed throttle control.
- **Comfort of an electronic throttle:** the regular throttle on the boat is electronic. This makes it easy to use.
- **Gearbox longevity:** since there is no reverse gear, the 360 Docking gearbox does not include any of the conical gears that typically wear out in standard gearboxes.

## FAQ :

- **Is this system available from other boat manufacturers?**  
The partnership between ZF Marine and the Groupe Beneteau means that only Jeanneau and Beneteau boats have access to this technology. Our exclusive agreement extends into 2014.
- **Can I use a folding propeller?**  
Yes, folding propellers work very well with the system because the main drawback of folding propellers is that they don't work in reverse, but since the drive always rotates to face forward to the direction you want to go, the folding propeller works efficiently, even in reverse. We recommend Flex-o-Fold propellers.
- **Can I use a feathering (Max-Prop) propeller?**  
No, there is no need to use a feathering propeller, as they are designed to rotate the blades when in reverse, so there is no clear advantage to installing these on a drive system with no reverse gear.
- **If, for some reason, there is a failure, can I rotate the saildrive manually?**  
Yes, it can be rotated back into position manually in case of failure.



## PRISMA PROCESS



Leader in vacuum bagging technology for the construction of racing boats, JTA developed an resin injection process applicable to the construction of cruising boats. By using advanced engineering, precisely positioned layers of glass fabric and mat and specially developed core materials, Jeanneau is able to mould a deck to exacting tolerances.

Jeanneau's leadership in this domain gives it a substantial advantage over its competitors and ensures unequalled quality to the customer.

This 21<sup>st</sup> century technology allows Jeanneau to manufacture complex fibreglass parts with:

- Perfect finish on both sides (no need for a counter mould)
- Reduced weight (providing the sailboat better stability/performance)
- Increased strength and rigidity of the piece (quality of lay-up)
- Reduction by 90% of VOC emissions (environmentally-friendly)
- Optimum working conditions for the production team (no contact with resins/catalysts)
- High quality parts (precise control of gelcoat, core materials and resin injection)

The deck of the Jeanneau 53 is the largest mass-produced injection fibreglass part in the world.



## ALPI WOOD - WALNUT

### SALES POINTS:

#### Environmental:

- Ayous (Triplochiton scleroxylon - Sterculiacées) trees in managed forests of indigenous hardwoods are selected and cut, with a constant care given towards long term preservation of natural resources.
- Teak and other soft rainforest woods often come from geopolitically sensitive regions and are not managed in a sustainable way.

#### Quality:

- These ALPI wood panels are substantially more expensive and reliable than standard marine plywood. They are used by top of the line furniture manufacturers, as well as many exclusive super-yacht builders (for example Azimut and Ferretti only use ALPI wood).
- Consistency of finish and colors throughout the boat.
- Elimination of “defects” in wood panels.

#### Durability:

- Harder finish that is more resistant to humidity
- Better resistance to UV
- Easier repairs as veneer is tinted through and through so clear varnishes can be used

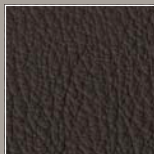


## Ambiance "MEDITERRANEO"

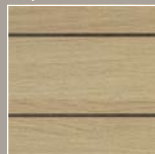
### SALOON



**UPHOLSTERY** leather / leatherette ▶ *Chocolat*

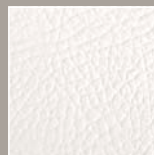


**FLOOR** ▶ Oak floorboards with dark stripes



**BACKRESTS & SEATS**

▶ *PVC Mediterraneo Old White*



**CURTAINS**

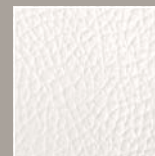
▶ *Magnifico Snow*



### CABINS

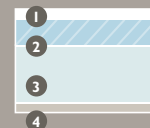
**SEATS**

▶ *PVC Mediterraneo Old White*



**BEDS**

▶ *Premium mattress*



- 1- Removable mattress cover fabric with Ultra-Fresh® is anti-microbial, anti-bacterial and non-allergenic
- 2- Top: 40mm of High-Resilience foam
- 3- Base: 80mm of high-density polyether foam
- 4- Breathable fabric

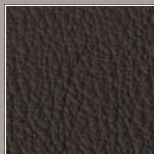
Infill cushion for convertible berth in Ger white fabric

Ambiance "WHITE"

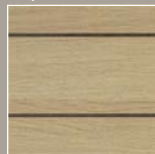
## SALOON



**UPHOLSTERY** leather /  
leatherette ▶ *Chocolat*

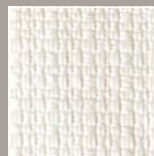


**FLOOR** ▶ *Oak*  
floorboards with dark  
stripes



**BACKRESTS & SEATS**

▶ *GER White*



**CURTAINS**

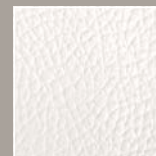
▶ *Magnifico Snow*



## CABINS

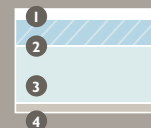
**SEATS**

▶ *PVC Mediterraneo*  
*Old White*



**BEDS**

▶ *Premium mattress*



- 1- Removable mattress cover fabric with Ultra-Fresh® is anti-microbial, anti-bacterial and non-allergenic
- 2- Top: 40mm of High-Resilience foam
- 3- Base: 80mm of high-density polyether foam
- 4- Breathable fabric

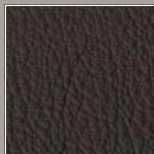
Infill cushion for convertible berth in Ger white fabric

## Ambiance "METROM"

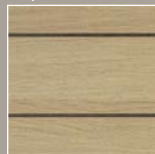
### SALOON



**UPHOLSTERY** leather / leatherette ▶ *Chocolat*



**FLOOR** ▶ Oak floorboards with dark stripes



**BACKRESTS & SEATS**

▶ *Metrom*



**CURTAINS**

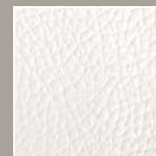
▶ *Magnifico Snow*



### CABINS

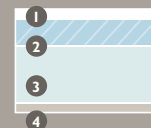
**SEATS**

▶ *PVC Mediterraneo Old White*



**BEDS**

▶ *Premium mattress*



1- Removable mattress cover fabric with Ultra-Fresh® is anti-microbial, anti-bacterial and non-allergenic

2- Top: 40mm of High-Resilience foam

3- Base: 80mm of high-density polyether foam

4- Breathable fabric

Infill cushion for convertible berth in Ger white fabric



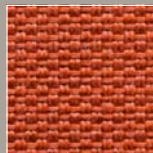
## Ambiance "TERRA COTTA"

### SALOON

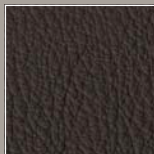


#### BACKRESTS & SEATS

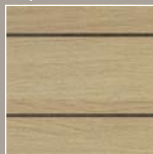
► Tudor Chutney



UPHOLSTERY leather / leatherette ► Chocolat



FLOOR ► Oak floorboards with dark stripes



#### CURTAINS

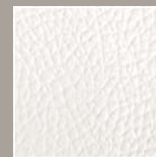
► Magnifico Snow



### CABINS

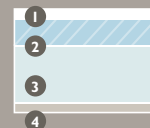
#### SEATS

► PVC Mediterraneo Old White



#### BEDS

► Premium mattress



- 1- Removable mattress cover fabric with Ultra-Fresh® is anti-microbial, anti-bacterial and non-allergenic
- 2- Top: 40mm of High-Resilience foam
- 3- Base: 80mm of high-density polyether foam
- 4- Breathable fabric

Infill cushion for convertible berth in Ger white fabric

## Ambiance "LEATHER"

### SALOON



**FLOOR** ▶ Oak floorboards with dark stripes



#### CURTAINS

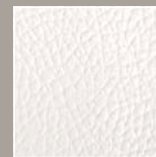
▶ *Magnifico Snow*



### CABINS

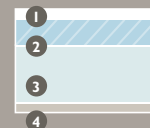
#### SEATS

▶ *PVC Mediterraneo Old White*



#### BEDS

▶ *Premium mattress*



- 1- Removable mattress cover fabric with Ultra-Fresh® is anti-microbial, anti-bacterial and non-allergenic
- 2- Top: 40mm of High-Resilience foam
- 3- Base: 80mm of high-density polyether foam
- 4- Breathable fabric

Infill cushion for convertible berth in Ger white fabric

## EXTERIOR UPHOLSTERY

### SPRAYHOOD PROTECTION BIMINI / LAZY BAG



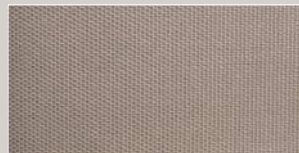
► Sunbrella taupe



### COCKPIT CUSHIONS

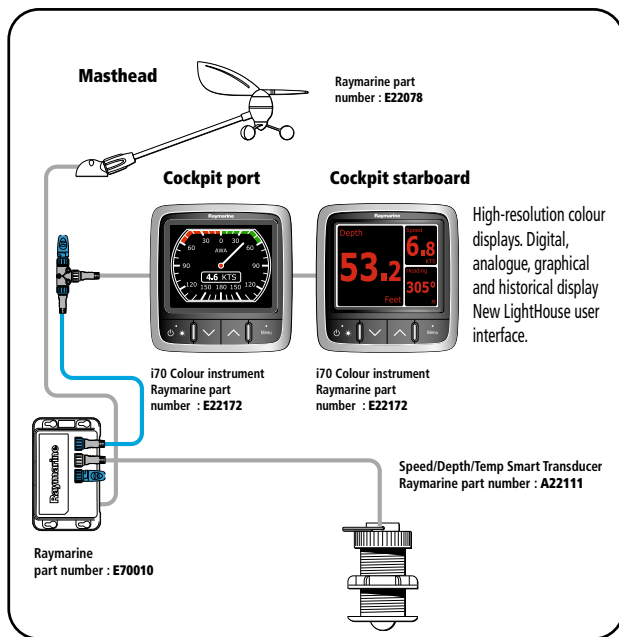


► Sunbrella sling taupe



# Raymarine

## Electronic Pack

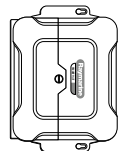


## OPTIONS 1/2

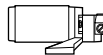
### Optional inboard autopilot Cockpit port



p70 Colour Autopilot Control Head  
Raymarine part number: **E12166**



Course computer SPX30 12/24 V with built-in Rate Gyro, fluxgate compass, rudder reference transducer.  
Raymarine part number: **E12199**



Autopilot with p70 controlhead SeaTalk/NMEA Interface to GPS and i70 instruments. Backlit LCD confirms current and locked heading, plus wind and navigational data when connected to a MFD display.

### e95 Multifunction Touchscreen Display cockpit WVGA 800 x 480 pixels



Touchscreen Multifunction display,  
Navionics Silver supplied  
Raymarine part number: **T70042**



# Raymarine

## OPTIONS 2/2

### Image of the GPS display on the TV Set in the main saloon



2 way control between the Multifunction display and your mobile device.  
Application to download from the App Store, Google Play or the Amazon Store.  
Require a Smartphone or a tablet not supplied.

### Digital Radar radome antenna 48 NM 18"



DIGITAL radar antenna supplied with  
antenna cable and mast bracket.  
Raymarine part number: **E92130 +**  
**A55079D + M92722**

### SmartController Wireless remote



Raymarine part number: **E15023**



July 2012 - Non contractual document