

JEANNEAU
58



S U M M A R Y

- > SPECIFICATIONS
- > KEY POINTS
- > EXTERIOR
- > INTERIOR
- > SAILS
- > CONSTRUCTION
- > UPHOLSTERY
- > ELECTRONIC PACKAGES



JEANNEAU
YACHTS



TECHNICAL INFORMATION

Overall length: 17,78 m / 58' 4"
 Hull length: 17,28 m / 56' 8"
 Waterline length: 15,30 m / 50' 2"
 Beam: 5,00 m / 16' 4"

Displacement: 21.450 kg / 47.289 lbs
 Standard keel draft: 2,50 m / 8' 2"
 Shoal keel draft: 2,10 m / 6' 10"

Cabins: 2 / 3 / 4 / 5
 Berths: 4 / 6 / 8 / 10 + 2

Engine power: Volvo 150 Hp / 110 Kw
 Fuel capacity: 420 l / 111 US gal
 Water capacity: 930 l / 246 US gal
 Cold capacity: 300 l / 79 US gal

Sail area:
 - Standard 146 m² / 1 571 Sq ft
 - Classic 163 m² / 1 754 Sq ft

CE Category: A13 / B14 / C16 Pers
 Designers: Philippe Briand Yacht Design
 Concept et Design Garroni Premorel - Jeanneau Design

VERSIONS • LAYOUTS

Fixed keel version
 Shoal draft version

2 cabins / 2 heads
 3 cabins / 3 heads
 4 cabins / 4 heads
 Skipper cabin
 Forward bow cabin

EXTERIOR

This elegant offshore cruiser offers an exceptional interior and deck plan designed by Vittorio Garroni with ease of handling in mind: every detail has been conceived to offer the highest quality cruising experience.

Sailing performance worthy of a Jeanneau Yacht:

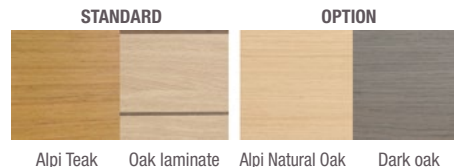
- From the drawing boards of Philippe Briand and Garroni Design
- A long waterline and careful weight distribution that ensures speed and seaworthiness unmatched in her class.



INTERIOR

New styles of contemporary interior that reflects a long nautical heritage:

- Rich materials are found throughout including leather, blond teak flooring and stainless steel
- Sleek windows bathe the interior is light.
- Choice of two interior woods and finishes



A level of comfort that you have been seeking:

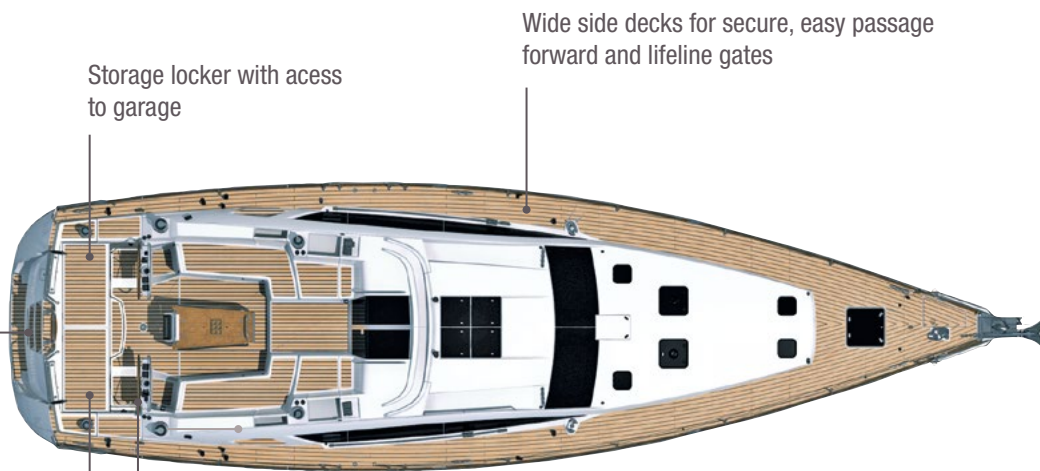
- Finely appointed cabins, spacious galley and luxurious lounging and dining areas make every moment onboard enjoyable and memorable
- Large choice of layouts
- Tender garage

WELCOME TO THE WORLD OF JEANNEAU YACHTS

DECK



Fold-down transom swim platform



Storage locker with access to garage

Wide side decks for secure, easy passage forward and lifeline gates

Storage locker for liferaft



Twin steering stations on consoles



DECK (continued)



Sliding entry door

Transom can be used even when the garage door is closed, thanks to steps integrated into the door

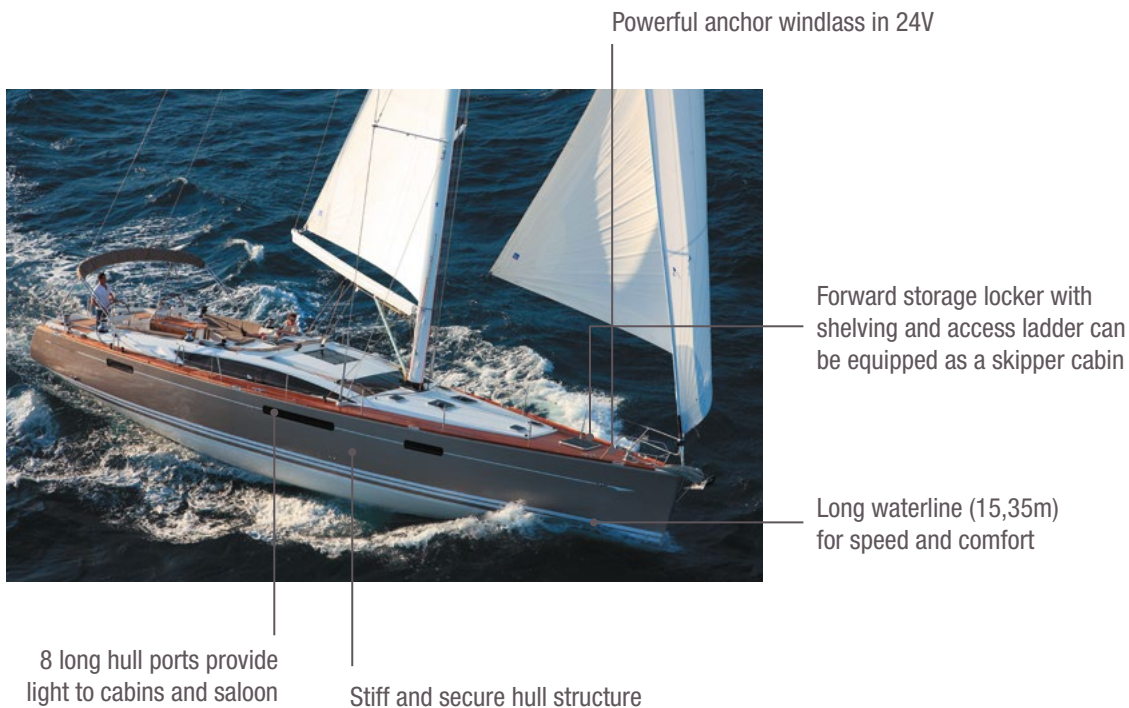
Raised lifelines (750 mm)

11 opening deck hatches and 6 opening ports

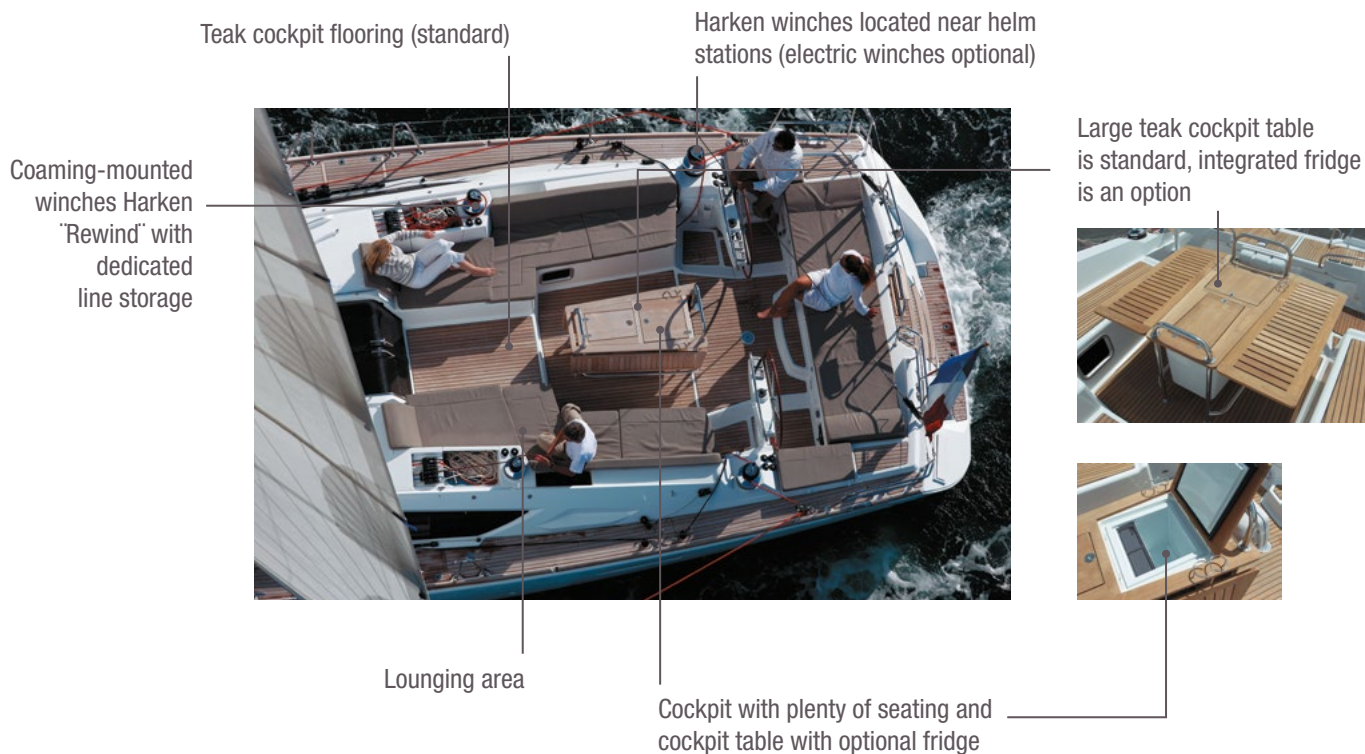


Long, ball-bearing genoa tracks on the side decks

DECK (continued)



DECK (continued)



DECK (continued)



TENDER GARAGE

Space for a 2.7m RIB tender fully-inflated
or up to a 3.1m RIB tender semi-inflated



Optional winch and high-pressure
inflator for handling larger tenders



INTERIOR LAYOUTS

2 cabins version / 2 heads (+ skipper cabin)



3 cabins version / 3 heads (+ Forward bow cabin)



3 cabins version / 3 heads (+ skipper cabin)



4 cabins version / 4 heads (+ Forward bow cabin)



SALOON

3 water tanks located under saloon floor for optimum weight distribution

Room for 8



Folding armchairs -
Dedon Seax (option)



Table on electric pedestal can be converted to a
coffee table (option) -
Table shown in this photo is the standard table

SALOON

DVD player with speakers in saloon
and waterproof speakers in cockpit

Bar cabinet between
the seating



● Retractable TV in the
saloon in front of the sofa

Lounge sofa seating
in triple density foam

GALLEY



Plenty of storage for offshore cruising including under floor storage



CHART TABLE



FORWARD OWNER'S CABIN

Double bed (2.1m x 1.6m)
with PREMIUM mattress
(optional inner-spring mattress available)

LED reading lights



Cubby with stainless
steel fiddles

Storage compartments
along the hull

Vanity area with seat,
desk and storage

Easy access to the bed

Upholstered moulding
around bed

Storage compartment
with gas lifters



FORWARD OWNER'S CABIN (continued)

6 opening hatches in owner's space
and 2 fixed hull ports

Dimmable LED overhead lighting

Large owner's head



Moulded sink with
soap dish

Separate shower with
plexiglass door

Storage for
shower items
Foot rest

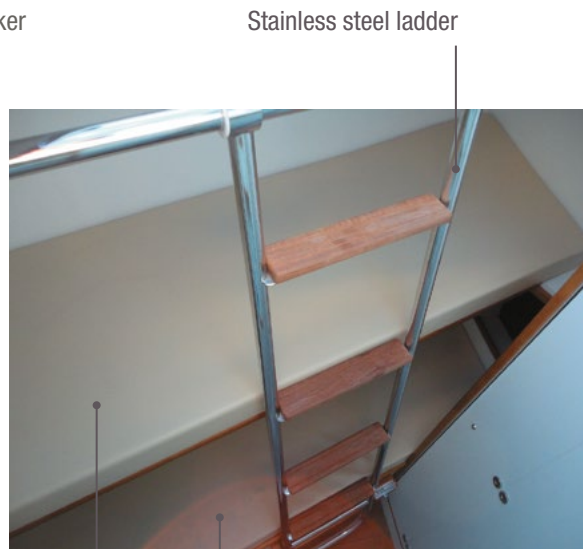
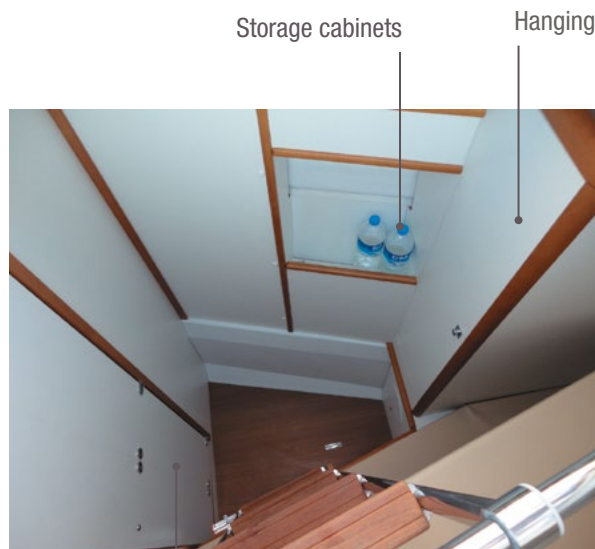


Leather-wrapped
stainless steel
handrail

Full length mirror

SKIPPER CABIN (option)

(Available only with forward owner's cabin version)



2 single berths
(upper berth can be folded away)

2 FORWARD TRANSFORMABLE CABINS DESIGN

Removable bulkhead between cabins allows for transformation from double berth and bunks to master suite with double berth and settee to port

Vanity area with desk
and storage

7 opening hatches and
2 fixed hull ports

Port side



Hanging locker

Bunk beds that transform
into settee

Starboard



Double berth with PREMIUM mattress
and beige cover

Hanging locker

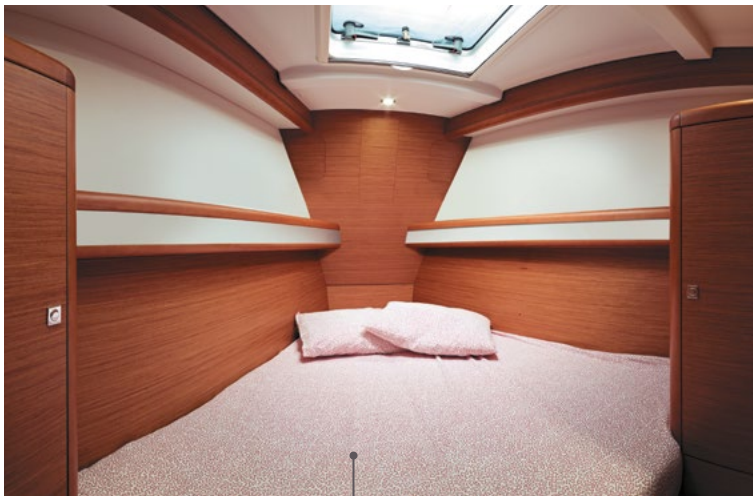
Private head compartment with
plexiglass shower divider

Storage drawers
under berth

FORWARD BOW CABIN (option)

(Available only with 2 forward cabins version)

V-berth



V-berth forward with large opening deck hatch
(Access via the forward port head compartment)

AFT OWNER'S CABIN

Double bed (2.1m x 1.67m) with PREMIUM mattress
(Optional inner-spring mattress available)

Large ports provide
light and ventilation

Sofa



Vanity area with desk
and storage



Night stands to each side of
the berth with lamps

Upholstered moulding around bed

Dresser with multiple
storage compartments

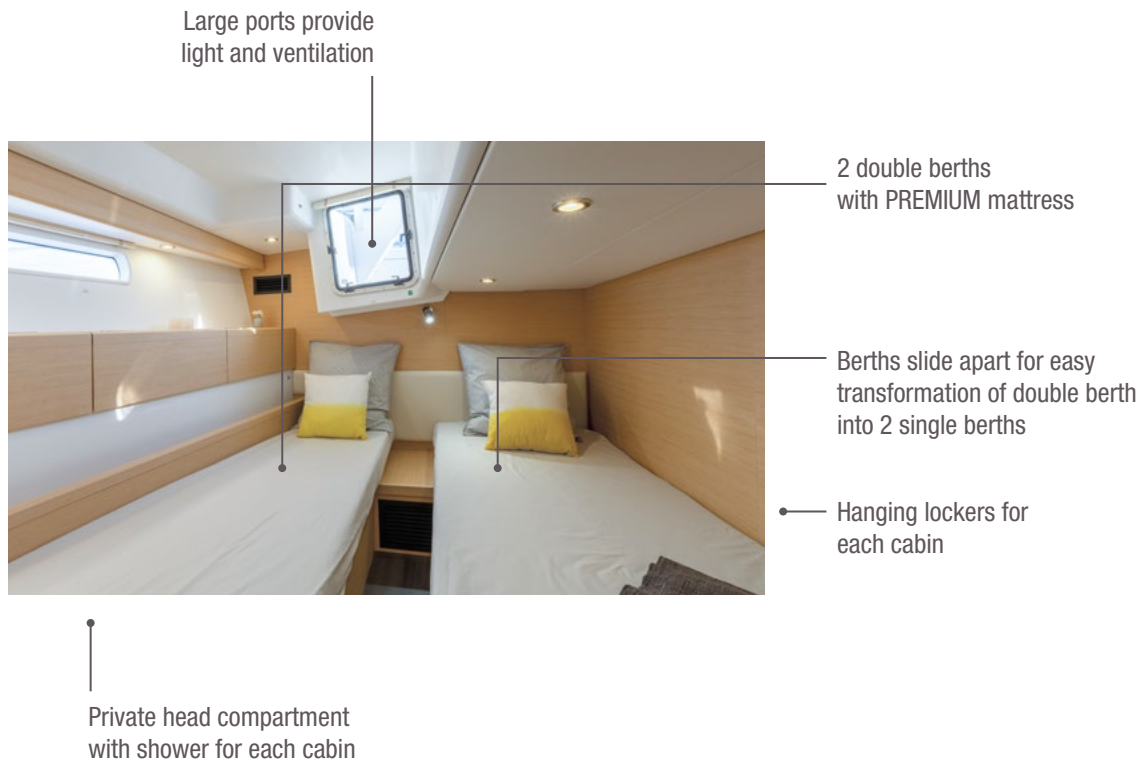
Closed cabinets

Owner's head
compartment with
separate shower



Easy access to
the engine

2 AFT CABINS



SAIL AND RIG PLANS: Sails for every sailor

Select the sail plan that best fits your style:

- **A very balanced sail plan** for maximum performance while limiting the loads on the sheets.
- **Inboard shrouds and genoa tracks** allow better trim of the standard or performance sails and easy circulation on the side decks.
- Furling mainsail available in Mylar or Hydranet, as well as a classic mast option
- Releasable forestay option
- Simplified sail handling : German sheeting, electric furler, etc...

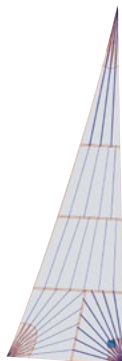


SPECIFICATIONS

FURLING MAINSAIL :

- Mylar-Taffeta
- Triradial cut
- UV-stabilised thread
- Radial reinforcements
- Draft stripe
- Adjustable leech line
- UV protection at sheet attachment

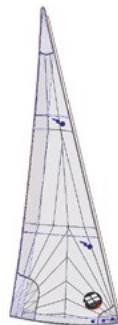
• Area : 58 m²



LARGE OVERLAPPING FURLING GENOA (135%):

- Mylar-Taffeta
- Triradial cut
- UV-stabilised thread
- Webbing strap at head
- Bolt-rope for furler
- Anti-UV protection on foot and leech
- Draft stripe
- Webbing strap at tack
- Reefing marks
- Adjustable leech line

• Area : 88 m²



ADVANTAGES

- An all-purpose sail plan for all sailing conditions
- A balanced sail plan for all sailing angles
- Standard tri radial cut sails improve performance and increase lifespan

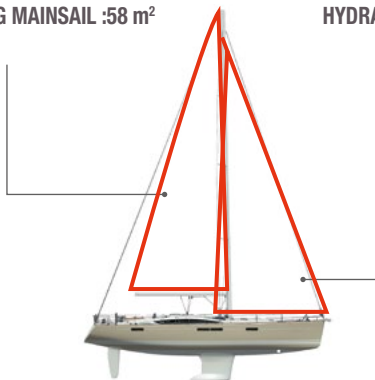


I = 21,00 m / 68'10"
J = 6,68 m / 21'10"
P = 19,59 m / 64'3"
E = 6,40 m / 20'11"

1- FURLING MAST - UPGRADE SAILS HYDRANET®

HYDRANET® FURLING MAINSAIL : 58 m²

HYDRANET® FURLING GENOA : 88 m²



3- CODE 0

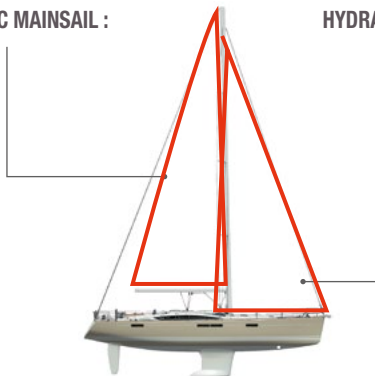
CODE 0 : 125 m²



2- CLASSIC MAST - UPGRADE SAILS HYDRANET®

**HYDRANET® CLASSIC MAINSAIL :
71,7 m²**

HYDRANET® FURLING GENOA : 88 m²



HYDRANET® SAILS

Designed for offshore use, Hydranet fabrics offer excellent performance and wear-resistance. The woven Dyneema strands offer excellent bias control and good resistance to abrasion.

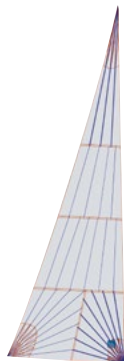




SPECIFICATIONS

HYDRANET® FURLING MAINSAIL :

- Hydranet®
- Triradial cut
- Coutures fil anti-UV
- Radial reinforcements
- Draft stripe
- Adjustable leech line
- UV protection at sheet attachment
- Replaces the standard mainsail
- **Area : 58 m²**



SPECIFICATIONS

HYDRANET® FURLING GENOA :

- Hydranet®
- Triradial cut
- UV-stabilised thread
- Webbing strap at head
- Bolt-rope for furler
- Anti-UV protection on foot and leech
- Radial reinforcements
- Foam luff
- Draft stripe
- Webbing strap at tack
- Reefing marks
- Adjustable leech line
- Replaces the standard genoa
- **Area : 88 m²**



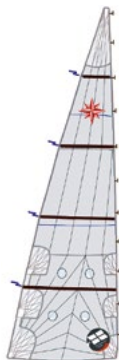
ADVANTAGES

- Sail plan geometry is identical to the standard sail plan providing the same balance, versatility and ease of handling
- High-end sail cloth material means less stretch and better performance
- Balanced sail plan for all sailing angles
- Easy to use in all conditions

SPECIFICATIONS

HYDRANET® CLASSIC MAINSAIL :

- Triradial cut
- Hydranet®
- Stainless steel eyes
- UV-stabilised thread
- Draft stripe
- Radial reinforcements
- Adjustable leech line
- Loose-footed
- Fibreglass battens
- 2 reef points each with singleline reefing system.
(Third classic reef point)
- Replaces the standard mainsail
- Included in classic mast option
- Lazy bag included
- Batt-car ball-bearing track system with switch
- **Area : 71,7 m²**



SPECIFICATIONS

HYDRANET® FURLING GENOA :

- Hydranet®
- Triradial cut
- UV-stabilised thread
- Webbing strap at head
- Bolt-rope for furler
- Anti-UV protection on foot and leech
- Radial reinforcements
- Foam luff
- Draft stripe
- Webbing strap at tack
- Reefing marks
- Adjustable leech line
- Replace the standard genoa
- **Area : 88 m²**



ADVANTAGES

- High-end sail cloth material means less stretch and better performance
- Tri radial cut ensures better sail shape- and improved resistance to wear.
- Perfect for offshore sailing
- Powerful sailplan in lighter winds

SPECIFICATIONS

CODE 0

Selden continuous line furler :

- Laminate Mylar/Aramid X-Grid fabric in light grey
- Triradial cut
- Anti twist luff cord
- UV-stabilised thread
- Straps for sheet attachment
- Adjustable leech and foot lines
- Requires rigging for asymmetrical spinnaker / Code 0
- **Area : 125 m²**



ADVANTAGES

- A light wind sail designed for use between 60° and 120°
- Continue to sail when others have given up and turned on the motor
- Continuous line furler allows easy deployment and furling from the cockpit
- Ideal addition to boats with small overlapping jibs and self-tacking jibs



CODE 0: MYLAR ARAMID X-GRID

For the development of the new Code 0 sails on a continuous line furler, Jeanneau selected a sail cloth that is perfectly adapted for use in light airs. Highly resistant, light weight and able to be furled, the Mylar Aramid X-Grid has a light grey finish that is translucent.

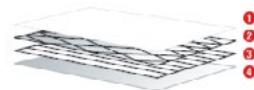
Unidirectional Aramid fibres, vacuum-bagged together between two polyester films, provide an unequalled resistance to weight ratio. This ultra light sail is easy to handle and fills with the slightest puff of wind.

Adding the X-Grid® polyester fibres at a 6° angle provides excellent bias control in all directions and improves sail shaping, as well as, resistance to tearing.

Lastly, a taffeta is added to the external laminate of the sail cloth to protect the sail from ultraviolet light and wear during furling or storage.

The Code 0 sails from Jeanneau integrate these high-performance materials to meet the exacting demands of our owners. In addition to these high-end materials, the look of these sails sets Jeanneau apart.

- 1 - Polyester film
- 2 - X-Grid® fibres
- 3 - Unidirectional Aramid fibres
- 4 - Protective taffeta

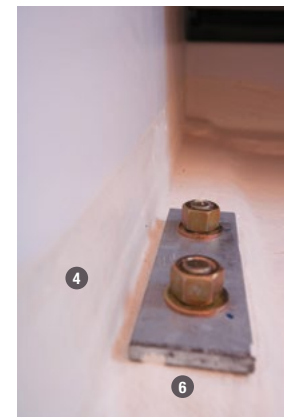


COUNTER-MOULDING

3rd generation hull structure

Jeanneau has long been known for strong and seaworthy boats. Today the technology of boatbuilding has evolved, but our commitment to this tradition has not wavered. The Jeanneau 3rd Generation Hull Structure combines the latest in fiberglass technology with modern yacht design to deliver a structural reinforcement perfectly adapted to the demands of the offshore sailor.

- ❶ High-load zones cut-out for access to the hull
- ❷ Integrated repair area at aft end of keel
- ❸ Structure is precisely placed in the hull
- ❹ Glued and relaminated to the hull for strength
- ❺ Acts as a support for the floorboards
- ❻ Keel bolts located near vertical members and through counter mould and hull
- ❼ Limber holes at hull level for efficient drainage
- ❽ Counter mould remains below level of floorboards and is not visible



ALPI WOOD - FINETEAKE

SALES POINTS:

Environmental:

- Ayous (Triplochiton scleroxylon - Sterculiacées) trees in managed forests of indigenous hardwoods are selected and cut, with a constant care given towards long term preservation of natural resources.
- Teak and other soft rainforest woods often come from geopolitically sensitive regions and are not managed in a sustainable way.

Quality:

- These ALPI wood panels are substantially more expensive and reliable than standard marine plywood. They are used by top of the line furniture manufacturers, as well as many exclusive super-yacht builders (for example Azimut and Ferretti only use ALPI wood).
- Consistency of finish and colors throughout the boat.
- Elimination of "defects" in wood panels.

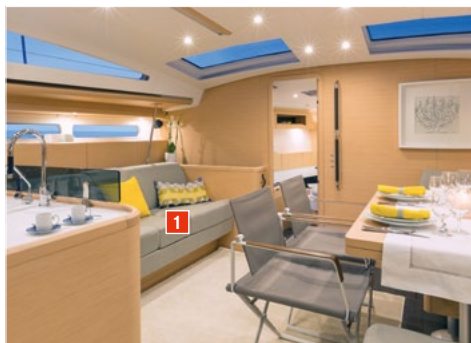
Durability:

- Harder finish that is more resistant to humidity
- Better resistance to UV
- Easier repairs as veneer is tinted through and through so clear varnishes can be used



There are four elements of decoration on board that contribute to overall design harmony:

- 1- Saloon seating and seat backs
- 2- Cabin seating
- 3- Bed skirting
- 4- Headboards

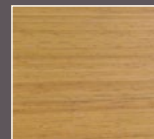


When a fabric or leather is selected, it is applied in these four areas throughout the boat.

Interior upholsterys	PVC IVORY	SEA SAND	STONE GREY	LINEN	LEATHER
Saloon seating	PVC Marlin Ivory	Alcantara Sea Sand	Alcantara Stone Grey	Libeco Souris	10 colour choices available (See the selection on the following page)
Cabin seating					
Bed skirting	Ultraleather Brisa Birch				
Headboards					

INTERIOR AMBIANCES

► STANDARD

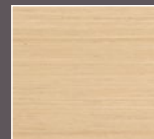


Alpi teak floorboards



Interior woodwork
Oak laminate

► OPTION



Alpi Natural Oak
floorboards



Interior woodwork
Dark oak

BEDS

► PREMIUM MATTRESS

Ultra-Fresh® antimicrobial, anti-bacterial and hypoallergenic mattress cover

LEATHERETTE WRAP

► DEVON CHOCO LEATHER



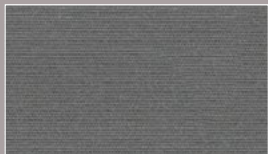


EXTERIOR UPHOLSTERY

SPRAYHOOD PROTECTION BIMINI / LAZY BAG



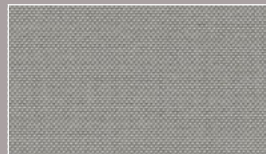
Charcoal grey



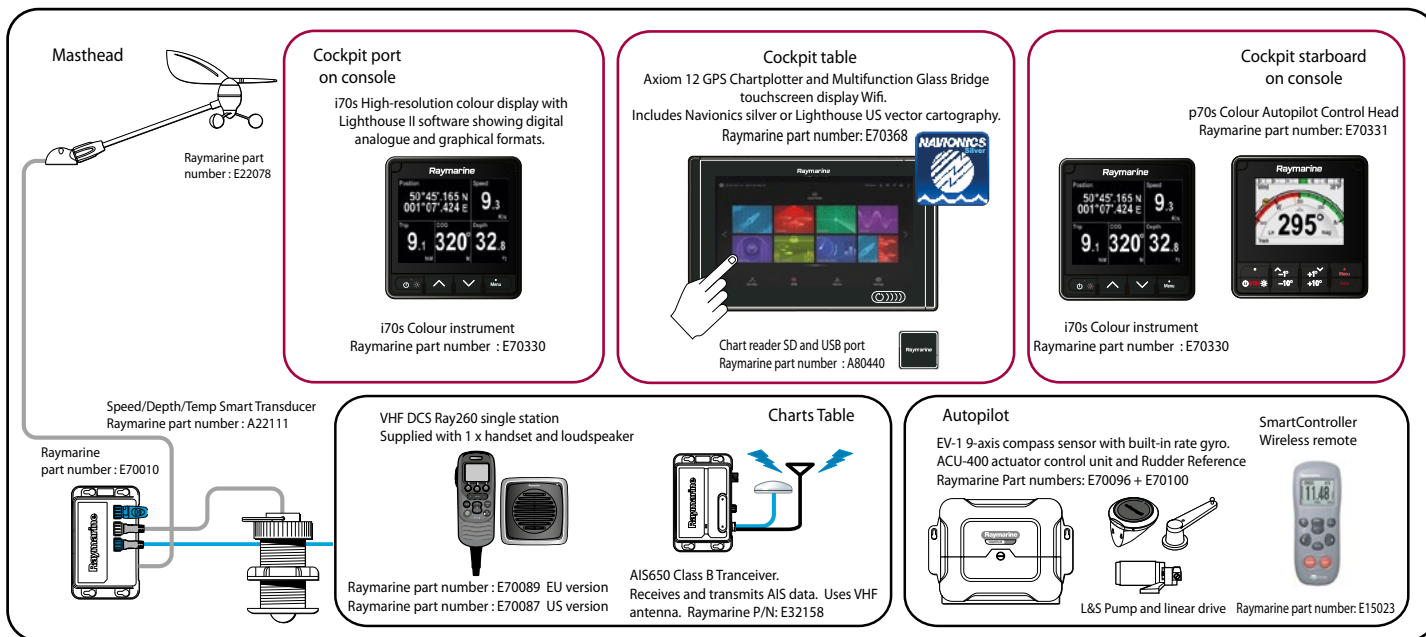
COCKPIT CUSHIONS



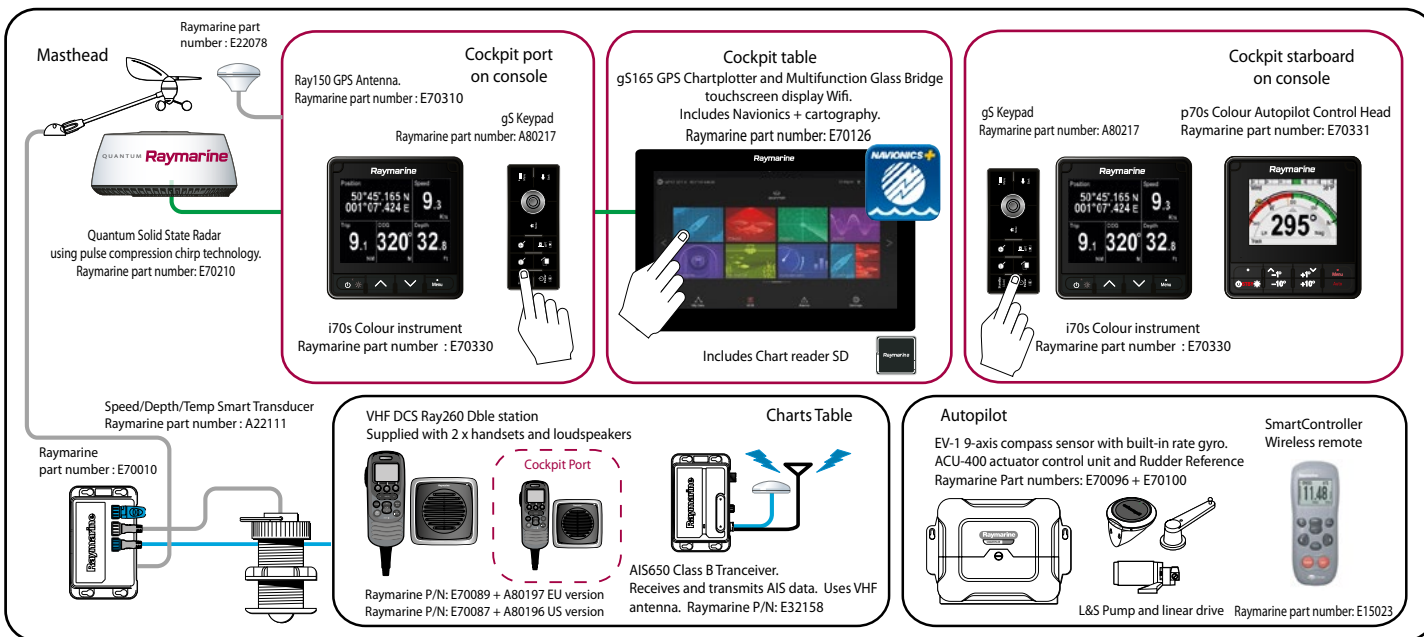
Backrests / seats : natté cadet grey



Jeanneau 58 Offshore Electronic Pack

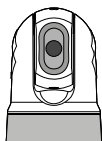


Jeanneau 58 Ocean Electronic Pack



Jeanneau 58 OPTIONS

Thermal night vision IP camera



Thermal night vision camera M232
320 x 240 resolution with a 2x zoom
Camera's pan, tilt and zoom
controls actuated by the touch screen
or keys of Axiom display .
Raymarine part number : E70354

Multifunction Glass Bridge MultiTouch 125" Display gS125 at the chart table



Touchscreen Multifunction
display Wifi. Raymarine part
number: E70125



