

Sun Odyssey

440

NEW



S U M M A R Y

- > SPECIFICATIONS
- > KEY POINTS
- > EXTERIOR
- > INTERIOR
- > TRIM LEVEL
- > PACKAGES
- > SAILS
- > CONSTRUCTION
- > UPHOLSTERY
- > VINYL HULL WRAP
- > BATTERIES
- > ELECTRONIC PACKAGES



JEANNEAU



TECHNICAL INFORMATION

Overall length with bowsprit: 13,39 m / 43' 11"
 Overall length: 13 m / 42' 7"
 Hull length: 12,64 m / 41' 5"
 Waterline length: 12 m / 39' 4"
 Beam: 4,29 m / 14'

Displacement light load with deep draft keel:
 8.561 kg / 18.874 lbs
 Standard keel draft: 2,2 m / 7' 2"
 Shoal keel draft: 1,6 m / 5' 2"

Cabins: 2 / 3 / 4
 Berths: 4 / 6 / 8 +2

Engine power: Yanmar 45 Hp / 33 kW
 Fuel capacity: 200 l / 53 US gal
 Water capacity: 330 l / 87 US gal
 Cold capacity: 130 l / 34 US gal

Sail area:

- Standard 90,3 m² / 972 Sq ft
 - Performance 98,37 m² / 1 059 Sq ft

CE category: A10 / B11 / C14 Pers
 Architects: Philippe Briand
 Piaton Bonet Yacht Design - Jeanneau Design

VERSIONS • LAYOUTS

Fixed keel version
 Shoal draft version

2 cabins / 2 heads
 3 cabins / 2 heads
 4 cabins / 2 heads

Interior woodwork in Alpi® Teak or
 Alpi® grey Cedar

Offshore cruiser, elegant and very comfortable.

EXTERIOR

Comfort and performance for passagemaking:

- Powerful, balanced and modern hull designed by Philippe Briand, that combines a long waterline length and a hard chine for speed and comfort at sea.
- Sleek deck lines, safe and ergonomic with flush hatches and integrated running rigging.
- Sail plan with a high aspect ratio. Multiple choices including: self-tacking jib, large overlapping genoa, Code 0, furling mast, etc.
- Safe and ergonomic cockpit with lines led back to helm stations.
- Innovative deck plans, with inclined slide deck for an easy circulation.

Relaxation and aesthetics:

- Large cockpit with full-function table
- Fold-down transom for easy access to the sea and sundeck (option).
- Sleek deck with curved windows, flush panels and integrated running rigging and sundeck (option).
- Extending coamings convertible into lounging area.

INTERIOR

Lighting, volume and ventilation:

- A multitude of ports and hatches for ventilation and light
- 3 distinct zones in the saloon designed to allow each to be used independently without constricting movement throughout the interior
- A functional chart table
- Light and luxury down below with solid wood, mat varnish, polished-stainless steel, leather and a full selection of interior fabrics.
- A safe and central galley in sailing

Lots of features:

- All the key features of the Sun Odyssey range concentrated on the same boat
- Plenty of choices available: Different interior layouts, sail plans, keel and fabrics allow each owner a high level of personalisation
- Choice of woodwork : Alpi® Teak or Alpi® grey Cedar



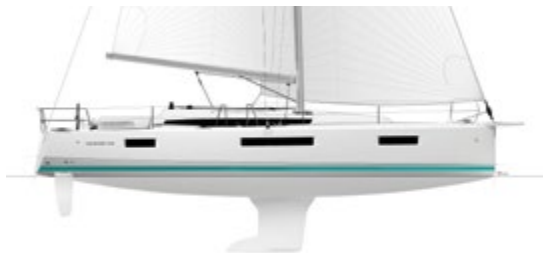
Alpi® Teak



Alpi® grey Cedar

HULL AND KEEL: modern and balanced

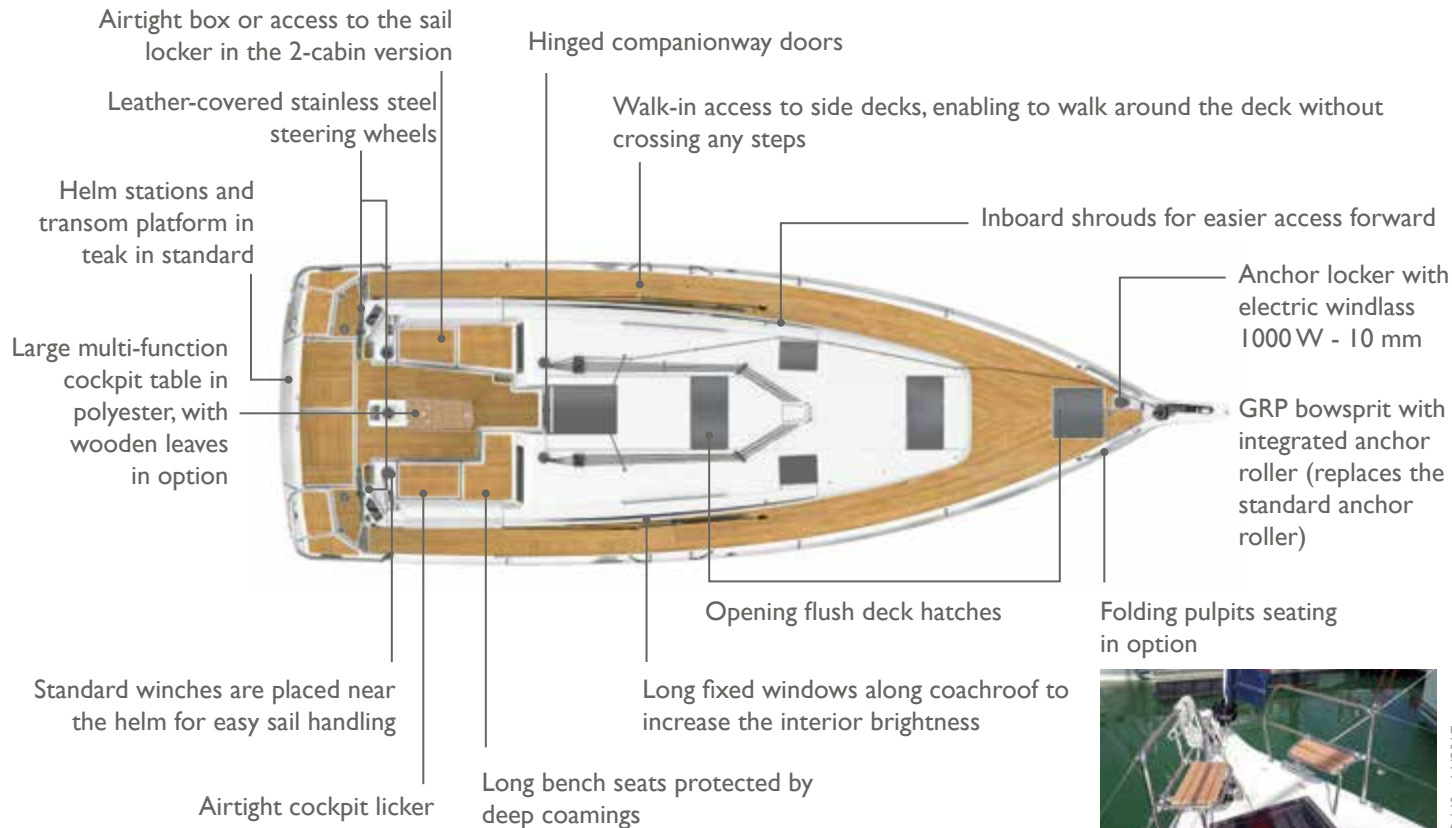
- **Philippe Briand design**
- **Deep keel** (2.20 m / 7'3") or shoal keel (1.60 m / 5'3")
- **Twin rudders** with self-aligning roller bearings and textile lines.
- **Hard chine on hull** creates stability and enhances interior volume.
- **Long water line** provides performance under sail and power.
- **Moderate freeboard** lends a beautiful and sleek look to the hull along with the 8 hull ports and hard chine.



DECK AND COCKPIT: Liveability, comfort and safety

- **Twin helm steering moved far aft**, keeps the cockpit clear and gives easy access to the transom.
- **Harken deck hardware**: winches, blocks, tracks designed to make sail handling ease from the helm.
- **Easy access to the sea** thanks to a wide drop-down aft platform in standard.
- **Large cockpit table** with storage, lighting and icebox.
- **Flush hatches and integrated running rigging** gives the deck a sleek look and makes movements onboard safer.
- **Lots of storage**: 2 lateral lockers, 2 large lockers under the helm stations, 1 large locker for the optional generator. Forward sail locker and deep anchor locker.





COCKPIT

Large aft fold-down swim platform with telescopic ladder.
Opening system electric, with 2 remote controls, optional

A large locker on the cockpit floor that can be used for the optional generator



Gas locker : scalable for
2 bottles of 2.7 kg / 6 lbs or
a large 13 kg / 29 lbs bottle.

Space for flush mounted GPS
at each helm

Halyard bags in the cockpit
with stainless steel frame,
at each helm

Fixed coamings with ideal
height for comfort and
safety. Extending coamings
convertible into lounging
area, in option

Cushions for cockpit
available for each set up

Opening and fixes large
hull ports for light
and ventilation



Space provided
for liferaft, easily
accessible



COCKPIT (continued)

The coamings:

Innovative on this type of sailboat, extending coamings are convertible into lounging area.

This ergonomic prowess allows to benefit from a unique relaxation zone on a 45-foot boat.



Multi-function cockpit table:

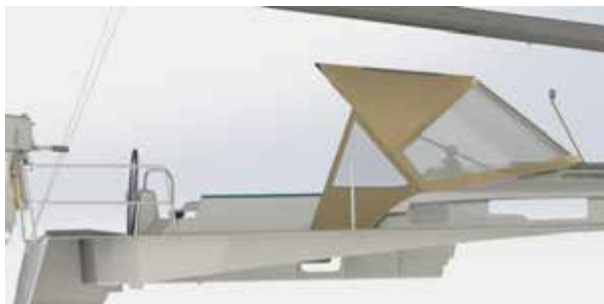
- Throttle lever
- Engine panel
- Bottle storage
- Cup holders
- Compass
- Ice box
- Optional portable 12V fridge in the cockpit table



COCKPIT (continued)

Large cockpit sprayhood, with high transparency windscreen and LED cockpit lighting. Cockpit bimini with stainless steel bows, connecting fabric between bimini and sprayhood. The bimini is fixed on the stern pulpits.

Cockpit enclosure kit, fitted on the sprayhood and bimini allowing to close the cockpit without losing traffic on the side decks.



Sprayhood



Sprayhood and bimini



Sprayhood, bimini and connecting fabric

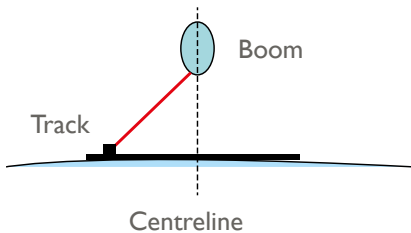


Sprayhood and cockpit enclosure kit

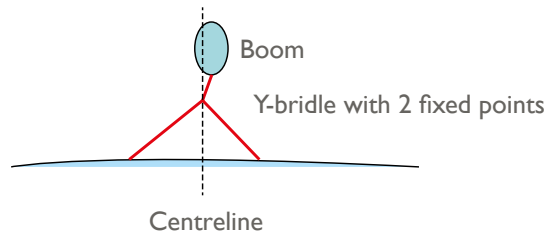
RIGGING



Here is the track system used by Sun Odyssey 449. Putting the boom in the axis requires adjustment of the track with each tack.



Y-bridle system used by the Sun Odyssey 440. By bringing the pulleys closer to the boom, the bridle allows for good boom angulation, similar to that of a Mainsail track without any adjustments to be made during the tacks.



A TRULY MULTIPURPOSE BOWSPRIT

Better look:

- Modern and elegant
- Sculpted fiberglass part flows into hull lines



Better anchoring:

- Stainless steel anchor fitting is positioned further from the bow to ensure more clearance
- Anchor roller is closer to the centerline for easier anchoring and retrieval
- Fixed, metallic bobstay protects the bow and stays out of the way when anchoring

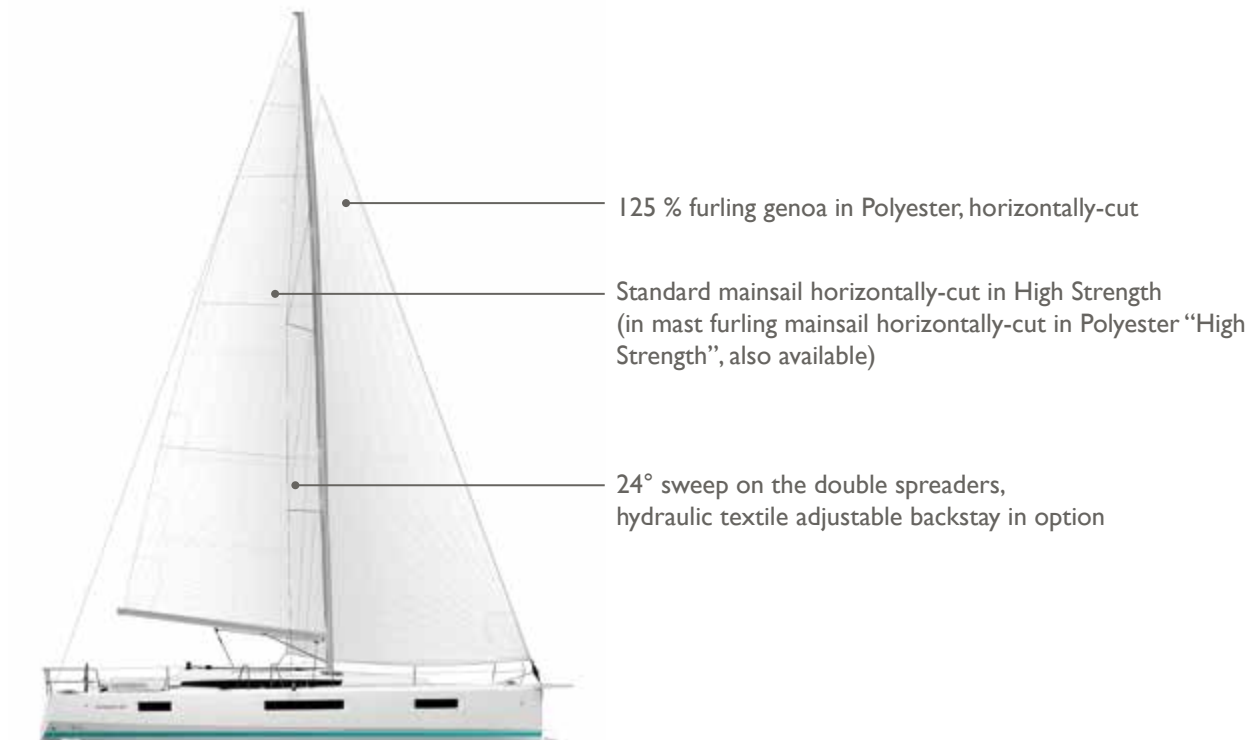


Better sailing:

- 1 - Reinforced attachment point for Code 0
- 2 - Additional tack point attachment at the end of the bowsprit for larger asymmetric spinnakers



SAIL PLAN - STANDARD - HIGH STRENGTH SAIL



SAIL PLAN - CATHEDRAL RIGGING

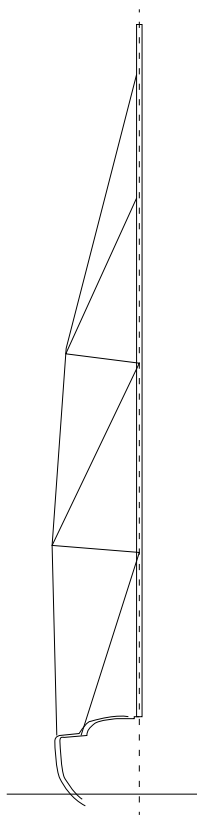
Cathedral rigging:

2 levels of spreaders but 4 anchoring points on the mast.

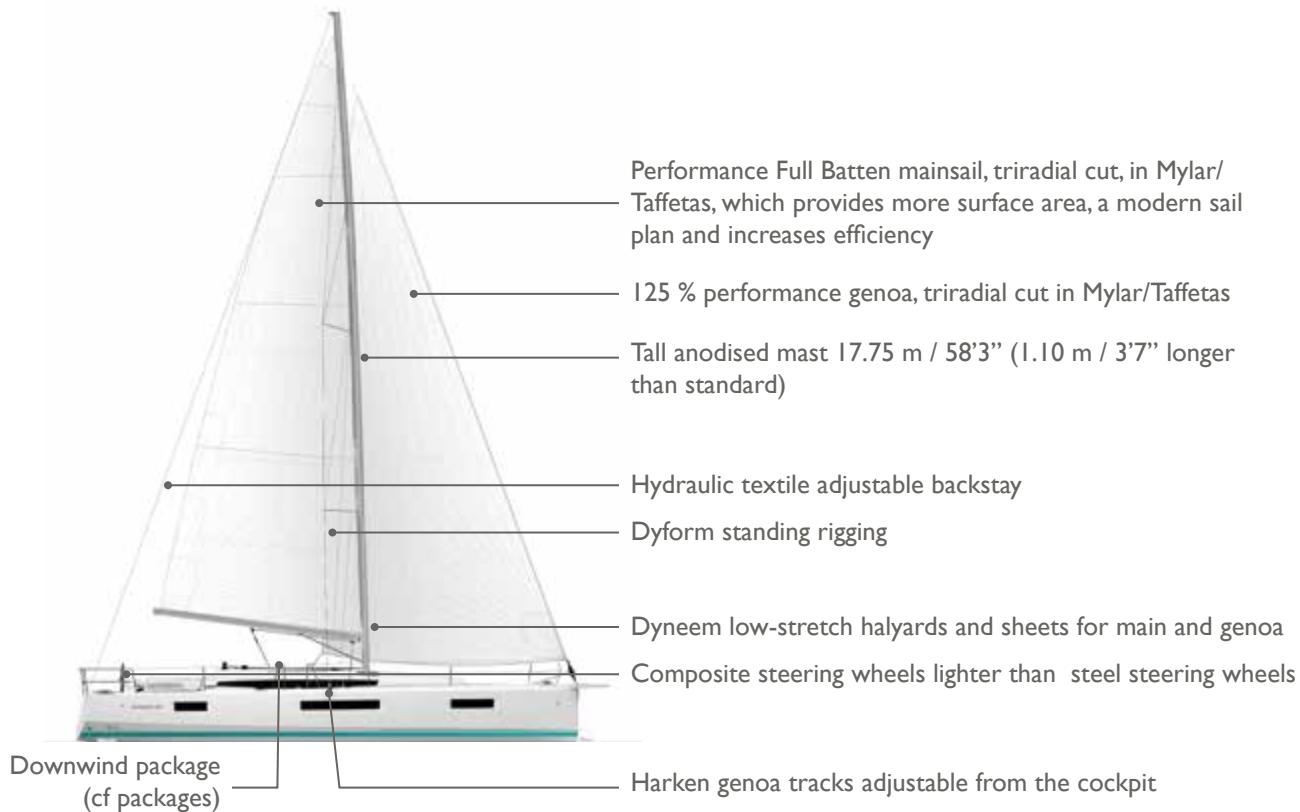
Allows you to have the same mast hold as a rigging with 3 levels of spreaders, without dunnage, overweight, and the complexity of adjusting a three-stage rigging.

Split rigging:

the inboards shrouds (DI) have been retracted to offer an better traffic on the side decks, and to allow genoa with greater overlap.



SAIL PLAN - PERFORMANCE



INTERIOR FEATURES: VOLUME, STYLE AND COMFORT

Modern and performante hull

Benefit: performance thanks to the powerful hull and volume of the cross section

Spacious interior with choice of 3 different interior layouts.

A maximum of services in the saloon, with real dedicated living areas, a multitude of practical and aesthetic details and an easy circulation, one-level interior with no door sills.

8 large and fixed hull ports, long fixed and curved windows along coachroof, 6 opening ports and 6 flush deck hatches

Benefit: ventilation, right natural lighting and views of the sea.

Wide, double doors to the forward cabin

Benefit: Afford privacy when closed and contribute to the airy interior atmosphere when open.

2 cabins and 2 heads with a workshop

Benefit: double access from the interior and the cockpit, the workshop can accommodate additional appliances. The aft cab is a XXL version cabin.

3 cabins and 2 heads version

Each cabin offers the same comfort with 1.60 m x 2 m (5'3" x 6'7") berths.

4 cabins version

The solution for the most numerous crews and charter companies

LED lighting

Wood options:

INTERIOR WOOD



FLOOR



INTERIOR LAYOUTS

2 cabins / 2 heads version



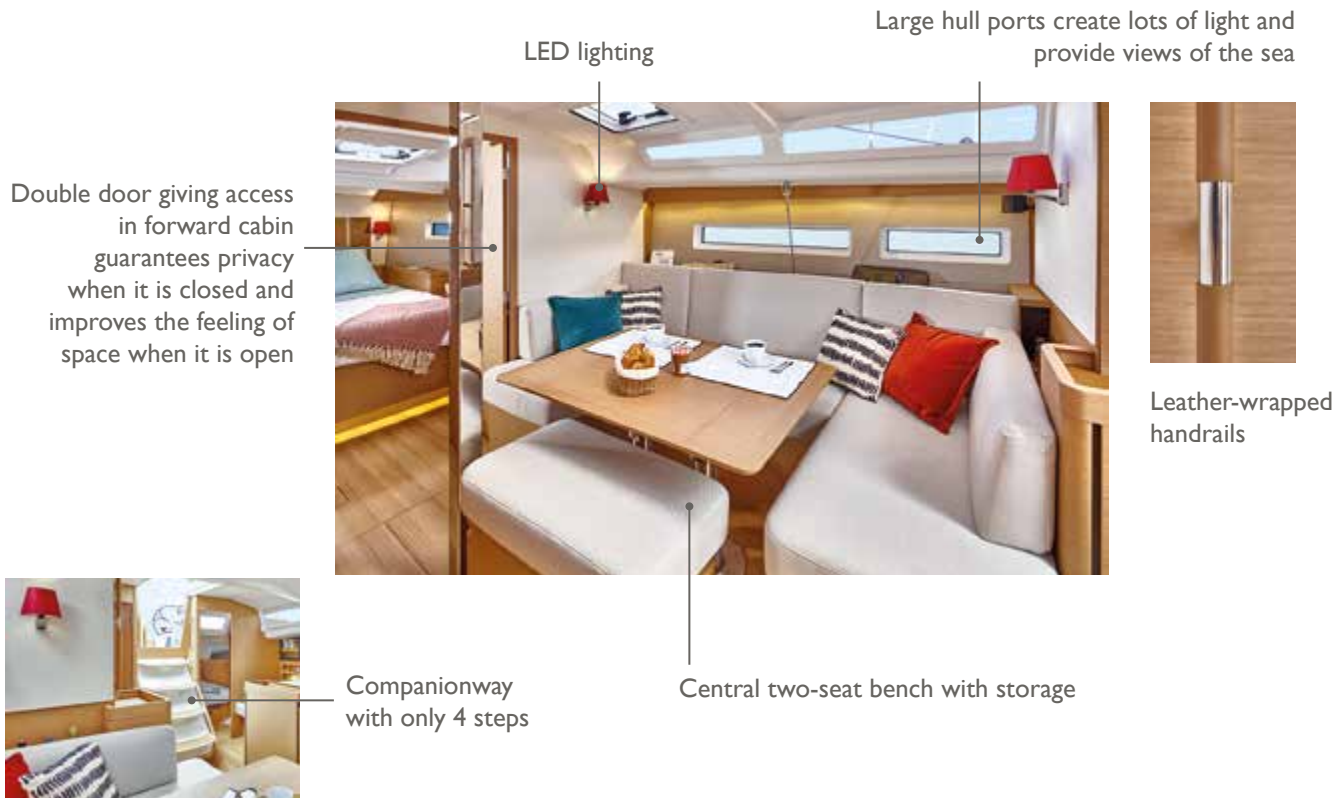
3 cabins / 2 heads version



4 cabins / 2 heads version



SALOON



SALOON (continued)

Long fixed windows along coachroof to increase the interior brightness

Large storage behind backrests

Zone de rangement sous la banquette



Bottles storage

Large table with 2 removable aluminium legs, for up to 6 persons ("Deluxe" folding table on telescopic legs in option)

Convertible berth in saloon (option including 2 short legs)



GALLEY

The central U-shaped galley, located in the most stable space on the boat, easily distributes the space between the saloon and cockpit



GALLEY (continued)

Push up micro wave under the work surface, in option



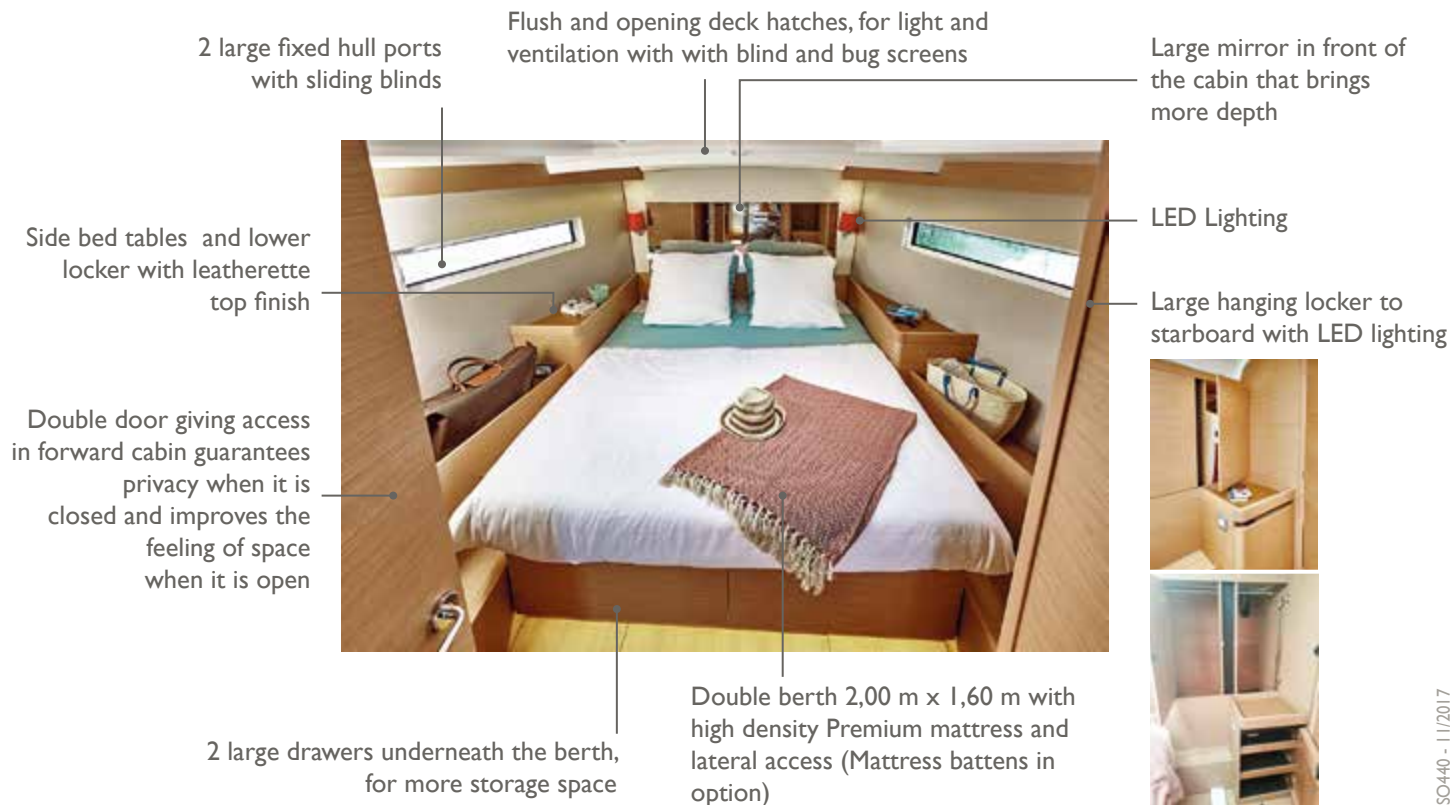
Opening port for stove ventilation

Fridge 130 L / 34 US gal with front opening

CHART TABLE ON PORT SIDE (3 cabins and 2 heads version)



FORWARD CABIN



FORWARD CABIN - HEAD

Large deck hatch,
for light and ventilation

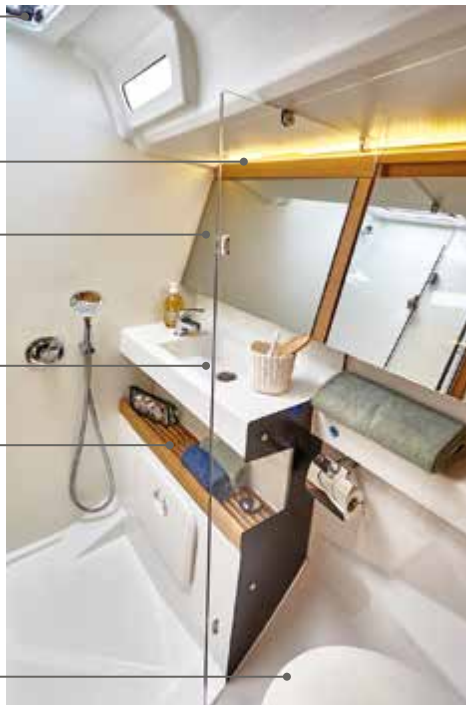
Indirect LED lighting

Large double mirror

Shower separated with
a plexiglas door

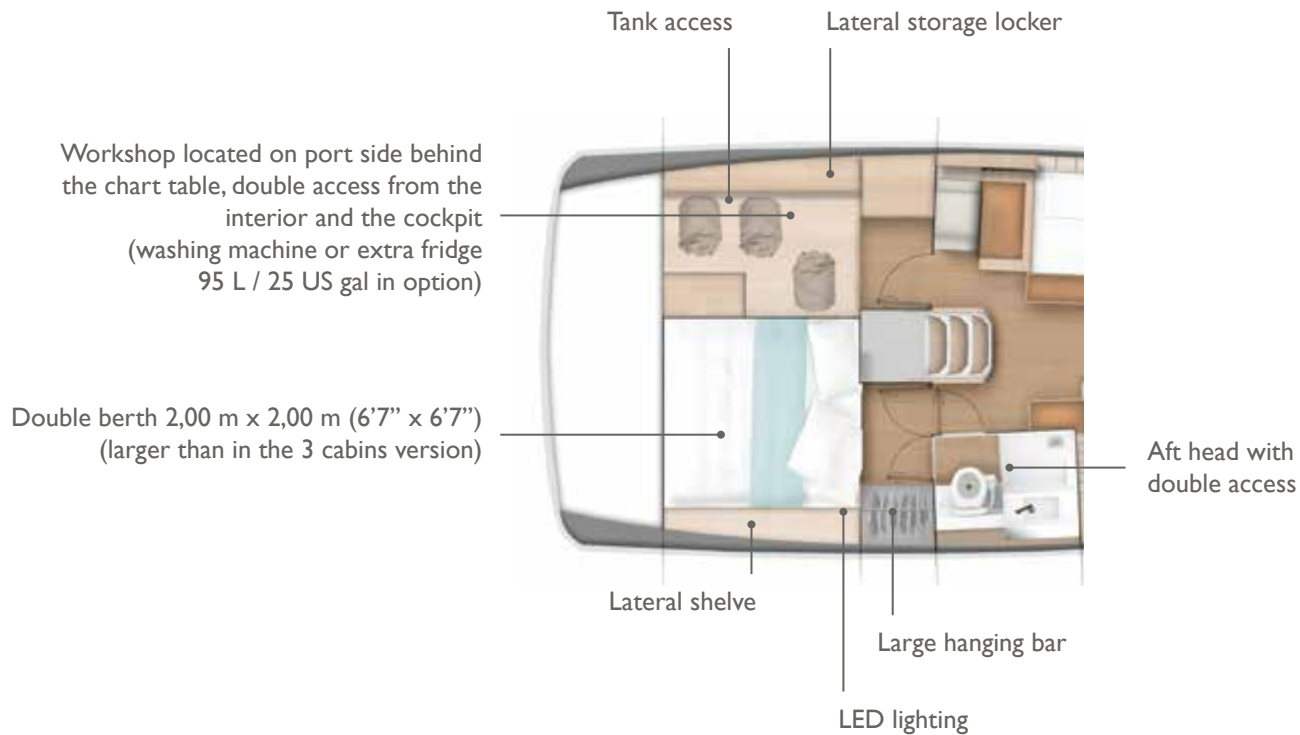
Teak shelf with fiddles

Large marine toilet
with manual pump.
Electric toilets in option

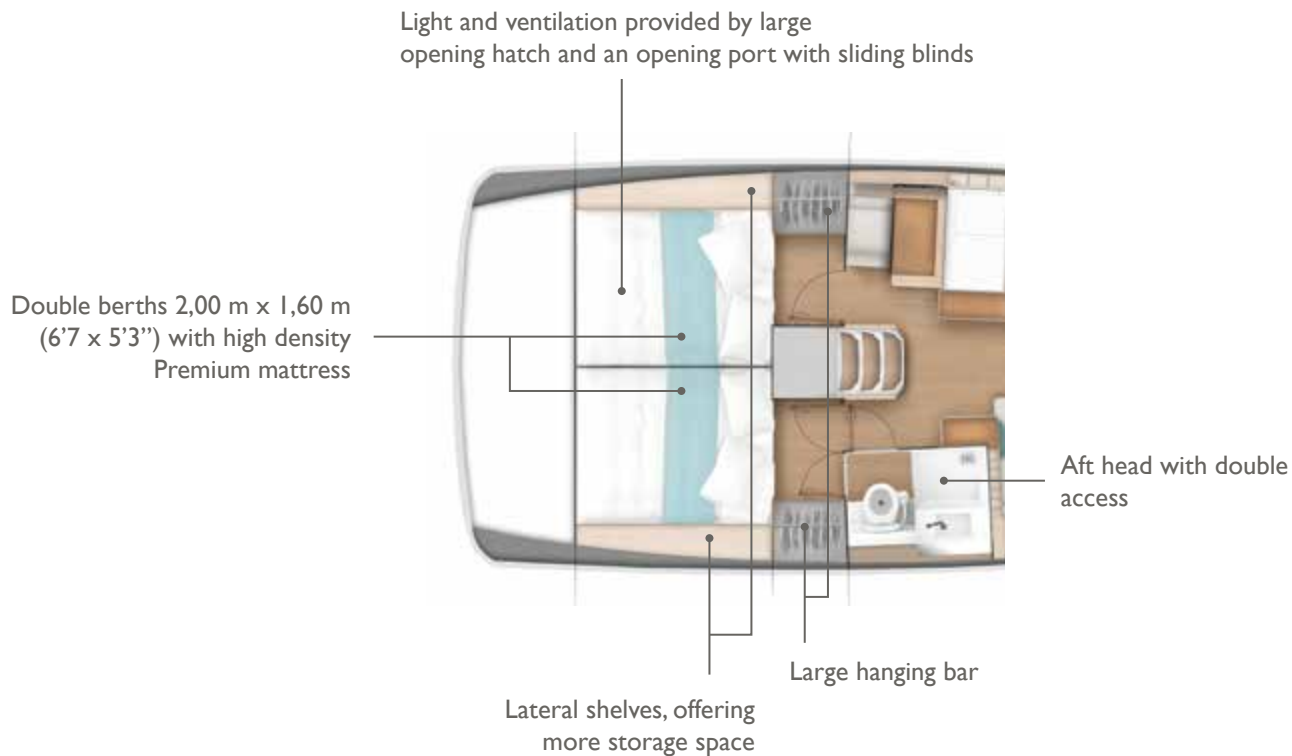


Storage with towel shelf

2 CABINS VERSION

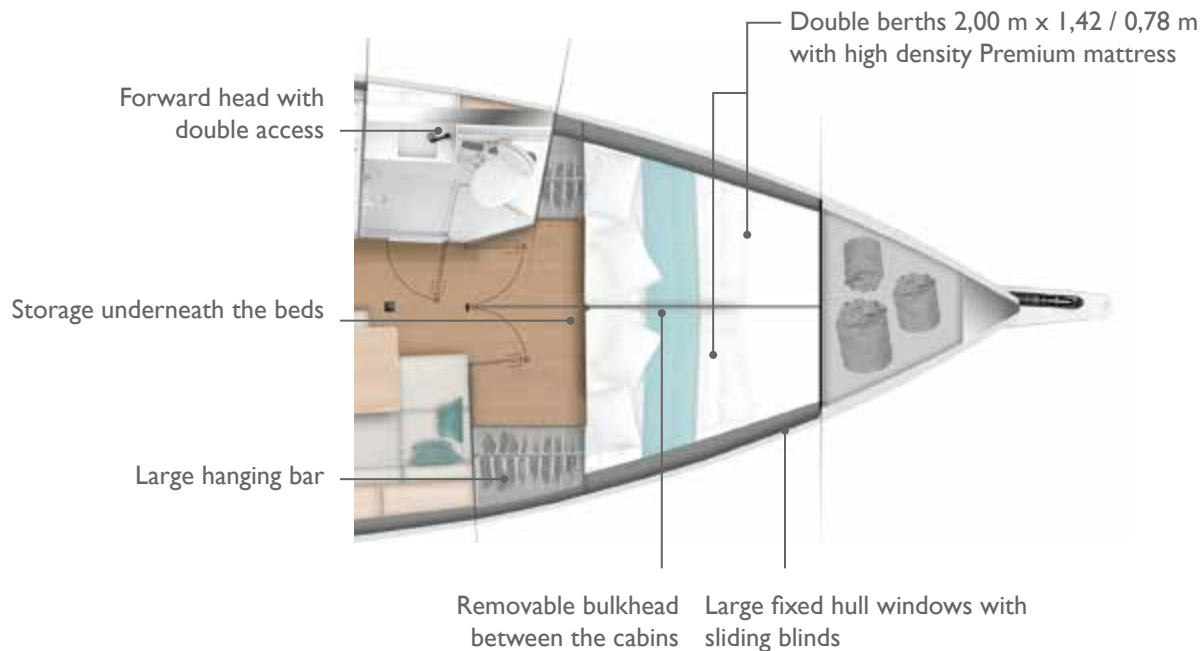


3 CABINS VERSION



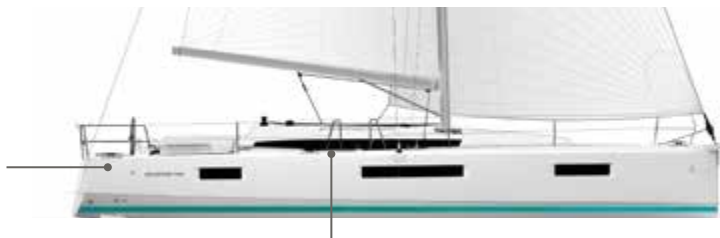
4 CABINS VERSION

Same aft layout as 3 cabins version



PREMIERE TRIM LEVEL: ALL VERSIONS

40 A battery charger for
12V battery banks



GRP bowsprit
with integrated
anchor roller

Mid ship cleats

LED courtesy lighting in the cockpit

Protective GRP eyebrow for the long
acrylic roof windows

Second windlass control with chain
counter, installed in the cockpit

2 burner cooker and oven
with grill function

Navicolor battery monitoring

Additional service batteries
2 X 115 Ah



Halyard bags in the cockpit
with stainless steel frame



SO440 - 11/2017

PREFERENCE TRIM LEVEL*: 2 AND 3 CABINS

*Préférence Trim level includes Première Trim Level



Shades and screens for hatches in the saloon

Sound deadening lining in cabinets



Upholstered bulkheads



Indirect LED lighting, and lamps on bulkhead

Shades for windows and ports in the saloon

Signature clock and barometer set at the chart table

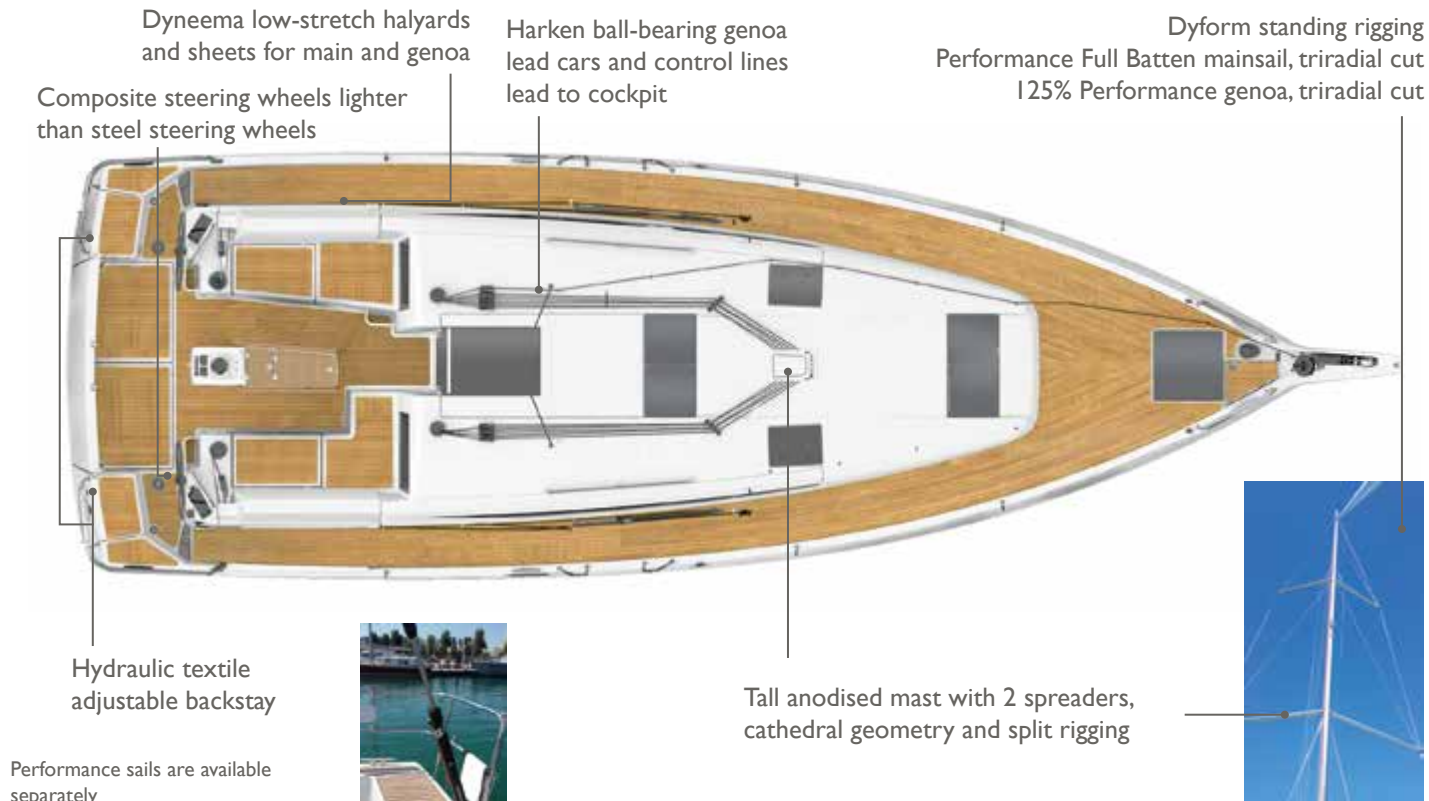


Wine storage locker under floorboards



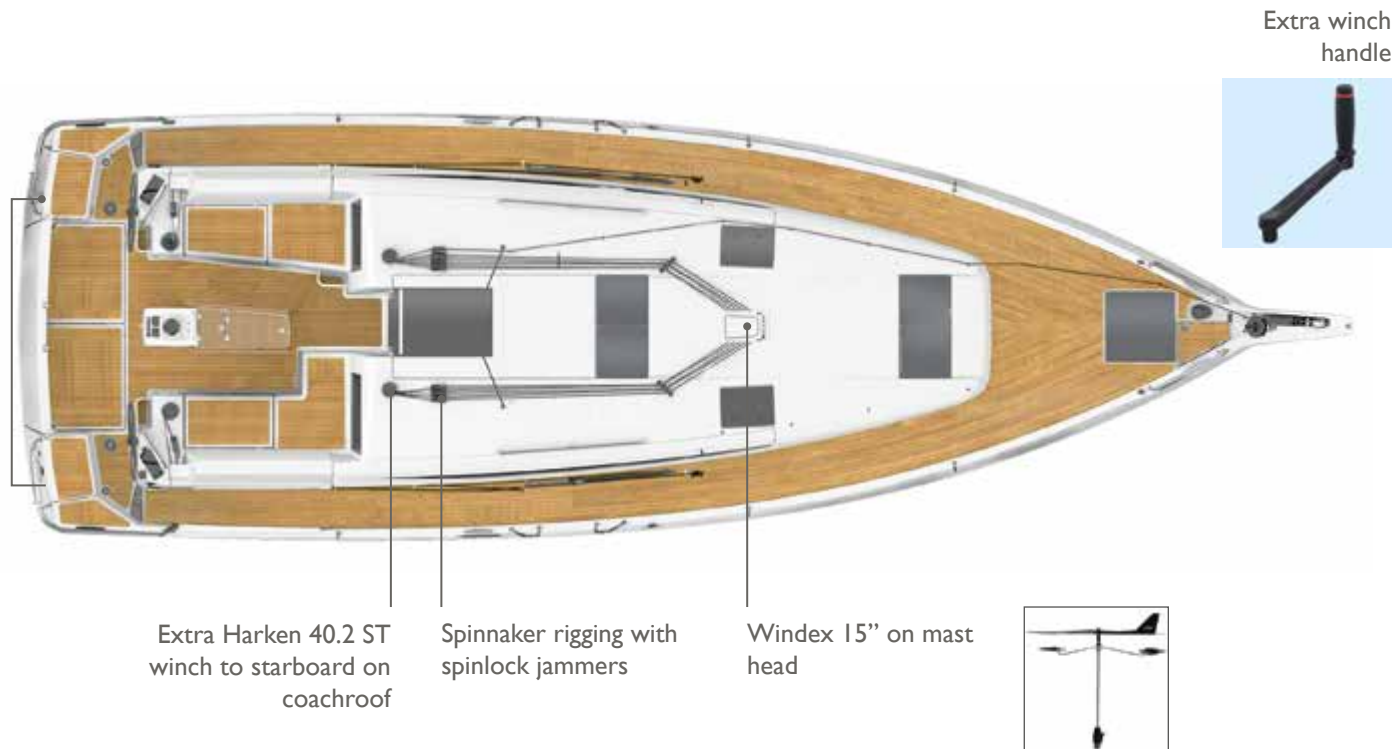
PERFORMANCE PACKAGE*

*Performance package includes Downwind package



DOWNWIND PACKAGE

Halyards and sheet for asymmetrical spinnaker / Code 0 (2 polyester halyards, 1 sheet and 1 tack line in Dyneema®, pulleys on mast step and side decks)



ENTERTAINMENT AUDIO PACKAGE

RA70N Fusion player
(Radio / USB / Bluetooth...)
at the chart table



Bose® speakers in the saloon +
Bose® subwoofer under settee

Speakers in the cockpit



ENTERTAINMENT VIDEO PACKAGE - EXCLUSIVELY IN 2 OR 3 CABINS VERSIONS

DVD player Fusion MS-AV750
(CD / DVD / USB / Bluetooth...)
at the chart table



Bose® speakers in the
saloon + Bose® subwoofer
under settee



TV LED 22" in the saloon +
TV antenna for mast fitting



Speakers in the cockpit



VOYAGER PACKAGE - EXCLUSIVELY IN 2 OR 3 CABINS VERSIONS

High transparency sprayhood with LED lighting - Oyster or Taupe



Outboard engine bracket

Releasable forestay + deck fittings

Solar panel on coachroof with charging relay



Seawater / freshwater foot pump in the galley



CONVERTIBLE COCKPIT PACKAGE

Extending coamings convertible into lounging area



Starboard infill cushion for I-seating area - Oyster or Taupe

Cushions for cockpit and sunbathing areas

EXTERNAL GALLEY PACKAGE

Cockpit sink with hot & cold water



Cockpit sink with hot & cold water



SAIL AND RIG PLANS: Sails for every sailor

Select the sail plan that best fits your style :

- **High aspect ratio rig** for maximum performance while limiting the loads on the sheets.
- **Inboard shrouds and genoa tracks** allow better trim and easy circulation on the side decks.
- **Code 0** offered as an option for sailing in light wind conditions.

SPECIFICATIONS

SEMI FULL BATTENED MAINSAIL:

- Dacron®
- Horizontal panels
- Stainless steel eyes
- UV-stabilised thread
- Draft stripe
- Radial reinforcements
- Adjustable leech line
- Loose-footed
- 3 reef points each with singleline reefing system

• **Area: 45,15 m² (485,99 Sq ft)**



SHORT OVERLAPPING FURLING GENOA (110%):

- Dacron®
- Horizontal panels
- UV-stabilised thread
- Webbing strap at head
- Bolt-rope for furler
- Anti-UV protection on foot and leech
- Draft stripe
- Webbing strap at tack
- Reefing marks
- Adjustable leech line

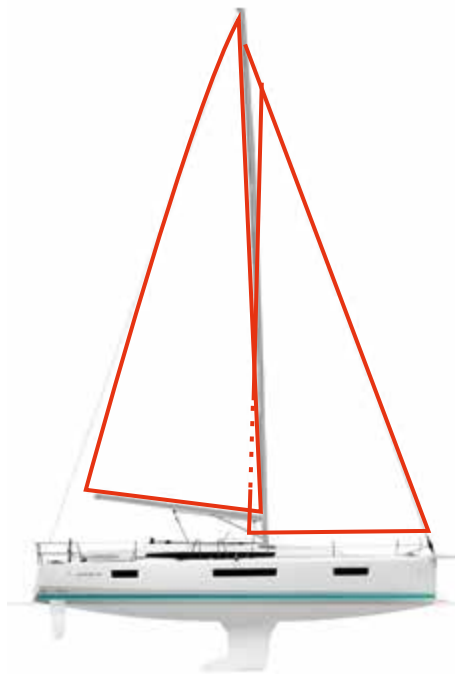
• **Area: 45,15 m² (485,99 Sq ft)**



BENEFITS

- High-aspect rig for maximum performance
- Easy to handle sail plan
- Versatile and balanced sail plan at all sailing angles

I = 15,30 m / 50'2"
J = 5,17 m / 17'
P = 15,30 m / 50'2"
E = 5,05 m / 16'7"

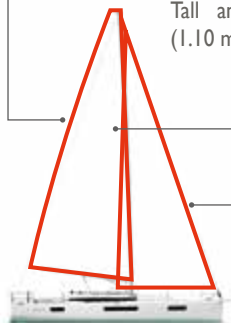


PERFORMANCE VERSION

PERFORMANCE MAINSAIL:
49,22 m² (529,80 Sq ft)

PERFORMANCE GENOA: 49,15 m² (529,05 Sq ft)

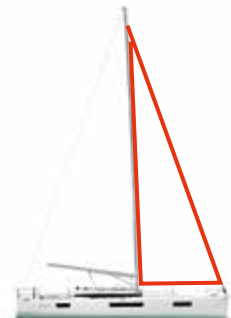
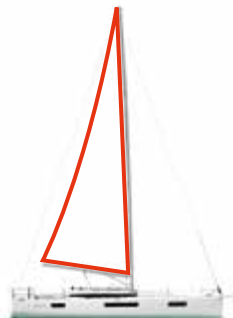
Tall anodised mast 17.75 m / 58'3"
(1.10 m / 3'7" longer than standard)



A LA CARTE OPTIONS

FURLING MAINSAIL: 35,48 m² (381.90 Sq ft)

SELF-TACKING JIB: 30,15 m² (324.53 Sq ft)



PERFORMANCE SAILS : MYLAR TAFFETAS X-GRID

Working in collaboration with Dimension-Polyant and Technique Voiles, Jeanneau has developed a new Mylar Taffeta X-Grid fabric for the Performance range.

The triradial construction of the sail contributes to superior shape holding, but other forces can act on the individual panels. By using a specially-designed X-Grid® of fibres angled at 6° laminated into the fabric, better bias control can be achieved which makes the sail more resistant to deformation and aging.

The performance of these new fabrics provides a more stable sail cloth that is lighter, easier to handle, with better shape control over time.

These new Performance sails are easily recognisable; they include a taffeta laminate that is light grey that gives them a very “hi-tech” look.

- 1 - Protective taffetas
- 2 - Polyester film
- 3 - X-Grid® fibres
- 4 - Polyester scrim



SPECIFICATIONS

FURLING MAINSAIL:

- Polyester High Strength
- Horizontal panels
- UV-stabilised thread
- Radial reinforcements
- Draft stripe
- Adjustable leech line
- UV protection at sheet attachment
- Replaces the standard mainsail
- Included in furling mast option
- **Area: 35,48 m² (381,90 Sq ft)**



BENEFITS

- Easy handling
- Quick furling of the sail
- Easy reefing
- Same height as the classic mainsail
- Compatible with classic genoa or self-tacking jib

SPECIFICATIONS

SELF-TACKING FURLING JIB:

- Polyester High Strength
- Horizontal panels
- UV-stabilised thread
- Webbing strap at head
- Bolt-rope for furler
- Anti-UV protection on foot and leech
- Draft stripe
- Radial reinforcements
- Webbing strap at tack
- Adjustable leech line
- Replaces the standard genoa
- Requires deck hardware for self-tacking jib
- **Area: 30,15 m² (324,53 Sq ft)**



BENEFITS

- Hands-free tacking
- Great up-wind performance
- Perfect for short-handed sailing

SPECIFICATIONS

CODE 0

Selden continuous line furler:

- Laminate Mylar/Aramid X-Grid fabric in light grey
- Triradial cut
- Anti twist luff cord
- UV-stabilised thread
- Straps for sheet attachment
- Adjustable leech and foot lines
- Requires rigging for asymmetrical spinnaker / Code 0
- **Area: 81.85 m² (881,03 Sq ft) for classic mast**
88.27 m² (950,13 Sq ft) for tall mast



BENEFITS

- A light wind sail designed for use between 60° and 120°
- Continue to sail when others have given up and turned on the motor
- Continuous line furler allows easy deployment and furling from the cockpit
- Ideal addition to boats with small overlapping jibs and self-tacking jibs



CODE 0 : MYLAR ARAMID X-GRID

For the development of the new Code 0 sails on a continuous line furler, Jeanneau selected a sail cloth that is perfectly adapted for use in light airs.

Highly resistant, light weight and able to be furled, the Mylar Aramid X-Grid has a light grey finish that is translucent.

Unidirectional Aramid fibres, vacuum-bagged together between two polyester films, provide an unequalled resistance to weight ratio. This ultra light sail is easy to handle and fills with the slightest puff of wind.

Adding the X-Grid® polyester fibres at a 6° angle provides excellent bias control in all directions and improves sail shaping, as well as, resistance to tearing.

Lastly, a taffeta is added to the external laminate of the sail cloth to protect the sail from ultraviolet light and wear during furling or storage.

The Code 0 sails from Jeanneau integrate these high-performance materials to meet the exacting demands of our owners. In addition to these high-end materials, the look of these sails sets Jeanneau apart.

- 1 - Polyester film
- 2 - X-Grid® fibres
- 3 - Unidirectional Aramid fibres
- 4 - Protective taffeta



SO440 - 11/2017

PRISMA PROCESS



Leader in vacuum bagging technology for the construction of racing boats, JTA developed an resin injection process applicable to the construction of cruising boats. By using advanced engineering, precisely positioned layers of glass fabric and mat and specially developed core materials, Jeanneau is able to mould a deck to exacting tolerances.

Jeanneau's leadership in this domain gives it a substantial advantage over its competitors and ensures unequalled quality to the customer.

This 21st century technology allows Jeanneau to manufacture complex fibreglass parts with:

- Perfect finish on both sides (no need for a counter mould)
- Reduced weight (providing the sailboat better stability/performance)
- Increased strength and rigidity of the piece (quality of lay-up)
- Reduction by 90% of VOC emissions (environmentally-friendly)
- Optimum working conditions for the production team (no contact with resins/catalysts)
- High quality parts (precise control of gelcoat, core materials and resin injection)

The deck of the Jeanneau 54 is the largest mass-produced injection fibreglass part in the world.



COUNTER-MOULDING

3rd generation hull structure

Jeanneau has long been known for strong and seaworthy boats. Today the technology of boatbuilding has evolved, but our commitment to this tradition has not wavered. The Jeanneau 3rd Generation Hull Structure combines the latest in fiberglass technology with modern yacht design to deliver a structural reinforcement perfectly adapted to the demands of the offshore sailor.

- ❶ High-load zones cut-out for access to the hull
- ❷ Integrated repair area at aft end of keel
- ❸ Structure is precisely placed in the hull
- ❹ Glued and relaminated to the hull for strength
- ❺ Acts as a support for the floorboards
- ❻ Keel bolts located near vertical members and through counter mould and hull
- ❼ Limber holes at hull level for efficient drainage
- ❽ Counter mould remains below level of floorboards and is not visible



ALPI WOOD

SALES POINTS:

Environmental:

- Ayous (Triplochiton scleroxylon - Sterculiacées) trees in managed forests of indigenous hardwoods are selected and cut, with a constant care given towards long term preservation of natural resources.
- Teak and other soft rainforest woods often come from geopolitically sensitive regions and are not managed in a sustainable way.

Quality:

- These ALPI wood panels are substantially more expensive and reliable than standard marine plywood. They are used by top of the line furniture manufacturers, as well as many exclusive super-yacht builders (for example Azimut and Ferretti only use ALPI wood).
- Consistency of finish and colors throughout the boat.
- Elimination of “defects” in wood panels.

Durability:

- Harder finish that is more resistant to humidity
- Better resistance to UV
- Easier repairs as veneer is tinted through and through so clear varnishes can be used



SALOON : 9 choices possible



STANDARD

► WEISS



OPTION

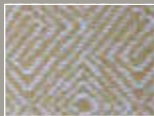
► OCEAN



► STRAWBERRY



► PINEAPPLE



► SWAN



► SABLE



► TURQUOISE



► STONE



► CAFÉ



INTERIOR WOOD

► Standard :
Alpi® Teak



► Option :
Alpi® grey Cedar



FLOOR

► Standard:
Laminate ceruse
light Oak



► Option: Dark Oak
(available in summer
2018)



WORK SURFACE

► Corian



BEDS

► Matelas
Premium

Removable mattress
cover fabric with Ultra-
Fresh® is antimicrobial,
anti-bacterial and non-
allergenic

EXTERIOR UPHOLSTERY

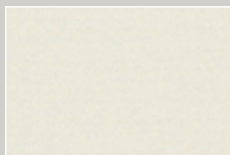
SPRAYHOOD PROTECTION BIMINI / LAZY BAG



► Sunbrella Taupe



► Oyster



COCKPIT CUSHIONS



► Sunbrella sling Taupe



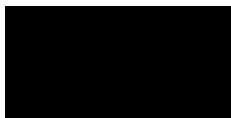
► Oyster



**Jeanneau proposes 10 choices oh hull colours and finishes.
Customize your boat !**

HULL WRAPPING

► Gloss metallic black



► Brushed titanium



► Gloss metallic dark bleu



► Matte metallic frosty blue



► Pearl dark green



► Matte metallic blaze orange



► Gloss metallic brown



► Gloss burgundy



► Gelcoat blanc



► Champagne



ADVANTAGES OF VINYL HULL WRAPPING

- Customized
- Unique
- Less expensive than paint
- Repairable
- Many colors and finishes
- Removable
- Easy for the resale

**To complete this offer, 45 choices of hull
striping are available**

HULL STRIPING

► Gloss metallic black



► Brushed titanium



► Gloss metallic dark bleu



► Blanc



► Champagne



NEW OPTION: LITHIUM BATTERIES

EPSILON – TECHNOLOGY LIFEPO4



GREAT AUTONOMY

100% of useable energy



LIGHT WEIGHT!

With equivalent energy:
More than 65% in weight gain
= reduced volume!



MAXIMUM SERVICE LIFE

~ 5 000 cycles



TOLERANCE TO HIGH TEMPERATURES



OPTIMUM CONFORT

Compatible with powerful
230V AC/DC inverters!
NO NEED TO COMPROMISE!



SUPER-FAST CHARGING

- 2 hours when under power
1 hour when charging with solar cells
in optimal conditions



PEACE OF MIND

Very low self-discharge,
store your battery safely for
several months

Number of domestic batteries 90 Ah Lithium

Sun Fast 3200	2
Sun Fast 3600	2

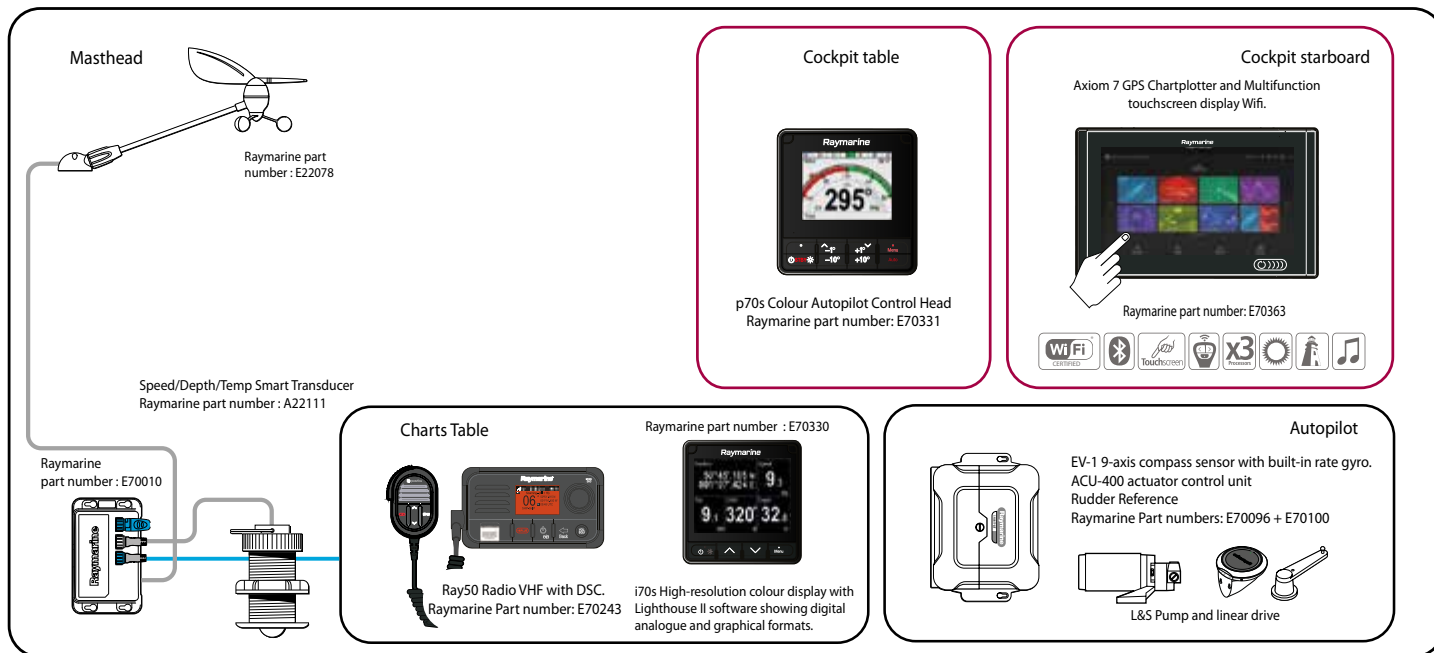
Sun Odyssey 349	1
Sun Odyssey 389	1
Sun Odyssey 419	2
Sun Odyssey 440	2
Sun Odyssey 490	3

Sun Odyssey 449	2
Sun Odyssey 479	3
Sun Odyssey 519	3

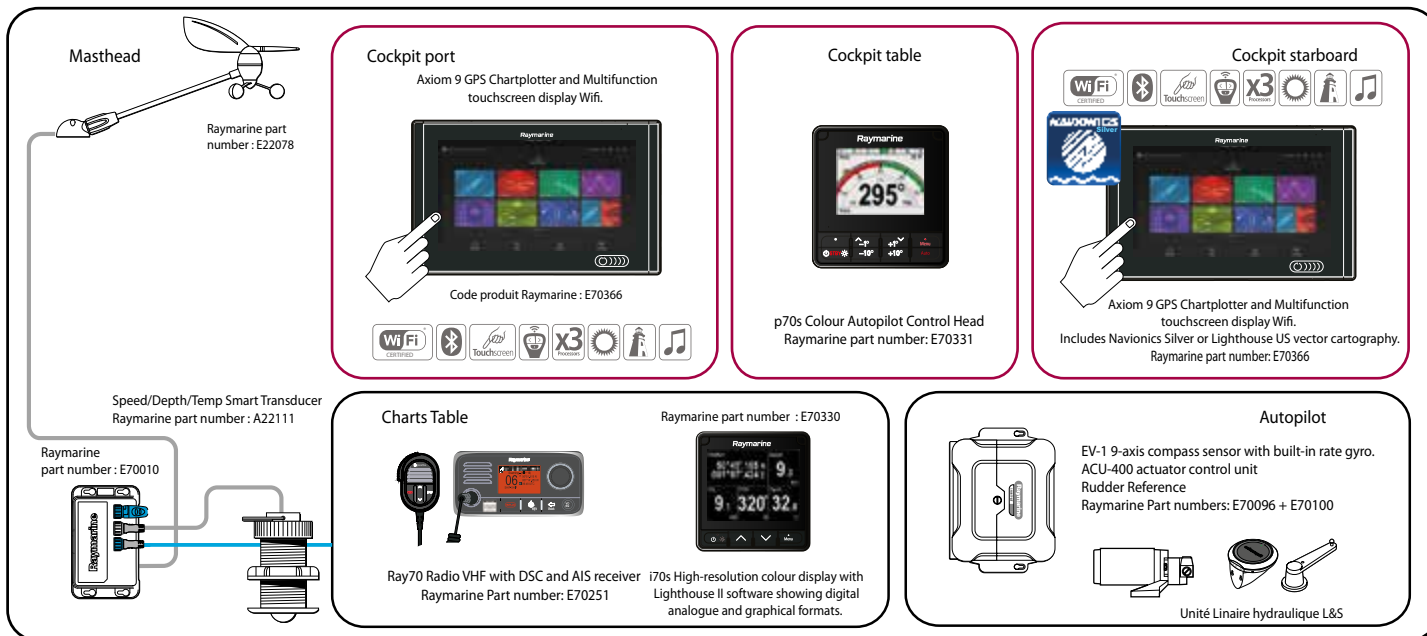
Sun Odyssey 41 DS	2
Sun Odyssey 44 DS	2

Jeanneau 51	3
Jeanneau 54	3

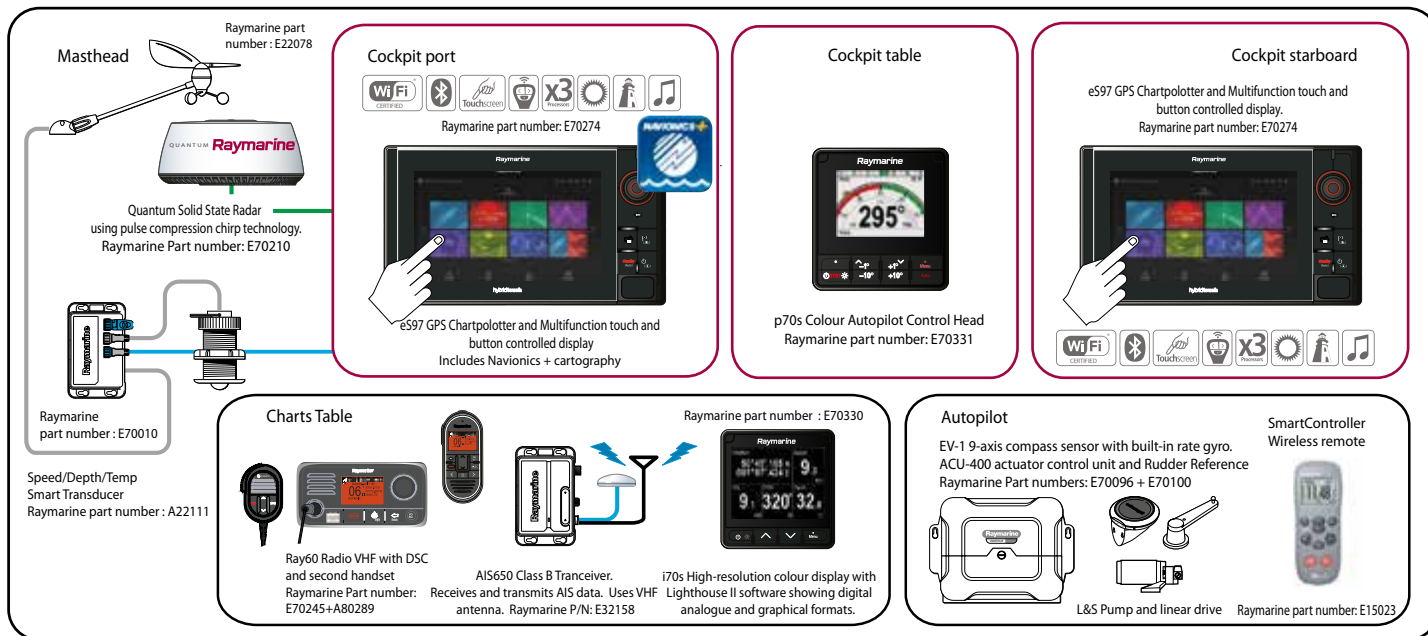
Sun Odyssey 440-490 Offshore Electronic Pack



Sun Odyssey 440-490 Offshore Electronic Pack



Sun Odyssey 440-490 Ocean Electronic Pack





Novembre 2017 - Document non contractuel